

Wilbrahams' Warbler

Autumn 2023



Great Wilbraham : Little Wilbraham : Six Mile Bottom



Cover Photo:

Little Wilbraham Church
from above.

Left: Our local MP Lucy
Frazer on the beat with the
Cambridgeshire
Constabulary (Page 62)

Below left:
Penny Smith (Page 4)

Bottom Left:
Warm Mornings at the
Wilbrahams Memorial Hall
(Page 55)

Below: Anglo Saxon
Cemetery Cruciform
(Page 8)



Contents

Page

Public Service Contact Details	2
Editorial	3
Letters	4
In Memoria	4
Little Wilbraham Anglo Saxon Cemetery	8
Bottisham Airfield Museum	9
St Nicholas Trust	10
Speeding	11
Hockey Gold	14
Cricket	14
Poem	15
On the Farm	15
Fulbourn WI	16
Library	17
Hole in The Wall	18
Parish Assistant	21
Bottisham Medical Practice	23
CCTV	24
Dementia	25
Fireworks	26
River Protection Society	29
Wilbrahams Environment Group	31
Community Choir	37
Untold Stories	38
Memorial Hall	41
Over 60s	43
Great Wilbraham PC	44
Flower and Vegetable Show	46
Johnson Bede Lane Trust	49
Parst Present Future	50
Photo Competition	52
Social Club	55
Well-brahams	57
Wilbrahams Refugee Society	59
CPRE	61
Lucy Frazer MP	62
Claire Daunton, County Councillor	64

Public Service Contact Details

Emergency	Police, Fire or Ambulance 999
Community Support Officer	PCSO Julie Hajredini 101 ext. 7113441
The Surgery, Bottisham Mon-Fri: 08:30 am to 6.00 pm	Enquiries/Appointments : 810030
Fulbourn Health Centre Mon-Fri: 08:30 am to 6.00 pm	Enquiries/Appointments : 880216
Out-of-hours / Urgent Care Cambridgeshire	NHS Direct 111
Anglican Church	Rev Alice Goodman 880337 Lay Minister: Steve Mashford, 882163
Baptist Church www.re-new.me.uk info@re-new.me.uk	Peter Wells, 812388, pandawells@cheerful.com Rev Keith Morrison, 813055 Rev Alan Brand, 812558

Great Wilbraham Parish Council

Chairman	Hilary Burton chairGW@wilbrahams.co.uk
Clerk	Samantha Chambers-Turner 07369 248998 clerkGW@wilbrahams.co.uk

Little Wilbraham & Six Mile Bottom Parish Council

Chairman	Dave Humphrey 07775 764 988 chairLW@wilbrahams.co.uk
Clerk	Hayley Livermore 07725080631 clerkLW@wilbrahams.co.uk

County Councillor	Claire Daunton 07905473395 Claire.Daunton@cambridgeshire.gov.uk
District Councillors	Carla Hofman 01954713000 Cllr.hofman@scambs.gov.uk Graham Cone 07595361285 cllr.cone@scambs.gov.uk John Williams 01223 880940 john.williams@cambridgeshire.gov.uk
MP Lucy Frazer	lucy.frazer.mp@parliament.uk

Photos by Chris Fell, Martin Gienke & contributors

Editorial

Welcome to the Autumn edition of the warbler. There is definitely an autumnal feel to this edition as David White talks about the weather conditions an getting the harvest in and the Memorial Hall Committee are busy arranging the Wilbrahams Harvest Feast to take place on Saturday 7th October. The Hole in the Wall has been nominated for an award and it could be down to you if they win it. Read more later in this edition

We pay our respects to two pillars of the community, Penelope Susan Smith and Peter Ramus

There is also an article on Little Wilbrahams Anglo Saxon Cemetery which was excavated in 1851 by RC Neville of Audley End

Sally Tippen, Great Wilbraham resident helped England to glory at the European Masters. She was captain of the England over 70s (O70s) women's hockey team, the first-ever National team at this age group.

Roddy Tippen comments on how tough the cricket season has been so far. No doubt some of you will watched our boys fight for survival in the two remaining home matches whilst keeping an eye on the scoreboard, recently dedicated to the memory of the cricket clubs much-loved President, Chris Ascroft

Untold Stories is about the Dhaliwals Sam and Nindy who originally came to Great Wilbraham in 2008 but in 2011 they went to Dubai retuning in 2013, Sam helped to start the Transport Working Group (TWG), and joined the parish council, where he got funding for super-fast fibre-optic broadband.

There is also article from our MP Lucy Frazer and local councillor Claire Daunton. Lucy is on the case regarding drivers having voted against the congestion charge for Cambridge as well as reporting well over thirty pot holes and making sure the local bus service runs for the next year. Claire talks about yellow lines and the success of the buffer zones and Motor Vehicle Activated Signs (MVAS) installed in Great Wilbraham and the fact that there is still a need for better public facilities and transport for all, to sustain the kind of communities in which all can feel welcome and can thrive.

The Wilbrahams' Refugee support group in their article say they will continue to look for housing for Ukrainian families but this is increasingly more difficult because of the rural location and poor public transport serving the villages

We have the parish council reports as well as several up and coming events in the villages. Not least of all is the little Wilbraham parish council are hoping to put on a Guy Fawkes night fireworks display following the of the summer feast and then as already mentioned there is the Great Wilbraham Harvest Feast.

Please continue to send us your articles letters and pictures.

John Torode

Letters

Dear Editor,

I would like to thank all our village friends who supported us when my wife Penny passed away on April 18th.

My daughter Stephanie and I received so many cards, flowers and letters of support that helped strengthen us. We greatly appreciated the visits, invites, cups of tea and cakes... We have been shown so much kindness and care.

We appreciated the turnout for the service in the Church, which was almost filled to capacity, and Rev. Alice delivered the most beautiful service. We thank Lorna, Helen, Jenny, Kathy, Mary and Rosie for the lovely flowers in the Church and The Village Hall. Thank you to Tony Goryn for organising the sound system in the Church. We appreciated having Mary playing the organ with the Community choir leading the singing.

So many helped us set up the Village Hall for the refreshments after the service. Too many to list, but we greatly appreciate your assistance. Chris Fell produced a brilliant slide show on the large screen in the hall, bringing back many happy memories of Penny.

So, a big thank you to everyone for making the day of the service a celebration of Penny's life.

And thank you to all who jointly donated over £1000 to Penny's favourite charities.

Thank you for everything you have done and continue to do to help us through this difficult time.

Mike Smith and Stephanie Fairbank

In Memoriam Penelope Susan Smith, 23 October 1946 – 18 April 2023

Penny was born and grew up at Ditton Fields in Cambridge, much loved by her parents, Ivy and George Philpott and her older brother, Keith.

She married Mike Smith when she was 18 and he was 21, and they had a wonderful marriage for almost 59 years, both wanting to enjoy life and make the most of it. Their daughter Stephanie was born when Penny was 21.

They rented a tiny cottage in Fen Ditton, bought their first house in Burwell, moved to Waterbeach and then to their home for life in Bensteads End, 45 years ago.

Penny had a real sense of adventure and she and Mike loved to travel. They had 20 years of retirement together and they travelled widely throughout their

marriage – to Australia, South Africa and the Far East many times, to New Zealand, both coasts of America and throughout Europe.

A firm favourite was their annual holiday to Sisteron in the French Alps where Mike would fly his glider. They went with a large group of friends and Penny loved this, with dinners all together in the evenings and trips to markets.



Penny often needed to retrieve Mike if he couldn't make it back to the airfield in his glider, hitching up the trailer, planning her route to him, long before the days of sat nav, and driving to the middle of nowhere, up and down very steep mountains and along narrow roads, towing a 9-metre-long trailer.

As part of this holiday, they would go wine tasting in the Rhone Valley for a few days. Penny became an expert on Rhone wine and could identify Rhone wines, to the village, and within a couple of years.

In recent years, they would visit Cornwall, where they had gone on holidays together as a family. They spent a very happy week there just before Penny passed. She loved Boscastle, Perranporth and Padstow, she was so happy there and it is wonderful that she made it one last time.

Penny did well at school, but she was eager to leave to train and work as a shorthand secretary. She achieved super-fast speeds at typing and shorthand. She worked at Pye, now Phillips, then for the NHS in the psychiatry department, at Fulbourn Hospital and then at Addenbrookes. She was a Medical Liaison Coordinator, working with the consultants arranging their clinics and making sure things ran efficiently and smoothly.

Mike often worked away in the week, so she juggled her job, the home and looking after Stephanie, helping to look after the ponies and horses they bought for Stephanie, and often towing the trailer and being groom for the day at competitions.

She was a brilliant seamstress, making curtains for the home and pretty dresses for Stephanie when she was young, and often matching ones for herself. And she was a cool young mum; Mike bought her a beautiful orange MGB GT, and Stephanie, her cousin Clare (Wilson from Little Wilbraham) and friends used to sit on the ledge seat in the back with their heads sticking out of the sunroof, laughing.

She created a calm, welcoming and spotless haven at home. And she was a knowledgeable and talented gardener, creating a wonderful garden at home and

at the home of Stephanie and her husband Nick. She knew which plants would grow in which spot and when: she was self-taught. Her roses won awards at the village show, including this year. She loved going to the Chelsea Flower Show every year, and the gardens at Anglesey Abbey and Hyde Hall as well as Kirstenbosch and the Harold Porter Gardens at Betty's Bay, both in South Africa, were firm favourites.

The word stoic epitomised Penny. There were health challenges in recent years, but she never talked about her illness, far preferring to hear about others. She never complained, and always had a smile and kind words for people. She was always so positive and optimistic.

She served on the Parish Council, and as part of this, she was Tree Warden, a role she really enjoyed. She was one of four people who worked on a team to create the new cemetery for the village, which is where she is buried. She loved this project and was proud of it, and it is fitting that she rests there.

She was a devoted and loyal wife, a kind and caring mother and a true and dear friend. She had a zest for life and a brave soul. She is much loved and very much missed by many. She is at the centre of many, many happy memories and she is remembered with much love.

Mike Smith and Stephanie Fairbank.

In Memoriam for Peter Ramus:

Peter lived in Great Wilbraham for over 38 years and had been very involved in the village, in particular, Wilbraham Sports Club. A few years after moving into the village, Peter became Treasurer of the Sports Club, and he stayed in that role for ten years, continuing to support the Sports and Social Club since then keenly.

Cricket was where Peter concentrated his own sporting efforts, with his enthusiasm making up for what he lacked in skill! Tony Goryn recalls that early in the 1990s, his foresight and lateral thinking came to the rescue when we were struggling to raise enough players to field two Saturday cricket teams. At the Annual General Meeting the thrust of the conversation was to cut down to one team. Until Peter piped up - "Let's start a Sunday side too". Totally counter to logic. But he persuaded everyone present, and it worked. New players provided an extra pool from which to draw the Saturday sides. Peter captained the Sunday side and the Wilbrahams' sporting world, and the opposition, watched and waited in wonder. It was a great success.

Peter's next project with the sports club was establishing Youth Cricket here, not only making his three children attend, but also a significant number of children from the Wilbrahams and neighbouring villages who would fill the recreation ground on a Saturday morning. With so much keen interest, Peter was part of

the team comprised of Tony, Roddy and many others. The England and Wales Cricket Board were establishing a countrywide scheme to attract more children into cricket. Each County was assigned a professional Cricket Development



Officer. Peter was one of the first players in Cambridgeshire County to take and pass a Level One coaching course to qualify him to coach children. Wilbraham entered under-15, under-13 and under-11 teams into organised evening leagues. In some seasons we also had a Sunday Transition team (requiring 6 under 15-year-old players). That added up to 4 youth teams as well as the adult teams. Peter also took youth teams to other games and competitions on Sundays and coached in some local schools. It was serious stuff in a recreational way.

Another big event of the year for Wilbraham and for Peter was Sports Day on the

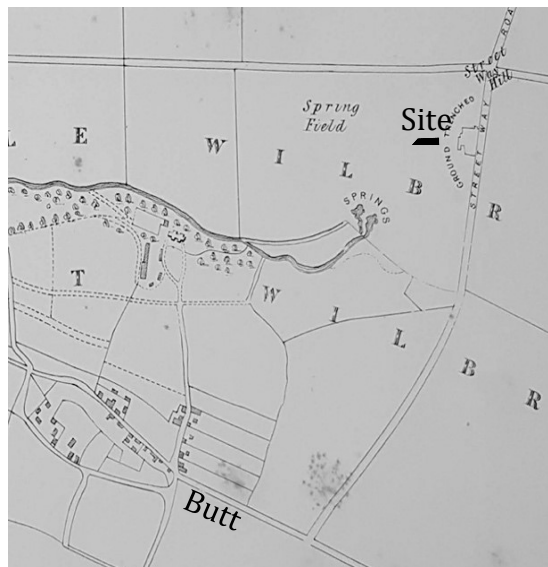
recreation ground. They would raise £500 or more. Peter would be on duty at the preordained morning meeting time to mark out the tram lines for the children's races. Then, when the races took place, he was always available to act as a judge. At the end of the day, in his role as Treasurer he would organise all the funds raised, which would help balance the books for the rest of the year.

Peter loved living in Great Wilbraham and could often be seen out walking with one or two of our golden retrievers.

As a Family, we would like to thank everyone who has been a part of Peter's life in this village over the last 38 years and for all the kind words of condolences, flowers, cards etc. we have received since his passing. These are very much appreciated.

Sally, Ben, Milly, Gus, and Boe.

Little Wilbraham Anglo-Saxon Cemetery.



If you walk up Butt Lane, turning left at the top to go towards the Six Mile Bottom Road, you will pass a small scrubby piece of woodland on your left as you walk up the hill. This used to be a chalk pit and it led to the discovery of a very rich cemetery, dating from the 5th C to the 7th C AD.

It had been known about for some time before its excavation in 1851 by R.C Neville, of Audley End House. He published his findings in 'Saxon Obsequies' the following year, which detailed the contents of the graves and burial urns found.

It was illustrated with spectacular-coloured engravings and a copy can be seen in The Cambridgeshire Collection at the Central Library in Cambridge.

It had been a robbed site, but Neville found 188 skeletons of which only 24 could be identified as female and 8 children. Although disturbed, more than 100 urns were found. But the grave goods were exceptional: 118 brooches, some gilded, over 1000 beads made from clay, glass, crystal, jet and amber, bronze wrist clasps, tweezers, bone combs and two bronze-framed buckets.

Amongst the male graves, shield bosses, knives, spearheads and a complete horse were found. But, again, exceptionally, four swords, three of which had giant glass beads as part of the handle or scabbard. These finds alone make Little Wilbraham amongst the most important site of its period. The cemetery was being used at a time when Fleam Dyke was being finalised and the Wilbrahams were on the boundary of two great Anglo-Saxon kingdoms. It had been an important Royal Manor, and the Roman building found nearby, combined with the springs of the Little



Wilbraham River, made it an important settlement that had developed within 100 years of the Romans leaving the country.

The Anglo-Saxon population was probably more the result of a cultural than a demographic change; the final Romano-British kings hired North European mercenaries to shore up their territories who stayed after being offered land. The cemetery contained 32 Roman coins, pierced for suspension.

I often wonder about what happened to the various bones and grave goods that were dug out from the chalk pit before proper excavation. The site must have been known about for hundreds of years, as the ridge had been chosen as the site of burial mounds, being on the visible skyline from the probable site of the Anglo-Saxon village in the grounds of the Temple and next to an important routeway, the Icknield Way.

Cambridge Museum of Anthropology and Archaeology in Downing Street have a selection of objects from the site on display, and you can see about 700 objects on their website. Just look for 'Object Search' and type in the title of this article.

Richard Bray

Bottisham Airfield Museum

The museum is on Wilbraham Road, Bottisham, at the junction of the A1303. Opening times are 10.30 am till 4.00 pm Sundays and Wednesdays, Easter to November. Admission is £5 for adults and free for children under 16.

We have displays featuring the RAF, USAAF and the Home Guard, and we have an Aircraft simulator for anyone who wants a go at flying included in the price.

Outside is our P51D Mustang in the colours of Colonel Thomas Christian who was the Commanding Officer of the 361st fighter group USAAF, based at Bottisham during 1944.

The airplane is outside during the summer and is wheeled into its hanger in poor weather, although it can still be viewed – just ask a member of the team. After your tour of the museum, you may wish to relax in the Flying Tractor Cafe where you will find hot and cold drinks and snacks.

There's also a shop packed with models, books, clothing, and memorabilia. All money goes into the museum to help with the upkeep, as we are a



volunteer charity. So, if you are passing, please call in. You can just use the cafe without entering the museum if you'd like.

If you know anyone interested in helping to run the cafe or who wants to join our team, please call 01223 813952 and leave a message. We'll get back to you as soon as possible.

On Sunday, October 29th, we have an additional attraction of reenactors giving weapon demonstrations and tours of our wartime bunker.

Sunday, November 12th is our last opening day and there's a Remembrance Ceremony from 10.30 am.

Our final event this year will be a Christmas Fair in early December; the date is to be confirmed, so please check our website for details at www.Bottishamairfieldmuseum.org.uk, where you will find more information about the museum and our events.

Charles Cook Museum Volunteer.

St Nicholas Trust

The balance of The Legacy Capital Fund at the end of July was £227,441 (compared to £233,637 as at end of April); so a slight reduction of 2.56%, which has been in line with general market sentiment (the FTSE All Share went down by 1.94% over the same period). Meanwhile, the trustees continue to carefully invest in stocks & shares to build up dividend income at a rate now targeted to exceed £10,000 pa.

Graham Clarke

Private Tutoring Service by Mrs Nindy Dhaliwal

Outstanding teacher with over 20 years' experience

Offering tutoring for ages 4-13 years

Confidence building in Math Reading and Creative Writing

Support in all subjects helping with self-esteem and filling in gaps

Specializing in in 7 plus and 11 plus private school entrance exams

LAMDA Teacher

For home tutoring sessions to support your child to do the very best

Please contact

Email nindydhaliwal@gmail.com or 07979692019

Speeding into Great Wilbraham

Many residents of Great Wilbraham will have seen the Mobile Vehicle Activated Sign (MVAS) units flashing speeds of passing vehicles which have been mounted at the entrances to the village. The County Council installed posts for the MVAS units as part of the village's successful LHI (Local Highways Improvement) application last year, and a team of volunteers from the Transport Working Group (TWG) immediately erected an MVAS unit on each of them. At the time of writing, 6 August, the units mounted on the posts have been in place for 2 weeks and preliminary results have been collected. There are few surprises, but there are some nasty shocks.



Mill Road: The MVAS unit is mounted in the 40mph buffer zone in sight of the bend ahead, see photo. Despite its proximity to houses on that bend, the MVAS showed that nearly 2 vehicles in 5 are exceeding the speed limit. Incredibly, 18 vehicles were travelling at 70mph or faster, one at 83mph. The Police are interested in the so-called V85 figure, the maximum speed at which 85% of vehicles are driving (so 15% of vehicles are travelling faster). On Mill Road the V85 figure is

47mph, and the Police are being advised.

Station Road: This unit is also mounted in a 40mph buffer zone. It is some relief to find that just 3% of vehicles were exceeding the speed limit, although disappointing that several of those were travelling at above 50mph.

The Lanes: Because of bends in the road, the MVAS unit is mounted in the 30mph zone. The data show that one vehicle in five is exceeding the 30mph limit there and that one of those was travelling at over 60mph. That is dangerous on any stretch of The Lanes but is of particular concern given how close to the school the unit is mounted.

The MVAS units are not there just to provide data. One of their purposes is to slow traffic, not only vehicles entering Great Wilbraham but also within the village. When the MVAS units were mounted on Church Street and High Street they proved to be very effective for this purpose. An important part of the speed reduction program will therefore be to rotate the MVAS units between different locations.

The MVAS units confirm the data from TWG's earlier manned surveys that an average of 2500 vehicles come through Great Wilbraham village every day.

If any reader has questions or observations, they can contact TWG at hgvs.wilbraham@gmail.com.

David Richer. Chair – Transport Working Group (TWG)



Welcome to Home Close – where exceptional care sets us apart

Our friendly team truly care for your family like they would their own – providing compassion, respect, and dignity.

With a deep commitment to meeting residents' individual needs, whether it's residential, nursing, or dementia care, Home Close is your perfect choice.



Home Close Care Home, Cow Lane, Fulbourn, Cambridgeshire, CB21 5HB

For a friendly chat with
one of our advisors

Call 01223 827937

www.healthcarehomes.co.uk



Committed, compassionate, caring



Are You Paying Too Much For Your Medical Insurance?

Independent And FREE Advice

- **Switch to an alternative scheme** – If you are currently insured, switching to a competitor can mean *substantially lower rates*
- **Pre-existing conditions covered** – It is often possible to include pre-existing medical conditions currently covered by your existing provider
- **Improve your coverage** – We can frequently improve your cover whilst also lowering the cost of your premium
- **Complexities of different schemes** – In many cases, people are over insured – we can ensure you are covered with a scheme that meets your individual needs and requirements
- **Full cover for cancer treatment** – Many policies do not cover cancer in full – we are able to advise on your current level of coverage



For further information, please call Simon Lively at
M&L Healthcare Solutions -

FREEPHONE 0800 145 5838 or 07710 993990

Email: simon.lively@mlhs.co.uk

quoting ref: Wilbraham

M&L Healthcare Solutions Ltd is authorised and regulated by the Financial Conduct Authority. (FCA Reference number 943748)

Hockey Gold



Great Wilbraham resident, Sally Tippen, helped England to more glory at the European Masters. She was captain of the England over 70s (O70s) women's hockey team, the first-ever National team at this age group. Sally explained, "We won all our matches against O65 and O70 teams to win our Pool and receive some special commemorative gold medals in the name of Jacky Murray, who sadly passed away earlier this year. Unfortunately, we did not get the opportunity to play any other National teams, but we did beat Scotland O65 and drew with Wales O65 in our Home Nations tournament earlier in the year. We hope to play some other O70s National teams next year at the World Masters in Auckland."

Cricket in Senior One

In stark contrast to last year's hot and dry summer, we have already lost five matches to the weather this season, and, sadly, had to concede one through a lack of players. Of those matches played so far, we have won 3 and lost 5. We currently sit in the second of two relegation spots, but points-wise, it is tight, and with four matches left (at the time of writing) we could well still survive in Senior One. Let's be honest, it was always going to be trickier playing in the top local cricket league against clubs the size of Royston, Ely and Wisbech.

After rain robbed us of the first two matches, it all started so well, with us winning three of the next four. A three-wicket win at home over Fulbourn (Joel Gawthrop 4 for 36 and 44 runs) was a cracking start, followed by a close four run win over Horseheath (Toby Tippen 79, Tom Sweeney 58). Both these matches were played in glorious sunshine in front of a large Wilbrahams crowd. Cricket heaven! Sadly, despite 58 not out from Sam Coe, Fulbourn got their revenge with a nine wicket win at their place, but we beat Abington comprehensively by 71 runs the following week, largely down to a magnificent 87 from Ross Craig.

Then came the slump. After the concession to Bluntisham, we at least put up a decent fight against Royston (Captain Charlie Moore 61), eventually losing by five wickets. Losses against Bluntisham, Horseheath and Ely (2nds) by ten wickets, six wickets and eight wickets, respectively, were less impressive. In all three matches, we batted first and failed to get enough runs. In contrast to last season, when runs were flowing like I had never seen before, the wickets this year have inevitably been softer, generally variable and more bowler friendly.

The bowling at this level is also markedly better, so to be fair to our batsmen, the challenge has definitely increased.

Three of our remaining four matches are at home, so you will be able to watch our boys fight for survival in glorious sunshine whilst keeping an eye on the scoreboard, recently dedicated to the memory of our much loved President, Chris Ascroft.

Roddy Tippen. Chairman, Wilbrahams Sports Club

Who is that man?

Who is that man, outside the chalk?

He used to play, back in the day

but can now just talk

But his mind is bright

He knows what's right

But he can only say, he cannot play.

In his day he'd made some runs

and scored some goals.

But now he dreams of days gone by

and wonders why,

he cannot run, it's passed him by.

And if he says,

do they listen to what he has to say?

Like he didn't, back in the day

His eyes have dimmed

His biceps thinned

His fingers creak

His bones are weak

On the Farm

Harvest happened, as it always did and always will. Following a hot dry June with only 19mm of rain recorded and 12 days when the temperature was over 25° July followed as a dull wet month with 77mm of recorded rain and only two days warmer than 25°! Much less rain here in July than in other parts of the country, but still disappointing when many were trying to cut early crops. After 2 very easy harvests, this one seemed to start as a salvage operation, and after harvest 2022 had finished for many. Extreme variance in the weather now seems the norm. A couple of mechanical issues with my combine harvester also meant we lost a couple of the rare fine harvesting days, but it now seems to be working well.

Leading up to harvest on July 5th we had a farm walk here for around 50 people. This consisted of some videos and presentations in the barn to help explain what would be seen on the tour of the crops on the walk. The afternoon was

supported by Wildfarmed <https://www.instagram.com/wildfarmed/> for whom I'm growing some wheat, Karen Dury Peppercorn (of farmers market fame) who had baked loaves from Wildfarmed flour and who sold every one and Rachel Vollerthun, a community artist from Swavesey who provided some artwork to dress up the barn and displayed a much larger exhibition in the old water mill building here. Everyone seemed positive about the afternoon's events, so I may repeat this again next year. Today, Aug 11th, the Wildfarmed (no pesticides) wheat was harvested and appears to have produced a reasonable yield. It was cut dry, so should store safely until it leaves the farm to be milled for loaves available in M&S.

The early cut fields here have had a pass with a light disc machine which mixes in the chopped cereal crop straw to aid its decomposition and, at the same time, broadcasts cover crop (green manure) seeds which have germinated well. The seed mix consisted of 6 plant species, so I'm hoping for some colourful looking fields later this autumn.

David White

Fulbourn WI

At the beginning of July, some of us went for an outing in the Suffolk area. This was firstly a mystery tour around the countryside and was also a mystery for Barry our driver, as two of us found it by chance when his wife Christine took a minibus load of us to an exhibition in the Woodbridge area last year! Our members called this place 'a little gem,' and this is where I get to have "bragging rights". Here you had heavy rain for most of the day, but not Fulbourn WI! We were able to sit outside the coffee shop, whilst inside, there was a great choice to eat and drink in the converted barn. (I enjoyed something called "Iced London Fog"). In the next barn was the craft centre where, would you believe it, we found items for sale by Helen Clarke of Gt Wilbraham and in a third barn was a Farm Shop.

We then moved on to Felixstowe for the afternoon. Although it was cloudy, the sun soon came out for most of the time and one of our members even went for a paddle in the sea! We certainly know how to live the high life. Just as Barry shut the coach door to start our journey home, it started to rain so we considered ourselves very lucky.

We had a great time a couple of weeks later when Alison Giles came to give us an amusing talk about the history of Molly Dancing. As you can see from the photo she was assisted by WI "volunteers" who quickly learnt how to "Molly





Dance" while she accompanied them on her recorder (Alison is the one with the green face). On Wednesday Sept 20th Kevin Bardman is coming to give us a talk about "Women on the Oregon Trail."

Wednesday October 18th will be a talk by Susan Grossy about "Going it Alone" about writing, publishing and selling your own book.

Whilst on Wednesday November 15th, Marion Leeper will be telling us the story of Winnie Cobb, the first lady taxi driver in Cambridge.

All meetings start at 2pm at the Swifts in Haggis Gap, Fulbourn, hope to see you there.

Marilyn Moyse President Fulbourn WI

Bottisham Carpet Bowls Club

At Bottisham Village College in the Henry Morris Lecture Room. Entry via main Reception Term times only

Club Night Wednesday 7.15pm, League matches Thursdays. First meeting Wednesday 6th September 2023. New members 13th September 2023 (4 weeks free trial)

Carpet bowls is suitable for all ages and all equipment is provided by the club.

We are a friendly group and new members are always welcome, so please come along and try your hand. If interested please contact us for further details:

Nora Watson 01223 812121 (email:-nora@gandnwatson.uk)

Richard Nichols 01223 812158 (email:-rlla.bell@btinternet.com)

The Library Presents



The Library Presents is back for a jam-packed autumn season of arts activities in libraries across the county. As

always, there are performances and workshops to suit all ages, with music, theatre, dance, magic, puppetry and even some film. The season starts on 1st October 2023 with a reduced version of Macbeth, 'the Scottish

Play', and runs through to mid-December, with arts and crafts workshops and many more performances. There is a theme of horror, murder and chills, with Dr Jekyll & Mr Hyde, murder mystery and sinister silent film; but the season also has a lighter side, with fairytales, magic and balloons. Altogether there is a glorious mix of uplifting, enchanting and playful treats for the autumn months ahead.

Tickets will be available from early September

For ticket information, please follow the online links at: [Library Live](#) | [The Library Presents](#)

Telephone: 01353 616991

In person at Participating Libraries (cash only)

On the door at all activities (subject to availability/cash only)

By Exchanging Digital Time Credits

Hole in the Wall shortlisted for Award



The Hole in the Wall in Little Wilbraham has been shortlisted for the Good Food Awards. They're asking people to show appreciation for their culinary delights by voting for them at goodfoodaward.com/vote. You can help them to bring this award home together!

#goodfoodawards #VoteForUs # The Hole in the Wall Little Wilbraham

The website for the award says The official Good Food Award celebrates and acknowledges culinary excellence across the United Kingdom. Established in 2002, they have earned a reputation as a respected authority in the food industry. They aim to promote and bolster local, independent businesses

that create delectable food and firmly believe that these businesses are the backbone of our communities. They are deserving of recognition for their hard work and unwavering dedication

Deadline for the Winter Issue Friday 10th November 2023

Email contributions or adverts to;

martin@gienke.c.uk

johnboy_torode@hotmail.com

carolinebird17@gmail.com

Hand-written or typed contributions can be handed in or posted to the editors.



Free House

2 High St, Little Wilbraham
Cambridge CB21 5JY
Tel: 01223 848 616

If you're looking for delicious, hearty, gastro pub food served in a traditional rustic setting, then you've come to the right place.

Our little country pub, situated in the picturesque parish of Little Wilbraham, Cambridge has been serving famished farmers and thirsty villagers since the 16th century.

If you are hoping to throw an event or a country wedding, our beautiful country pub is the perfect location for you to make it a special one, the perfect setting for every event.



You're in the
top 10% of
restaurants
worldwide.

You've won an award for:
The Hole in the Wall

Introducing Pizza Night

Every Monday Serving 5pm-8.30pm

Starting From
£11.00

Margherita

Goat Cheese, Olives & Rocket

Chilli, Chorizo & Chicken

Bacon, Blue Cheese & Basil

BBQ Pulled Pork & Roasted Red Pepper

Monday Happy Hour!!!

Enjoy your drinks with 20% off from 5pm-7pm.

For more details call

01223 848616

www.holeinthewalldining.co.uk

Tutor



Experienced tutor:
Fully qualified former primary school teacher and home educator based in Little Wilbraham

Expertise in:

Primary

Key Stage 3: Maths, English,

History & Geography

Study skills & revision techniques

For information and to arrange a free meeting/consultation contact:

Anne-Marie McCubbin BA(Hons) PGCE
email:

info@wingstoflyeducation.co.uk

tel: 01223 811939

NEED A NEW FENCE?

Reliable local

company.

Established 2007.

Over 3000 local

installations.

Choice of colours &
sizes.

NEVER PAINT A FENCE AGAIN.

Withstands gusts up to **130mph**.

Fitted with a **25-year guarantee**.

Numerous local installations & testimonials available.

For a **FREE no obligation**, site survey and quote:

Call us now on **01223 811160**



www.colourfencecambs.co.uk

Rothwell's Carpet Cleaning

Carpet Cleaning & Stone Floor, Upholstery, Rugs

A few points that make us stand out,

Rothwell's has been in business since
1993

We're an honest local family firm.

Our large truck mounted machines
mean more cleaning & drying power
for the best results possible.

Members of both the NCCA and TACCA.

We will move the furniture.

100% satisfaction or it's FREE.

*Call Oliver and Max Campbell for expert
help today.*

01223 832 928

www.Rothwells.biz



Mindful movement to develop strength and flexibility

Small friendly classes restart on 5th September

Great Wilbraham Memorial Hall

Pilates: Tuesdays 9.30am Wednesdays 6pm

New Strength and Balance: Tuesdays 11am

The Fulbourn Centre Meeting Room

Pilates: Saturdays 9am

£10 drop in

£160 for the full course paid in advance

Find me on Facebook: **Emma's Pilates**

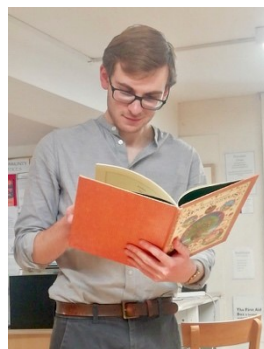
emmagent8@gmail.com

07812766864

Parish Assistant

Hello and Thank You!

Hello! I'm Ben Davidson, and for the last year, I've been the pastoral assistant to Fulbourn and the Wilbrahams' parish churches. I've worked alongside Revd Alice Goodman planning and running aspects of worship, children's ministry and church life in St Nicholas' and St John's, and perhaps am best known at Great Wilbraham Primary School. If we've not met, you may have seen me cycling up and down Station Road and through the villages. Perhaps my bicycle was freighted with a large orange pannier containing all manner of knickknacks for



communicating Bible stories in school assemblies, or perhaps I was on my way to lead the weekly 'Happy Sad Club' where children are invited to share what's happening in their lives, reflect on their feelings, and, if they want, to pray; or perhaps I was racing to get to my Bible or Art study groups.

I live in Cambridge, and it can be quite a cycle though it's a commute I've come to enjoy. I won't be making it so frequently in future: my year as pastoral assistant is coming to an end, and I am returning to Cambridge University from whence I came (off to study for a doctorate in seventeenth-century philosophy of religion, if anyone wants to know). But I've enjoyed my work in the Wilbrahams even more than the cycle – and not just because it's never either drenching wet or blazing hot inside your churches. Having grown up in fairly rural North Wales I prefer village communities, and the Wilbrahams are lovely: comfortably small, ancient but still lively. It's been a privilege to get to know the place and have a small ministry here. I've found great gifts of hospitality, generosity and warmth among Wilbrahamites (not to mention a fine bit of cake!). I've been able to come in from the outside and feel at home in a community. That's something I've always found less easy to feel in Cambridge, and it's a blessing.

It feels strange to introduce myself at this point, even if to say thank you. But while I look back with gratitude, I'm also looking forward to the year to come. I intend to maintain a relationship with the Wilbrahams' parish churches and with the school, where I'm set to join the governors in the next academic year. So, you may yet see me around, up and down, here and there, on my bicycle.

And, on the subject of gratitude, the village and the church, our next major festival when the summer's done will be harvest. The Wilbrahams and Six Mile Bottom Harvest Songs of Praise will be on Sunday 3rd October, at 3:30 pm. It'll be followed by refreshments, with a collection for the work of the church in Little Wilbraham. I hope to celebrate with you there!

Ben Davidson

THERE'S SO MUCH MORE IN YOUR LOCAL COUNTRY STORE...



Of course we sell tractors and chainsaws and
lawnmowers and safetywear and garden machinery
and all sorts of agricultural equipment...

*But did you know you can also buy clothing,
footwear, and gifts of all kinds*

Willbraham Road,
Fulbourn CB21 5EX
Tel: 01223 880676
ernestdoeshop.com



 **ernest|DOE**

Bottisham Medical Practice

Patients' Participation Group

Flu Vaccinations:

These will be held on the mornings of 23 and 30 September. Patients eligible for these will be invited to attend. Please wait for the invitation. Details will be on the website.

Training:

The surgery will be closed on the afternoon of 19th September for staff training.

Survey Results:

These reveal that 88% of patients are satisfied with the Practice.

Missed Appointments:

Please cancel your appointment if you are not going to attend so that it can be allocated to another patient. In June 58 appointments were missed and 44 in July.

Online Access:

Patients can now contact the surgery for non-urgent queries during our opening hours using the 'Contact Us' link on our website. The practice team will respond within 2 working days. This can be used for: -

Admin Queries e.g. fit 'sick' notes, ask about recent tests, order a repeat prescription

Medical issues e.g. let us know about a new or ongoing symptom (non-urgent only)

Online advice e.g. advice and guidance on conditions, symptoms and treatments

For more urgent help telephone the practice. If the practice is closed call 111, or in an emergency call 999.

Donations:

Thank you to patients who have sent donations or left them in the red bucket. This will help provide items for the surgery.

"NAAFI Break"

The next meeting is on 6th September at Anglesey Abbey café at 10am.

So, what is NAAFI Break, where does it come from and what does it stand for? Well, firstly NAAFI break is basically a coffee morning for local veterans to meet up on the first Wednesday of every month where we meet in a safe place, "Anglesey Abbey Restaurant" and have a great giggle about nothing. We are

usually joined by our Social Prescriber who is able to provide non-medical support to the veteran and their family members.

NAAFI was established in 1920 by the British Government, combining the Expeditionary Force canteens and the Army and Navy canteen board to run the recreational establishments needed by the Armed Forces and to sell goods to service personnel and their families. We know it as Navy, Army Air Force Institute. When serving abroad the NAAFI can be a lifeline to families for both purchasing goods and having a safe environment for entertainment.

So, if you're a veteran please come along to our NAAFI Break and enjoy our family spirit.

The Patient Participation Group:

We are happy to have new members join the committee; all patients of this Practice are eligible. Please contact our chairman as below to find out more information and how you can be involved.

Regular Meetings:

The next meeting is due on Wednesday, September 27th, 2023, time to be decided. However, due to administration changes at the Practice, the meeting details may have to be changed. If you wish to join our Zoom meetings, please email our chairman, s.j.gilson@btinternet.com, who will send you details and a meeting invite.

Bottisham Medical Practice Patients Participation Group

CCTV in the Village

After a recent burglary incident, a group of villagers in Little Wilbraham approached the Parish Council about installing CCTV. The rationale for this derives from the fact that the van involved in the crime was identified at the time, by a member of the public and reported to the police, resulting in arrests.

As a council, we have not formed an opinion other than it is essential that we gauge public opinion with a potential village meeting. Prior to that, I would like to provide some initial observations for discussion and request feedback:

The only efficient place CCTV will work is at the entrance to the High St in Little Wilbraham due to it being a dead-end. It could monitor vehicles entering and exiting at the junction near the Hole in the Wall.

Consequently, it would be unfair for the PC to pay for this and so its funding would need to be by donation.

Where could cameras get placed at this junction, how would they look and what

impression would that give (good and bad) and finally, how could we power them?

Privacy is an essential part of any CCTV system. Rules would need to be in place regards access. In essence, someone needs to regularly check that the system is functioning and provide access to the police on request. No one else should have access.

Would this response be proportional to the actual events that have occurred in our village?

Please feel free to contact me with your thoughts.

David Humphrey LW&SMB Chairman ChairLW@wilbrahams.co.uk

Walking in your shoes, Mobile Therapy Service Dementia

The Dementia Respite Provision has been developed as it was evident that family carers are finding it difficult accessing respite and having the opportunity to have some downtime and recharge. Our highly skilled team have years of experience running community hubs and supporting vulnerable adults.

Evening and Weekend Respite

Evening, Weekend and Overnight Respite now complements our existing provision to enable carers to be able to pursue hobbies and interests that may be more difficult to access due to the needs of their family member with dementia. This provision will be person-centred and bespoke so that the carer can be assured their family member with dementia is well supported, cared for and will also have an enjoyable time.

Before any support is agreed a thorough Assessment of Need will be undertaken so that an in-depth Care Support Plan can be devised and agreed. During this assessment, if it is agreed that the person with dementia would prefer to stay in their own home during the day and evening, then the team will provide a variety of games and equipment that can be used in the person's home to engage and stimulate them. If, however, after the assessment, it is agreed the person with dementia would benefit from a local trip out e.g., a garden centre visit, local park etc... this too can be accommodated.

Overnight Respite

Overnight Respite is also available following an in-depth assessment, this will enable the carer the opportunity to be away from home overnight, safe in the knowledge that their family member is safe and secure in their own home.

Phone Mike on 07884042590 or email: walkinginyourshoesmts@gmail.com

Mike Donoghue

Fireworks

Little Wilbraham and Six Mile Bottom Parish Council would like to organise a Fireworks and Beacon lighting event for Guy Fawkes Night on Sunday, November 5th.

As a local event, it will be held on Little Wilbraham's recreation ground, reducing the carbon footprint of travelling to fireworks shows further afield. It will also provide an alternative to individuals hosting their own garden events, minimising the disruption to local animals. Most importantly, after the success of The Feast, it will get our lovely villagers together again!

In order to fund this event, we need to sell tickets in advance at £5 per adult (kids go free). In the unlikely event that we don't sell sufficient tickets by October and need to cancel, we will issue refunds.

You can also sponsor a firework to make the evening that bit more special

In addition to a spectacular display of fireworks, refreshments will be on offer from a stall run by the Friends of Little Wilbraham church.

Tickets are available via Great Wilbraham Social Club or through the Little Wilbraham and Six Mile Bottom PC checkout square site portal, using the QR code below failing that please contact Dave Humphrey,

ChairLW@Wilbrahams.co.uk



Wilbrahams Memorial Hall

Monthly Farmers' Markets

**Held on the second
Saturday of the month.**

from 9.30-11.30 am



**Next Market Saturday 9th
September 2023**

**FULLY TRAINED, INSURED
AND DBS CHECKED
CAT SITTERS**



In-home cat sitting based
on your cat's individual needs, giving
your feline companion safety, comfort and
familiarity in their own surroundings.

www.thefulbourncatsittingcompany.co.uk

  [@thefulbourncatsittingcompany](https://www.facebook.com/thefulbourncatsittingcompany)

info@thefulbourncatsittingcompany.co.uk

SCR



Recovery Transport

& Scrap vehicle Collection

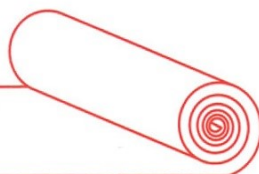
:01638 810 044 :07761 010 085

Fast friendly service

London road, six mile Bottom

PETER FISHER

CARPETS - WOODS - VINYL



A wide range of floorings supplied and fitted.
Please call for a free estimate and select in your home.

Tel: (Bottisham) **01223 811321**

Mobile: **07879 494 685**

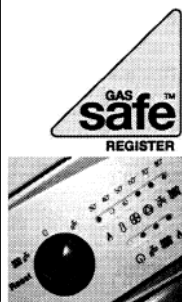
Great service for
30 years

Wilbraham Boiler Services

Plumbing and Heating
Gas and Oil Servicing and Breakdown
Boiler Replacements – Landlord Certificates
General Plumber and Heating
30 years experience – No jobs too Small

Mark Taylor

Call Now : 01223 812024 or 07906 691726



GOOD TECHNOLOGY

355 Newmarket Road
Cambridge CB5 8JG
Tel: 01223 315076
sales@good-technology.co.uk
www.good-technology.co.uk

MULTI FUNCTION PRINTERS / COPIERS / SCANNERS
FOR BUSINESS Tel: 01223 315076

Wilbraham River Protection Society

The mild, wet weather over the summer encouraged the growth of vegetation in the river, with reeds and rushes proliferating. It also provided a challenge clearing the footpath alongside the river from Hawk Mill to Quay roundabout for the annual walk on July 16th.

On the day the weather was warm, and David Lomas gave a series of interesting talks on the history of the river to the new and die-hard members of the society who joined us. Tea afterwards was magnificent, and many thanks to those who organised it in the old water mill room recently renovated at Hawk Mill. A big thank you to David White for hosting us.

We have recently reached our one-hundredth member of the society, with many people joining via the website link. <https://www.thewrps.org>. The more members we have, the more pressure we are able to exert on the issues of water management in the Cambridge area as well as preserving our industrial heritage and natural places.

The AGM will be held on Tuesday, November 28th, at the Wilbrahams' Memorial Hall. Please note the new date. The AGM will start at 7.30 pm and finish at 8 pm there will be a short break for drinks, and at 8.15 pm we are hoping David Smith from Fulbourn will talk about the birds and wildlife of the river and fen. His experiences are gleaned from many years of walking the paths in these areas.

An application has been made for the funding of a new notice board at the Fulbourn end of the river. This will display a map of the river and its Fulbourn tributaries and items of local interest.

Thanks to the ongoing support of local residents and their feedback to the Environment Agency (EA), augmentation of the river flow has been sufficient to prevent a complete drying out of the riverbed so far - and this, in turn, has supported the ecological health of the river and the Fen.

Many opportunities exist currently to be involved with our river and engage with local water provision and management at a time of significant growth and change in Cambridge. Some difficult choices will have to be made regarding water supply and demand. The WRPS strongly believes our river, its water and its nature, should remain high profile so that we do not lose it. Should you feel the same then please join us.

Rebecca Lomas



Bridge Drive

For The Children's Society

Thursday 12th October 2023

Wilbrahams Village Hall, Great Wilbraham

Tickets: £18

1.45pm-2.00pm Welcome and seating

2.00pm-3.15pm Bridge

3.15pm-3.45 Tea

3.45pm-4.30pm Bridge

4.30 pm Prizes

Requests for and payment for tickets can be sent to

Diana Raikes

75 HighStreet

Great Wilbraham

Cambridge

CB215JD

01223881065

07973460898



Cheques need to be made payable to The Children's Society

**Please include a stamped addressed envelope
to return your tickets to you**



Autumn update

Six Oaks Solar Farm

It is quite possible that the Six Oaks scheme will be granted Planning Consent by ECDC in early September. We co-ordinated a meeting between representatives of Great Wilbraham, Little Wilbraham and Bottisham Parish Councils to agree a joint approach to the Developers about the amount and mechanics of an annual payment of/for “Community Benefits”. Nothing is finally agreed, but we are getting closer.

If Consent is granted, we need then to be very vigilant regarding the choice of the cabling route from the site to Cherry Hinton (see the previous Warbler); and to conclude a binding agreement for the Community Benefits.

Wilbraham Common Circuit Path

Many residents enjoy walking the circular route around the Wilbrahams, part of which is on or along Station Road, Great Wilbraham from/to the sharp corner where the track leads to the Common. This section is dangerous for walkers, despite the very welcome new 40mph vehicle speed limit there. Most of it can be



walked on the grass verge. WEG has recently strimmed off the long grass there and has asked GWPC to add this area to its grass cutting programme it has also recruited the Wilbraham Estate to cut back the hedging and trees to leave a good, safe width of verge for walkers.

The remaining stretch of highway verge nearest the sharp corner could be opened up for pedestrians but requires help from our County Council as Highway Authority (the owner of that strip). WEG has tried to negotiate a “permissive path” around farmland to the side and rear of the house there, but unfortunately, this is not possible, at least at present. Accordingly, WEG is seeking support from GWPC to lobby the County Council to complete a simple roadside path.

Reducing our consumption – of everything!

We can all do something to help save our Planet. The fashion industry contributes somewhere close to 10% of global greenhouse gas emissions (more than Aviation and Shipping combined), and we Brits buy more new clothes per head than any other European nation! If we can all buy fewer new clothes, use them for longer and perhaps pass them on to someone else, we can all benefit. So:-

SWISH!

A new word for most of us! “Community Clothes Swap” is not as catchy but explains the idea which you can experience at the Farmers’ Market on 9th September. There is a separate announcement about it elsewhere in this issue of the Warbler, and WEG is very grateful to the three ladies who have taken up the idea.

Our Natural Environment

If you have walked through the Award-winning churchyard in Great Wilbraham this summer, you will have seen and enjoyed the display of tall grasses and many wild flowers. Several WEG members are part of the churchyard maintenance team, and WEG built and erected the 8 new swift boxes on the North side of the church. The boxes probably went up too late to attract breeding swifts this year- but recorded swift calls have been broadcast from tiny speakers by the boxes, hopefully attracting the attention of next year’s breeding pairs.



WEG has been invited by GWPC to help draw up a new and detailed grass cutting regime and timetable for the verges and other areas maintained by GWPC. A balance needs to be struck between, on the one hand, tidiness, including road safety and clear footpaths and, on the other, seasonal grasses, wild flowers and biodiversity generally.

New Series of Open Evenings

We are planning more of these! Last year’s series included a riveting presentation by Dr Robert Mulvaney on Climate Change and the hard evidence of this being collected by the British Antarctic Survey. We have persuaded Robert to come to speak again in the Wilbrahams in October, just before he returns to the Antarctic. This is a real coup for us: he is a great speaker so watch out for posters etc.

Q: Why is so much of this article about Great Wilbraham? A: Because most of our members live in GW. We would love more support – and ideas for projects – from Little Wilbraham and Six Mile Bottom. Please get in touch. Have a look at our section of the Wilbrahams website

www.wilbrahams.co.uk/information/weg; find us on Facebook; email wilbrahamseg@gmail.com or ring 07594 601205 (Nick Toovey)

Nick Toovey



WOODLAND
WISHES

Bespoke & Traditional Funerals

4 High Street, Fulbourn, Cambridge CB21 5DH

Chapel of Rest at

Woodland House, 25a Station Road, Gt. Wilbraham CB21 5JA

01223 880002 (24 Hour Service)

www.woodlandwishes.co.uk



J&J DRAKE



Fully approved Electrical Contractor

All Work Certificated in Accordance with NICEIC

Free no obligation quotations

All aspects of electrical work undertaken such as re-wires, Electrical condition Reports, maintenance calls, New build Installations, Industrial and Commercial Installations

However small you may consider your job it will be treated with the same attention to detail as every one of our jobs.

Your Local Electrician

Unit 24 Hall Barn Road Industrial Estate, Hall Barn Road, Isleham,
Cambridgeshire, CB7 5RJ

Contact us on; 01638 781567 / enquiries@jandjdrake.co.uk

Notice Board

School Terms

Autumn Term

Friday 1st September - Inset Day
Monday 4th September - Term Begins
29th September - Inset Day
Monday 23rd to 27th October – Half Term
Monday 30th October - Term begins
Friday 22nd December - Term Ends

Spring Term

Monday 8th January - Term Begins
Friday 16th February - School Closes
Monday 26th February - Term begins
Thursday 28th March - School Closes

Bin Collections

**(Bin Dates are changing
See below for more
details)**

Black Bins

September

Monday 4th
Wednesday 20th

October

Wednesday 4th
Wednesday 18th

November

No dates available

Mobile Library

The Mobile Library visits every 4th
Thursday

Six Mile Bottom

Outside the shop, 0930 - 10.00

Little Wilbraham

Bus stop on High Street, 4.10-4.25

Great Wilbraham

Opposite the playground 4.30 - 5.00

Blue & Green Bins

September

Monday 11th
Wednesday 27th

October

Wednesday 11th

No dates available

November

No dates available

LW & SMB Parish Council

Next Meeting
Thursday 14th September
Little Wilbraham Church
7.30

GW Parish Council

Next Meeting Date
Tuesday 12th September
Memorial Hall
7.30pm

**At time of going to press the bin dates are only for Little Wilbraham.
Great Wilbraham residents should check the website below, the village
Website or social media
www.scambs.gov.uk/recycling-and-bins/bin-collection-changes-from-september**

Community Group Contact Details

Great Wilbraham Common Rights	Steve Bartlett stephen.bartlett@mindworks.ltd.uk	881096
Little Wilbraham Common Rights	Guy Mulley mulley.guy@gmail.com	812862
Great Wilbraham Guild of Change Ringers	Peter Sims ptrs28@googlemail.com	
Great Wilbraham Primary School	Office:	880408
GW Primary School PTFA	Emily Oliver emilystar_uk@yahoo.com	
Oil Syndicate, Great Wilbraham	Chris Gurney webadmin@oilclub.co.uk	
Over 60's	Carol Whitehouse Carolwhitehouse4@gmail.com	
Transport Woking Group	Tim Page David Richer hgvs.wilbrahams@gmail.com	881738 880547
Volunteer Group	Pat Simpson pas49@cam.ac.uk	
The Well-brahams	thewell-rahams.weebly.com well.brahams@gmail.com	
Weenie Warblers Mother & Toddler Group	Sarah Fordham	880698
Wilbrahams' Community Choir	Tony Goryn tonygoryn@icloud.com Gill Humphrey	07751-281341 811436
Wilbrahams' Gardening Club	Jackie Beadsmoore, jackiebeardsmoore@icloud.com	880889
Wilbrahams' Memorial Hall Bookings	Shirley Morley wilbrahamsmemorialhall@gmail.com	880723
Wilbrahams' Scrabble	Julia Cornwell juliacornwell@gmail.com	881751
Wilbrahams' Sports Club	Roddy Tippen	880728
Wilbrahams' Bridge Club	Di Raikes raikswilb@btinternet.com	881065
Wilbraham River Protection Society	Rebecca Lomas https://www.thewrps.org	



My Village Handyman *Services*

- DIY repairs and odd jobs
- Painting & Decorating
- Tiling, Flooring & Patios
- Gardening, Landscaping, Fencing & Decking
- Kitchen & Bathroom installation
- Brickwork, Dry Walling and Small Builds
- Carpentry and Plumbing
- Window and Gutter cleaning
- Jet wash and Patio cleaning
- Rubbish clearance and Tip runs
- Carpet cleaning and Wood Floor staining
- New doors or locks
- TV and Audio Installations
- Security and Garden lighting
- **No job is too Small or too Big!**

Free no obligation quotes and advice provided
Your very local Handyman from Great Wilbraham



Contact us to arrange a visit or quote

07500876376 or 01223 881700

Email: info@myvillagehandyman.com | www.myvillagehandyman.com

Community Choir



The choir have had a busy summer, with our most recent outing being an invitation to sing at Fulbourn United Reform Church Coffee Morning on July 8th in aid of the Tearfund WASH campaign, which empowers poor communities in Africa and across the world to clean water, secure sanitation and improved hygiene practices. It was a pleasure to be involved and sing, with the added bonus of cake too! The morning raised £502 for the Tearfund WASH campaign, which is a great effort. Thanks go to choir member, Carole Scullion, and all other organisers and helpers at the event for making us feel so welcome.

We are also delighted to report that the sum of £300 was able to be transferred to Wilbrahams' Memorial Hall as proceeds from the choir's annual concert, which fell on St George's Day this year. Many congratulations and thank you's to all who participated, helped and attended.

Throughout the year, the choir has sung at community events, funerals and weddings, as well as festival services. We intend to participate at the Harvest Songs of Praise at St John's, Little Wilbraham, on Sunday, 1st October. News and updates of Wilbraham Community events can be found at www.wilbrahams.co.uk

It has been wonderful to welcome new members and see recently joined members become regulars, and thanks, as always, to our amazing Choir Director, Gill Humphrey, for keeping us on track and performing at our best. If you would like to join us and add to our happy throng on a Thursday evening, or have any questions relating to the choir, please contact Malek Hyde-Smith on 07801 419207 or malek.hs@btinternet.com, or Gill Humphrey at gillianhumphrey@icloud.com.

The next choir rehearsal will be on Thursday 7th September.

Malek Hyde-Smith, Chairman

Untold Stories 31 – The Dhaliwals, Sam and Nindy

“Doorbell broken: please say Ding Dong very loudly.” Of course, I fell for it... the bell was in working order. So what sort of people were these Dhaliwals? Sam turned out to have amazing untold stories. Nindy was present for a part of the time.

I was born in the Punjab. My dad was in the police, so we moved around a lot.. My mum was a school teacher. We eventually settled in Chandigarh, and I went to an Irish Christian Brothers boys’ school. I went on to a college there and then to Punjab University in the Chemical Engineering department. During my first year my father visited Canada to see his brother in Edmonton, Alberta. As a result, I went to the university there for my undergraduate degree. That is where I met Nindy who was later to become my wife.

So, Nindy, you were a student too?

Nindy: I was studying education.

Sam, Chemical engineering sounds terribly learned. What did you end up doing?

I went on to a masters degree at the same university. Chemical engineers design and run refineries and other big installations that process oil and gas, and also deal with plastics and other substances. Some now work in the City of London because their analytical skills are useful there. Jobs were difficult at the time in Alberta, so I came to London. Jobs were difficult there too. I applied for more than 100 jobs and got one interview. Then I read an interesting article in a technical magazine and phoned the author. He worked in a company in Cambridge. They were not hiring, but he invited me to come and see them. I visited – and a fortnight later they phoned and offered me a job! Nindy came to visit me and we fell in love. We were married in October 1999 and moved to Milton. She was teaching in east London and caught the coach every morning.

Nindy: I grew up in a small town in Canada: We drove through Great Wilbraham one day quite by chance, saw a For Sale sign, knocked on the door, were shown the house – and fell in love with it. *(Nindy had to leave at this point.)*

Sam: We moved here in 2008. In 2005 I had started my own consulting business, and I sold it to a Belgian company in 2008 on the very day the markets crashed. I worked for the Belgian company until 2019, and this involved travel: we lived in Dubai for a year. There was a bit of a cultural difference between the company’s Eurocentric way of working and mine. In 2011 we went to Dubai for another two years. My European counterparts did not seem to realise that you have to be there to build a business. You have to meet people in person. All

those touchy-feely things can not be done remotely. The CEO did not travel much to meet customers. This frustration was one of the reasons I left.

So you came back to this house in 2013, and took part in the life of the village. You helped to start the transport working group (TWG), you joined the parish council, you got us funding for super-fast fibre-optic broadband.



My wife and daughters moved back here in 2013, but I stayed on for another year to finish up. Nindy looked after three children and ran the house on her own while also teaching. I returned in 2014, but it was not until 2019 that I did a few things: I signed up with the cricket team, though I have not had time to play much. I joined the parish council in 2020, and then there was the gigabit broadband thing: the

government funding was going to end in March 2021.

How many people in the village took that up?

I think it was about 100. I made the case that we did not want to miss out on this like we did on gas. This would not come again at this price. Gigabit broadband is not an option but a necessity like water or electricity.

Why did you leave the parish council?

I left two or three months ago. During the pandemic my work went pretty much to zero because I could not travel, so I had the time. Work picked up in late '22 and early '23 so it became difficult to manage my work-life balance. My nature is such that I like to be very committed in the things I do, and that was no longer possible.

And then there was the transport working group.

That started while I was still on the parish council. My role was to support the TWG: these were volunteers working on something people felt strongly about. But one has to be realistic about what can be achieved. The traffic is not going to get less. Reducing speed is what is important. The buffer zones are something tangible achieved and a help.

You mentioned cultural differences. Have you experienced much prejudice here?

When we moved here, there were not many families of Indian origin. In a small community, unless you are active in the community, you are not really a part of the community. That is difficult for a new family, because you do not know anyone. Our children did not go to the village school so we had no connection that way. It would be nice if the parish council arranged that new families moving into the village were contacted and welcomed systematically and invited to the various groups and activities in the village.

You mentioned your children.

We have three daughters, all born at The Rosie, Cambridge girls. The first two are only 14 months apart, which was challenging at times for Nindy when I was travelling. The oldest is 22, studying medicine at Newcastle; our middle daughter has just finished her Chemical Engineering degree at UCL, and the youngest is at St. Mary's in Cambridge.

How do you see your future?

We are very happy here. Nindy calls this our forever home. Having engaged with the community we now feel an integral part of the village. I work for myself, and it is going much better now. I see my consulting work continuing into the future.

One thing I meant to ask you earlier. I believe you recently cycled 100 kilometres in aid of the Head to Toe charity. You are a keen cyclist?

I am, and I like running. I have run two marathons and about six or more half-marathons. I like generating money for charity. We do as a family: the children like doing little runs for charity, and one shaved off her hair and gave it for a child having chemotherapy and losing her own hair. During the pandemic Nindy did parcels for nurses and other healthcare staff in the hospitals. People in the village contributed items.

Sam, thank you for sharing so much, both in this conversation and in so many other ways. You have certainly earned your place in the village, and I hope you and your family will always feel welcome and valued here.

John Tanburn



P.R.E. HEATING SERVICES

Registered Heating and Plumbing Engineers

Oil and Gas Boiler Servicing, repairs and installation

Fully guaranteed : Free quotations

Contact Phil Evans on: 07500 800441 or 01638 721343 :

preheatingservices@gmail.com



Wilbrahams' Memorial Hall



Angle End, Gt Wilbraham

www.hall.gtwilbraham.net

It is always strange to be sitting in a meeting in early August and talking

about Christmas(!), but at our Memorial Hall Trustees meeting this week we reviewed the lettings up to the end of the year. There are lots of private parties and events already booked in. The hall is a popular and easy to use venue for a party, so please plan ahead and make sure that you book your family celebration or party well in advance. We will always try and accommodate you if we can.

Energy Use & Solar Panels

Like every household and business in the UK, we are trying to optimise our energy use, whilst keeping the building comfortable. This is both to keep bills down and to reduce our carbon footprint to help the planet. Paul Lambton can now remotely monitor our heating and energy consumption, and we are now at the stage of getting quotations for solar panels on the roof of the hall building. We are asking the quoting companies to predict the energy generated from both the east and west slopes (overlooking the road / the recreation ground) and also to size batteries so that we can store electricity too. With the quotations, we will be able to review the options. If we decide to go ahead, this will be our next big project. We will need to apply for grants and raise money from the community to achieve this, but it will give the Memorial Hall greater financial security over the longer term.

EVENTS

The Wilbrahams' & Six Mile Bottom Vegetable, Flower & Produce Show

Our most recent event was the 'The Village Show' on Saturday July 15th. This was an amazing day, with lots of impressive entries and more visitors than ever for the prizegiving, auction, teas, and raffle. Thanks to Rosie White and her team for organising this wonderful event – she will be writing a separate article in this Warbler issue. All the proceeds are kindly donated to Memorial Hall funds.

Wilbrahams' Farmers' Markets

After a break in July & August, the monthly Farmers' Markets will resume on the second Saturday of the month from 9.30-11.30 (September 9th; October 14th; November 11th; December 9th). The market will run, whatever the weather, using the hall as well as our recreation ground. We already have lots of stalls booked in for September (old favourites and some new ones), so we hope you will come and support this initiative. It is an important source of income for

the hall, and also a great way to shop locally, reduce food miles and support Cambridgeshire's small businesses. Come and catch up with neighbours and friends and treat yourself to a fresh cup of coffee and a home baked treat! For Farmers' Market news follow:.. The Wilbrahams' Produce Stall is run by a rotating set of village charities for their own benefit. The Memorial Hall will run the stall in September & December, The Wilbrahams' Community Choir will run it in October, and the School PTA will run it in November. Each charity would greatly appreciate any home-baked donations. Also, if you have spare garden produce (vegetable glut/chutneys/plants) please donate them to the stall on the day.

Harvest Feast

Saturday October 7th
7.30pm

It feels like aeons ago – but our last (Italian) feast was just pre-Covid in January 2020. So, hopefully, the time is ripe to resurrect what was a really enjoyable and successful annual fundraiser for the Memorial Hall. This year the theme is 'harvest' – with food inspired by seasonal and local produce. The event is an informal buffet supper (food provided mainly by donation) with added entertainment of a quiz and fun cooking demos / interesting, themed talks and a bumper raffle.

Tickets are limited to 80 and are £10/head. You can buy a ticket online by visiting the hall website www.wilbrahamhall.co.uk

. If you are unable to pay online, please contact Emma Adams on 881609.

CELEBRATE NATURE'S BOUNTY –
A 2-COURSE FEAST OF LOCAL, SEASONAL
FOOD, LICENSED BAR, TABLETOP QUIZ AND
FORTNUM & MASON'S HAMPER RAFFLE
AT

THE WILBRAHAMS' HARVEST FEAST

ON SATURDAY 7TH OCTOBER 7.30PM
WILBRAHAMS' MEMORIAL HALL

PLUS
IAN CUMMING'S
HARVEST BAKING DEMO AND SHARE
& TALK FROM COFARM, CAMBRIDGE



TICKETS - £10/HEAD - WWW.WILBRAHAMHALL.CO.UK
RAISING MONEY FOR WILBRAHAMS MEMORIAL HALL CHARITY 300390

SWISH

At the September 9th Farmers' Market, Wilbrahams' Environment Group are trialling a 'SWISH' (Community Clothes Swap) in the meeting room. The aim of the swap will be to bring the community together and get lovely unused clothes people no longer wish to keep out of their wardrobes to help others, the villages, and our planet. Clothes donations will be taken from the beginning of September. Our first Swish will be children's and women's clothing only, with the hope of including men's in the future. You will be given tokens for items donated that can be exchanged during Swish for other clothes. There will be a very small charge for exchange - likely 50p per child item and £1 per adult one. Proceeds will go to Memorial Hall funds. The Swish is being run by three volunteers - Aga Hextall & Carol Whitehouse (coordinating Great Wilbraham donations) and Kathy Stringer (coordinator for Little Wilbraham donations). Please keep your eyes peeled on the village Facebook group/website announcements and posters around the villages for details.

Wilbrahams' Children's Christmas Party Sunday 10th December from 3 pm -5 pm. All Children to be accompanied by an adult. This is a free event. Just turn up and join in! There will be party games, refreshments, plus a visit from Father Christmas and Rudolph. The event is kindly sponsored by Great Wilbraham Parish Council and Little Wilbraham & Six Mile Bottom Parish Council

Memorial Hall Trustees & Committee

We would like to extend our thanks to Christine Clewes of Little Wilbraham for all her support and positive contributions at our meetings - she has just stepped down from the committee after seven years. We are very keen to have a replacement member from Little Wilbraham, to balance the committee, particularly a 'younger' member. Could that be you??? Getting involved in the hall, the recreation ground and play area is a great way of having a positive impact on village life.

If you would like to book the hall or have any practical queries, please contact Shirley Morley (Booking Secretary)

booking.wilbrahamsmemorialhall@gmail.com If you have any comments or suggestions for things you would like to see at the hall, please contact me: mail@emma-adams.co.uk

Emma Adams, Chair of the Memorial Hall Committee

Over 60s

Our July mystery tour was to Roxham for lunch, then a lovely trip on a boat. Our next outing was funded by Wadlow wind farm. We had a most enjoyable day to Cromer and the end of the pier show.



All the over 60s who went thoroughly enjoyed the day and would like to send their thanks to the wind farm for their funding.

Next dates: 31st August Bingo
 7th Sept trip to Skegness
 28th Sept Tea dance
 26th Oct members' lunch

All meetings start at 2 pm in the village hall.

For further information, contact Carol Whitehouse 07770 973702

Carol Whitehouse

Great Wilbraham Parish Council News

Welcome new Councillors!

The Parish Council will meet again in September, after the summer recess. We're delighted to report that the Council is now operating at "full capacity" with Rob White, Andy Martin and Dave Crowther being co-opted to GWPC. Their skills, experience and long-standing involvement as residents in the village are already proving to be a very helpful addition to our diverse and committed team of councillors, actively involved in maintaining and improving amenities, services and community support within Great Wilbraham.

New opportunity to be part of GWPC

Our wonderful Clerk, Sam Chambers-Turner, will soon be moving on but has kindly offered to support GWPC until we find a new Parish Clerk.

Could this be you? We hope that this rewarding (paid) role will attract applicants living in the local area. We would be happy to receive applications from people who have not served previously as a parish clerk. The successful candidate would receive training in local governance but must have a passion for administration and a wish to make a real impact in the life of the community. This is a highly flexible role, that has the advantage of enabling the incumbent to work around family commitments and the pressures of modern life. Please visit our website for a job description and details of how to apply.

40mph Buffer Zones

You will have noticed that 40mph buffer zones have now been installed at the entry and exit points to the village on Mill Road and Station Road, mirroring that already in place on The Lanes. Thanks again to the Transport Working Group (TWG) and everyone involved in moving our three new Motor Vehicle Activated Signs (MVAS) units in coordination with the Buffer Zones initiative. David Richer, the TWG Chairman, has written a piece separately, explaining how the MVAS will be used to calm traffic, both entering and within the village and providing early data which highlights problems of speeding traffic. Hopefully, we are now making progress from these coordinated efforts to improve safety on our roads, working with our local authorities and widespread volunteer support in a very meaningful way.

Double Yellow Lines and the 20mph Speed Limit

We were successful in our application for double yellow lines to be installed outside The Carpenters Arms, to prevent drivers from parking on the blind bend. Whilst we do not yet know when these will be installed, we are delighted that the County Council recognised the importance of addressing this highly dangerous practice.

Our application for the speed limit within the village to be reduced to 20mph is still being considered, alongside many others, by the County Council. We are told that the list of successful applicants will be published before the end of September. Thanks to everyone who continues to support this initiative, whether by driving at 20mph or by 'hosting' a '20's Plenty' sign in their front garden.

Village Maintenance

The councillors, together with the Village's Tree Warden, Nigel Start, have been reviewing their responsibilities for maintenance within the village. We have travelled 'far and wide' to audit the village from the Chalk Pits up Mill Road to the Parish Acre (near Herrings House) - yes, some of those locations were new to some of us as well!. We now have a list of items to address over the coming weeks and months and have identified some exciting opportunities for enhancing our natural environment.

We would like to thank residents who responded to our request to cut back

hedges, trees and vegetation encroaching onto paths and roads. There is still some work to be done. Please check that public access around your property, both on roads and footpaths, is not hindered by overgrown vegetation. Would you also remind drivers who park on the pavement and/or grass verges of the need to keep those areas clear, to enable pedestrians – including those in wheelchairs, pushing buggies or walking dogs - to pass by safely?

Dog fouling has unfortunately been drawn to the PC's attention in recent months. It appears that some people assume that dog poop is good for Mother Nature if it's left in hedgerows and long grass. This is not the case. We have a duty to protect nature from the toxins that can be found in dog mess; parasites and high levels of nitrogen and phosphorous can actually disrupt the biodiversity and harm our local livestock. Would you please ensure that you pick up your dog's poop and dispose of it in a responsible and considerate manner.

If you have particular items of concern that you think require maintenance by the PC, let us know via the Parish Clerk at clerk@greatwilbrahamparishcouncil.gov.uk.

The Queen Elizabeth II Platinum Jubilee Bench

The village was fortunate to receive a grant from South Cambridgeshire District Council (SCDC) to enable us to purchase a large teak bench, engraved to commemorate the late Queen Elizabeth's Platinum Jubilee. The Council is currently deliberating about the best site for the bench, in discussion with the SCDC Highways Department and local landowners. It is hoped that the bench will be in place before the end of September.

Parish Council Meetings

Our next Parish Council meeting is at the Memorial Hall on Tuesday 12th September at 7.30 pm. Please come along and say hello.

Cllr Christine Page

The Wilbrahams and Six Mile Bottom, Vegetable, Flower and Produce Show Saturday 15th July 2023

Well, what a Show...a huge success and great fun! Luckily it was mainly a sunny day, all the tables in the Hall were full of exhibits, and the Small Hall was overflowing with art and craftwork along with the under 12's creations and sunflowers they had grown from seed.

Many, many thanks to everyone who took part - there was a total of 700 entries which is a record! 125 of these entries were the stunning artworks by the pupils at Great Wilbraham Primary School and First Steps Nursery, which made a fantastic and colourful display. We really appreciate the support and

collaboration we have with the School and Nursery despite their very busy timetables.

CONGRATULATIONS to the winners of the awards:

(Please see photos on the back cover)

Stephenson Cup (Highest points in vegetable section): Roger Rayner

Richard Wright Cup (Spud in the bucket competition): (Heaviest yield grown from 1 seed potato***). Cheryl Patey

Les Potter Cup (highest points in the Fruit Section): Brian Purkiss

The Rose Bowl (Specimen rose): Mike Smith

The Brian Fisher Salver(highest points in the Flower section): Kathleen Dawson

David Waters Cup (best nurtured begonia from a plug plant): Jane Fell

Show Helpers Cup (highest points for Flower Arrangement section): Kathleen Dawson

The Social Club Cup (highest points in the Produce section): Emily Lane

2012 Diamond Jubilee Rose Bowl (highest points in the Handicraft section):
Joint win : Dru Goryn/Frances Toovey

Doris Franklin Cup (highest points in the Photography section): Joint win:
Martin Daunton/Dru Goryn

Thistle Tankard (highest points in the Under 12's section): Oscar Wilson

Junior Cup (most outstanding artwork): Joint win: Myah Jasmine Bradley/
Matthew Ward

*** The seed potato variety was CHARLOTTE and the winning weight was 1.82kg.

The Judges commented on the high standard of the exhibits - we thank them very much for their expertise and for so kindly giving up their time to come to Great Wilbraham to judge at the Show.

Thanks so much to everyone who helped make the Show the success it was and to all of you who came along and supported this village event. It was wonderful seeing so many people in the Hall in the afternoon enjoying the displays, chatting over tea and delicious homemade cake, watching the photos on the big screen and joining in with the auction and raffle....there was a real buzzy atmosphere.

Thanks to all your generosity, the Show also made a record amount of money for the Memorial Hall funds of £1,070. We are always very grateful to those of you who donate your exhibits to the Auction, which made £225 alone. Special thanks to local watercolour artist, Ian MacManus, who very kindly donated a framed painting of 'Newmarket Races', which made an extra £100.

The Show ran as a team effort this year, and a big THANK YOU goes to all the

Team Members: Jackie Beadsmoore, Trish Davis, Andrew Evans, Chris Fell, Sally Hames, Sue Lambton, Paul Lambton, Roz Polito, Carol Whitehouse, Judy Whybrow and to their marvellous band of “Helpers”!

Many thanks too, to Charles Raikes of the Memorial Hall Committee for very kindly stepping into the breach to present the awards in place of Ray Tilbrook (President), who was sadly unable to attend on the day. Also, many thanks to our brilliant Auctioneer, Nigel Start, accompanied by his grandchildren, Ollie and Lucy. A big thank you to Shirley and Richard Morley for their invaluable help with printing the Schedules and posters and for dealing with the finances. Also, to Emma Adams for very kindly supplying and printing the lovely prize cards. Grateful thanks to Martin Gienke and Tony Ryan for taking photos of the Show.

A huge thank you too to those who donated so generously with raffle prizes, always an important money raiser for The Hall and which made £345 overall. An encouraging number of local businesses also supported the Show, and we are very grateful indeed for their wonderful and varied raffle prize vouchers. We thank them all:

Shepreth Wildlife Park Four free entry tickets for adults or children
www.sheprethwildlifepark.co.uk

Full Circle Holistic Therapies 2 Vouchers worth £20 for: Free Full Massage or Reiki Session – an ancient Japanese healing method.
denise.fullcircle@gmail.com

Emma’s Pilates Free one-to-one Pilates Assessment & Free Group Session
07812766864 emmagan8@gmail.com

The Hole in The Wall £25 voucher to Dine www.holeinthewalldining.co.uk

The Carpenter’s Arms £60 voucher for 2 lunch menus
www.carpentersarmswilbraham.co.uk

Pimp My Fish Mobile Fish & Chip Kitchen Freshly Cooked Free Meal for Two www.pimp-my-fish.co.uk

Kirin Chinese & English Meals to Take Away £10 voucher to spend High Street, Fulbourn

Beaumont’s Family Butcher £10 Food Fayre Voucher High Street, Fulbourn

Scottsdale’s Garden Centre £10 Voucher www.scotsdalegardencentre.co.uk

The date for next year’s Show is **Saturday, 13th July 2024** and we look forward to seeing you all again then, so please ‘save the day’!

If you would like to be involved with the Show, help in any way or have any ideas please get in touch.

Rosie White Tel 01223 881293 Mobile 07757982934 Email
rosiewhite77@hotmail.com

Advice from the Fruit and Vegetable Judge

Preparations for having entries for the village show start early. For some vegetables like garlic, planting needs to be done in the previous autumn, normally November, for the cloves to establish roots during the cold to grow and develop into good bulbs. A temperature range of between 0-10°C is required but is becoming increasingly difficult to achieve in the garden. The late autumn had above-average temperatures recorded with a particularly cold snap in the second week of December 2022 then mild again into January 2023. It was, therefore a joy to see so many almost identical garlic bulbs to judge. Other plants such as Alisa Craig onions are raised annually from seed sown in December or January to give seedlings to be transplanted into their final growing positions be they in the garden or, for the more dedicated grower, in pots. Other vegetables are raised later as they are quick to grow and harvest.

Fruit is almost always picked from established plants and not raised annually from seed so forward planning is required to get your plants ready and to get conditions right to achieve a harvest. It was therefore good to see such a range of fruit exhibited including rhubarb. For some sections, it's easy to award prizes, but for others such as the three sticks of rhubarb, it was quite difficult.

When presented with such high standards it is often difficult to distinguish between entries. When I have difficulties, I recall my tutors saying to me when all things appear to be equal, remember the entry is ultimately something to be eaten or to flavour. The tray of vegetables, for example, all things being equal, is therefore considered as how good they are as ingredients for a family meal with children. The herbs, too, all things being equal, are also judged on their usefulness to flavour a dish, so key qualities are freshness, aroma, and flavour. Getting a prize is well earned and adds to the competition, but consideration is also given to encourage growers to exhibit. It was, therefore, a delight to see some carrots entered that, although they did not get a prize, need to be mentioned. Hopefully, that unknown exhibitor will be encouraged to enter again next year to get a prize. Also, remember to follow the show schedule, as no entry should be excluded as being too big, too small, or too numerous!

Wishing you a good harvest.

Johnson Bede Lane Trust

This is a local charity which can make small grants to people and projects which benefit those who live in Little Wilbraham and Six Mile Bottom.

We currently support people with winter fuel grants and funds for equipment to support health and education need. Enquiries and applications are treated in strict confidence

You can contact the Trustees via JohnsonBedeLane@gmail.com

Trustees: Adele Helmy, Duncan Wells, Guy Mulley, Karen Ostenfeld, Juliet Carter, Holly Tilbrook, and Revd. Alice Goodman



Coming Events

The House, the Horse & the Holes in the Ground

Wednesday, 13 September, 10.30 am-12.30 pm. Free.
Wandlebury Country Park

Join the Wardens for a stroll around Wandlebury Country Park and discover some of the Iron Age and 18th-century history of this Ancient Monument, country estate and stables. Finish at the 600-year-old Tadlow Granary for a look at some archaeological finds.

This event is part of the [Heritage Open Days](#). Please wear footwear and clothing for being outdoors. Meet at the large noticeboard near the car park.

Free event, suggested donation £3. No need to book.

Bourn Windmill

Sunday, 17 September, 2 pm-4 pm

Bourn Windmill is the oldest windmill in the country, set in beautiful scenery. On five Sundays during the summer, the mill is opened, and guides will show you how the mill works and tell you the history of this fascinating building.

Not only can you see inside, you can also have a go at the incredible task of turning the whole mill on its post - an amazing experience.

The mill is owned by local charity Cambridge PPF and run by dedicated volunteers.

Tea and cakes are available to purchase. Members free, non-members £3 adult, £1 per child. The last tour is at 4 pm. No need to book.

Hinxton Watermill Open Day

Sunday 1st October 2.30 pm-5 pm - last entry at 4.30 pm

Come and look round this stunning working watermill that dates to the seventeenth century. On six Sundays during the summer the mill is opened and guides will show you how the mill works and tell you the history of this incredible building. There has been a watermill at this site since the time of the Domesday Book in 1086.

Children can take part in the popular Where's Ratty contest and have the chance to win a prize! Owned by local charity Cambridge PPF and run by dedicated volunteers the mill is set in picturesque surroundings on the River Cam, in the village of Hinxton. There are also walks along the river and picnic tables.

Members are free, non-members £3 adult, £1 per child. No need to book

Holiday Bushcraft Wandlebury Country Park

for 5-12 years. Mon 23 Oct– Fri 27 Oct, 8.30 am-4 pm

Holiday Bushcraft at Wandlebury is designed for children aged 5-12 and is run by experienced, qualified teachers from Wild Thyme & Embers, who will inspire children and share their knowledge and skills for surviving in the wild. The sessions focus on practical bushcraft and survival skills and follow a forest school approach encouraging self-confidence and a sense of achievement.

All basic bushcraft techniques suitable for this age range will be taught, including Shelter building, Knots and rope work, Use of cutting tools and whittling, Plant and tree recognition and uses, Seasonal woodcrafts, Fire lighting techniques, Wilderness cooking skills, Natural art and crafts and Woodland games

The cost for each day is £42 per child. Children need to bring a packed lunch and a large water bottle (which can be refilled throughout the day) and dress for the weather. Please send children with a change of clothes and ensure they wear suitable footwear, preferably closed-toe shoes such as hiking boots, wellies or trainers

Please book via the Wild Thyme & Embers

<http://www.wildthymeandembers.co.uk/holiday-bushcraft-club/>



MOT Testing, Servicing & Auto Repairs

Unit 3, Station Yard, Wilbraham Road
Fulbourn, Cambridge CB21 5ET

Tel: (01223) 880747

Secure Self Storage

Simple, Safe and Secure Self-Storage for your Business or Home

Personalised entry with unique key fob

Extensive 24hr CCTV

Convenient vehicle access to all units for easy loading and unloading



Please call 07841 930065 or email admin@camstorage.co.uk

www.camstorage.co.uk

Annual Photo Competition

We had another great selection of photos this year for the Photographic classes at the Flower, Vegetable and Produce Show in July

The judging this year was carried out by a new judge, Jim Bennet, from Cherry Hinton, who will be returning in September to comment on the pictures and to give some more information about what influenced his decisions. If you entered, or might enter another year, this is an interesting evening with much to learn about how to get on the podium!

As usual, we had five subjects to inspire (or terrify!) the contestants. The Winners and Runners-up in each class were:

Subject	Winner	Second	Third
Wheel or Wheels	Carol Whitehouse	Dru Goryn	Dru Goryn
The Seasons	Martin Daunton	Tony Ryan	Veronica Atherton
History/Vintage	Nick Toovey	Emily Oliver	Tony Ryan
Food	Alison Hargreaves	Dru Goryn	Emily Oliver
A Reflection	Paul Hughes	Martin Daunton	Martin Daunton

The overall Champion Photographer (which includes points for Highly Commended and Commended as well as 1st, 2nd, and 3rd) was shared between Dru Goryn and Martin Daunton.

Chris Fell

The Class Winners in the Photographic section of the Vegetable, Flower and Produce Show

Top Row: Wheel by Carol Whitehouse, Seasons by Martin Daunton and Reflection by Paul Hague

Second Row: Historic or Vintage by Nick Toovey and Food by Alison Hargreaves





**THE
CARPENTERS
ARMS**
GREAT WILBRAHAM

NO CATCH, JUST CATCH UP'S

Every 3rd Friday of the month join us for steaming cups of coffee or tea with a slice of cake, free of charge! Catch up with other locals or get comfy in one of our cosy nooks.

10:30am until noon

CARPENTERS ARMS WEDNESDAYS

Why wait for the weekend to enjoy your Carpenters favourites? Tuck into two courses* from our main menu and a cocktail for £30 every Wednesday from 6pm.

Follow us on our socials for news and updates:

Instagram @thecarpentersarmswilbraham

Facebook @thecarpentersarmswilbraham



The Wilbrahams' Social Club

Summer at the Social Club has been very mixed. Wednesday and Thursday evenings continue to be well supported by the Table Tennis club and the Choir, entertaining evenings. The three home games of cricket



early in the season were busy afternoons, with everyone enjoying excellent cricket, refreshments and the sun! Coffee Mornings on Saturdays are still well attended providing a social get-to-gether for a chat and catching up with friends. The selection of cakes is appreciated. Why not join us?

Coffee Morning dates 10.30 am - 12.00 noon on: September 30th,

October 28th, November 25th, and December 23rd.

July has been quiet, and we have had no response to our plea for more volunteers to work on the bar, so it has been open infrequently.

Unfortunately, nobody except the committee attended the AGM. It is a bit of a gloomy picture, with membership this year down by over 50% New members are always welcome. The annual membership is £5. And once again, new bar volunteers and committee members would be great.

The Social Club Committee

Wilbrahams' Churches Services & Events

Autumn and winter church events are in the pipeline for Harvest, All Souls and Christmas carol services, etc., but most dates have not yet been finalised. We aim to keep the parish informed as soon as possible about all our events via Facebook (Wilbrahams Community Group page) and the village website - wilbrahams.co.uk - where you can check us out under 'Local Information'. If you subscribe to the village website you will get emails keeping you up to date with everything that is going on in the village, not just the church. Just enter your email address at the foot of the home page where it invites you to subscribe and click 'subscribe.'

Draft List of Events to look out for from September

Harvest Songs of Praise this year will be at St John's Little Wilbraham on Sunday 1st October at 15:30.

Harvest Festivals at both St Nicholas' and St John's - dates to be confirmed.

All Souls, an evening service in early November to be confirmed.

Bonfire Night, organised by Little Wilbraham Parish Council, will be held on the evening of Sunday, November 5th. St John's will be providing refreshments.

Christmas Carols at St John's Little Wilbraham Sunday, 17th December.

Christmas Carols at St Nicholas' Great Wilbraham on Sunday 24th December.

Midnight Mass St John's Little Wilbraham 24th December to be confirmed.

Christmas Day St Nicholas' Great Wilbraham 09:30.



The August Wednesday Coffee Mornings at St Nicholas' proved very popular once more and raised a generous amount for The Childrens' Society, this year's chosen charity. Thank you to everyone who supported them and contributed so lavishly to delicious cakes and other treats for us all to enjoy.

The Wednesday family services at St Nicholas' were very much appreciated this year run by our splendid Pastoral Assistant, Ben Davidson, who also ran some very interesting Bible studies at St Nicholas'. Sadly, Ben has left us now to continue his PhD in Cambridge, but we look forward to seeing him regularly attending services here.

Regular Services at St Nicholas' & St John's

St Nicholas' Great Wilbraham

9:30 Every Wednesday: Morning Prayers - a short service from the Iona Wild Goose service book.

3:15 Wednesday Church, a service for young children and their carers, we hope will be restarting in the Autumn school term. Watch out for posters, website and Facebook information.

9:30 First Sunday in the Month: Come and Join family service overseen by our Lay Preacher, Steve Mashford.

9:30 Third Sunday in the Month: Holy Communion

St John's Little Wilbraham

9:30 Second Sunday in the Month: Holy Communion

9:30 Fourth Sunday in the Month: Matins

Social chat and refreshments follow most of our services in both churches.

Jacquelin Beadsmoore

Rupert Woods



The Well-brahams Mental Health and Well-being Group

September is upon us, the children will soon be back at school, and it won't be long before the countryside around us starts to turn from green to

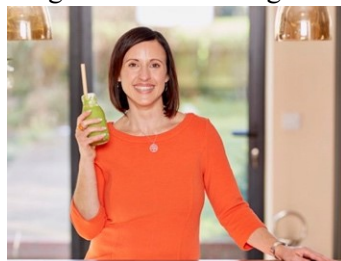
brilliant golden hues. This is naturally a time of change, but for many, the approaching autumn and winter months can signal a difficult time as the evenings start to draw in and the temperature begins to fall. So, it's also a good time to take stock – to think about how to adapt to the changes and approach the months ahead positively.

In fact, this is a time of great energy and activity. All around us, plants cease their active growing, but this isn't a time to stop. Our energy can be used collecting seeds, preserving fruits and vegetables, squirrelling away the abundance of the harvest and being thankful for it.

Now is the perfect time to start thinking about the future – time to sow seeds, plant bulbs and make plans for next year's borders and tubs. It's also the perfect time to become absorbed in learning a new craft or skill, or taking up a new hobby, whether alone or as part of a group. Consider also the powerful and therapeutic power of music; it can inspire and entertain but can also help improve our mental health. There's plenty of research to show how it can help reduce stress, improve memory, improve motivation and even help manage pain. So this might be a good time to start compiling a playlist of inspiring, soothing and meaningful music to tap into for enjoyment and support in the future.

The Well-brahams have been busy over the summer planning some new activities and events for our villages. By the time this goes to press, we anticipate that over 40 children will have had three brilliant days with Charlie Brown and Rachael Cox at our free and highly popular Multi-Sports and Mindfulness sessions at the end of August. We are very grateful for the incredible effort these two wonderful people are making for the well-being of our local children. Thanks to the Memorial Hall Committee for allowing us to use the Rec and Tony and Dru Goryn for opening up the Social Club and clearing up afterwards!

In June and July we hosted two talks by nutritionist Rebecca Hancock who covered a diverse range of subjects, from the immune system, stress, and cardiovascular health, and



looking ahead, we're delighted that Rebecca will be providing another talk early in the New Year, for which the subject and date have yet to be finalised.

We're also thrilled that Helen Clarke has kindly offered to run another Autumn watercolour painting workshop on Saturday, 21st October. This will be a free event, held in St Nicholas' Church between 2 pm and 4 pm; all materials and refreshments will be provided, and the limited places can be booked by emailing Helen at helen@summerhouse-paintings.co.uk. These workshops are very popular, so book soon!



Keep your eyes open too for information being posted around the villages about an event we're currently planning to hold in the Community Orchard at some point in September. As we're anticipating an abundant harvest, we'd like to invite everyone to an afternoon of fruit picking and a picnic. Details will be revealed soon.

Many people will be pleased to know that our highly popular Warm Mornings, which have been renamed Thirsty Thursdays, will be resuming in October. All details and dates are being finalised and will be publicised on posters around the villages, on the village website, and Facebook.



Lastly, could we make a plea for some help to support our endeavours. The Well-brahams group has been running now for over seven years, and one of the first things we agreed on was that our events and talks would be free to all participants. We've managed to maintain this, mainly through various small grants and funds, personal donations, and some support from our Parish Councils. This will continue, but it means that our cash flow can be a little unnerving! Therefore, any donations will be very gratefully received at all our events, either in the form of cash that we can feed back into our future projects or in the form of items for our Food Bank. Thank you.

The Well-brahams Mental Health and Well-being Group

Wilbrahams Refugee Support (WRS)

The Wilbrahams Refugee Support (WRS) group was set up shortly after the Russian invasion of Ukraine. Its primary aim is to enhance the physical and mental well-being and to relieve financial hardship amongst those granted refugee status and their dependants living (temporarily or permanently) in the Wilbrahams and the surrounding area. Here we update the readership on our progress and challenges and how we are enabling the Kulakovas - the first family supported by the WRS group - to transition to independence.

Andrew, Olena, Nina, Lev and Max have been warmly welcomed into Great Wilbraham and have integrated well into the community, recently being spotted watching the cricket! Lev is doing well at school; Nina continues to enjoy working at Anglesey Abbey, and both Andrew and Olena are busy looking for work. One of the biggest challenges they face is enhancing their English, particularly for interviews. Recognising this, the WRS group arranged daily meetings with a dozen members of the village over the summer: Andrew reports that these have been highly productive and enjoyable and wanted to thank everyone who has provided their time. Mock interviews have also been arranged. As outlined in our previous Warbler articles, both Andrew and Olena are experienced professionals: Olena has used her legal background working in the commercial sector, while Andrew has extensive experience in manufacturing and sales. Both are eager to find work, and they would welcome approaches from any local companies looking to benefit from their wide skillsets and experience (please message the WRS group, and we can put you in touch). The WRS group have also supported the Kulakovas in navigating various complex British systems, from tax to the DVLA.

The WRS group itself has required infrastructure, and time has gone into this, including applications to the Charity Commission (so far unsuccessful) and setting up a bank account. This infrastructure will facilitate and expedite the support we can provide to victims of future humanitarian disasters.

We have exhausted multiple avenues in trying to bring another family to the villages – most recently with respect to a further house that was offered to us for rental in Great Wilbraham. Regrettably, the support team for Ukrainian refugees in South Cambridgeshire District Council was unable to find a family or ‘buddy group’ to fill it. While this is very disappointing given the substantial number of families needing a home, the WRS group understood that this reflects the rural location and poor public transport serving the village. If the readers know of any refugee Ukrainian family who need accommodation - realistically with their own transport - we would welcome an informal discussion.

Finally, we want to reiterate our thanks to all those who have generously donated to the WRS group or provided their time, support and friendship.

Will Brown

ANGLIAN LEISURE BOTTISHAM BRINGS YOU THE FEELING OF LIVING FITTER, HEALTHIER AND HAPPIER!

Activities:

- Children's swimming lessons.
- Judo lessons.
- Fitness classes.
- Swim sessions.
- Fitness suite.
- Women's only football for wellbeing.
- Hardcourt bookings.
- Sports hall bookings.
- Gymnasium bookings.
- Dance studio bookings.
- 3G bookings.
- Pool bookings. Please see our website for more information!
- Party packages.
- Membership schemes. Email: bottisham@anglianleisure.co.uk
- Car Boot Sales.



Or

Phone: 01223 811121

Visit us: 1 Lode Road, Bottisham, Cambridge, CB25 9DJ



CPRE (Campaign to Protect Rural England)

Rooftop Revolution solar energy campaign

More than half of the solar panels required to hit government net-zero targets could be fitted on rooftops and car parks, a report for CPRE, the countryside charity, has found. The research, by the UCL Energy Institute, shows that decarbonising the grid requires far less land than previously feared.



The government is advised to set a national rooftop solar target of at least 40GW by 2035. Installing solar panels unobtrusively on existing buildings and car parks would enjoy near-universal public support and help minimise objections to large solar farms in the countryside, the report says. The potential of urban brownfield sites to generate renewable energy is being dramatically underutilised

at present.

A series of crises, including energy security, food security, climate change, nature recovery and housing, have placed the countryside under intense pressure. The report concludes that, to transition to renewable energy in the timeframe required, there is no alternative but to accept ground-mounted solar projects will be necessary. However, it offers hope that valuable landscapes can be protected, the need for additional large greenfield schemes gradually removed and contentious planning disputes avoided if rooftop solar is prioritised.

The government has set a national target of 70GW of solar energy generation by 2035. The independent review analysed and quantified the solar photovoltaic capacity of rooftops and car parks across England, providing an assessment of the total energy that could be generated.

The key findings are:

Installing solar panels on existing rooftops and other land such as car parks could provide at least 40-50GW in England by 2035

Longer term to 2050, and with further investment, there is potential for up to 117GW of low-carbon electricity to be generated from roofs and other developed spaces

CPRE is calling on the government to ensure all suitable new buildings have rooftop solar as standard. Regulations should be updated so that solar capacity is

a requirement of planning permission for major refurbishments and new residential, commercial and industrial buildings.

With the right policies, rooftop solar could hand power back to the people. A decentralised future of renewable-energy cooperatives sprouting up in communities across the country, supported by the government, is a realistic option in a net-zero world.

To find out more, go to <https://www.cpre.org.uk/what-we-care-about/climate-change-and-energy/renewable-energy/our-rooftop-solar-campaign/>

With thanks to CPREssex.

From our MP, Lucy Frazer MP

I hope that you are having a fabulous summer so far. To tie in with the parliamentary recess, I wanted to update you on some of the work I have been doing recently in South East Cambridgeshire for you!

Improving our road and rail networks

I know that traffic on the A10 and the resulting ‘rat-runs’ through nearby villages continue to pose major problems for all of us. To ensure that we can progress with the necessary A10 upgrades as rapidly as possible, I recently arranged a meeting with officials from the Department for Transport to make sure that the A10 feasibility study group can fully prepare its Outline Business Case, which is the next stage of the process.



I have also been working with local partners to deliver better rail infrastructure for our region. In June, Matt Hancock and I met with the Rail Minister to highlight the benefits of reinstating the Newmarket Curve to increase services between Newmarket and Cambridge. Network Rail is currently considering these plans and will report in due course.

Following an extensive study and representations by myself and others, the East West Rail link will not take the Northern Route (which would have affected residents of Histon, Impington, Milton, Landbeach, Waterbeach, Horningsea and Fen Ditton).

Supporting our bus services

Following my efforts at the end of last year to prevent Stagecoach from axing or significantly altering 23 local bus routes, I successfully campaigned for the Combined Authority to renew the re-tendered bus services for at least another 12 months from April 2023.

Since then, the Government has granted the Cambridgeshire & Peterborough Combined Authority more than £2.3 million to help improve our region's bus network. This is in addition to the Government extending the bus fare cap, at £2 until the end of October 2023 and then £2.50 until November 2024. Last month, I wrote to the Mayor to ask how he intends to use the funding, and I look forward to him confirming his plans.

Meanwhile, I continue to press Stephenson's for a single bus service between Ely and Cambridge, as well as including a stop in Bottisham on the Number 11 route. I have also asked Stagecoach to make the necessary improvements to the Number 9 and Number 19 services.

Defending drivers

I object to the GCP's proposed congestion charge because I believe it would make my constituents worse off and leave them without a viable travel alternative. I launched a survey at the end of last year, and it showed that 92% of respondents share this view, as do 58% of the GCP's 'Making Connections' 24,000 consultees.

The GCP's recent revisions to the scheme do little to address its fundamental issues and would instead reduce the revenue raised by the charge by a minimum of £20 million a year, surely diminishing what they are able to deliver. That is why I will continue to oppose the scheme in my representations to the GCP.

Widening healthcare provision

In June, the Health Secretary confirmed that the specialist Cambridge Cancer Research Hospital will be funded as part of 'Cohort 2' in the Government's New Hospital Programme. This follows years of active campaigning I have done for this with my neighbouring MP, Anthony Browne, which involved highlighting the need for this hospital to Health Minister, Lord Markham, and other colleagues.

Strengthening SEND provision

Having worked closely with the Director of Education at Cambridgeshire County Council for many years to press the Schools' Minister for more investment in our SEND provision, I am thrilled that the County Council has received an additional £49 million from the Government, funding about 463 additional special school places and extra support for 105 pupils at mainstream schools over the next three years.

Sorting potholes

Although it is the responsibility of Cambridgeshire County Council to actually repair the highways, they are funded by Government, and I report problems on behalf of my constituents and follow-up with the authority if any issues remain outstanding.

So far this year, I have reported potholes in 36 different locations to the County Council on behalf of my constituents. I am pleased to have heard back on almost all of these locations from the county's highways team to say that the issues have been rectified.

Photo-Hosting South East Cambridgeshire Volunteer Awards ceremony in Parliament

Lucy Frazer MP

How to Keep Up ?

Well, where to begin? It might be August, but Cambridge is in the news - again – and it's all go!

I'll start on a local and positive note: our three communities have been successful again in bids for County funding for highways improvement, adding to the success of the buffer zones and Motor Vehicle Activated Signs (MVAS) installations in Great Wilbraham.

In the case of Six Mile Bottom and Little Wilbraham, this will mean the purchase of speed indication signs that will flash at us and anyone passing through, to indicate speed of travel: green for speed-limit speed; red for 'slow down'. In the case of Great Wilbraham, yellow lines to prevent parking on the bend near the Carpenters' Arms. In relation to parking, South Cambs hopes it will be later this year that the District will have control of civil parking, allowing wardens to enforce parking regulations instead of the police.

The highways improvement projects were put forward to the County by our parish councils and, in the case of Great Wilbraham, along with the transport working group. The next bidding round for such schemes opens in October, by which time we should know the outcome of the bids for 20mph limits.

For those of you concerned about potholes, you'll perhaps have noticed that the yellow markings are now brighter yellow and that the holes are being filled a little more quickly. The county received some central government funding (£3.6 million or 1.8%) for Cambridgeshire out of the national total of £200 million. This was set aside following urgent requests from counties all over the country after last winter's bad weather.

Buses have been in the news a lot recently. Here, the well-loved service to Newmarket every Tuesday and Friday, with subsidy from the Mayor and Combined Authority, continues. Sometimes it's late – for various reasons – but it continues to run and to be much used by those without easy access to cars. We know, though, that bus services need a real boost and real sustained long-term public funding: that's the nub of the local campaign for better bus transport. Here, anyone without a car going into Cambridge has to rely on a one-bus-a-day service (out at 7.10, back at 18.20) to the park and ride thence to the city and back.

On proposed cycle paths, we are now on the County's Tier 2 active travel list. It's not Tier 1, but, as supporters in WEG will attest, it's an advance on our not being on any tier at all.

The recent big news story, though, was Michael Gove's announcement concerning housing, whether it was 250,000 houses in the greater Cambridge region, or the 'new urban quarter' on the edge of the city. There is little clarity over the larger figure; but more detail on the smaller figure has emerged. Mr Gove has appointed a lead person, Peter Freeman, along with a group of 'super planners' (from precisely where is not clear) to expedite the delivery of the 'urban quarter' known to us locally as the area around Cambridge North station, designated as a brownfield site and already put forward as an area for development. It would seem, then, that the water treatment plant, located in this area might well be moving to allow the development to go ahead? Mr Gove himself, as Secretary of State, has the final word. We must wait to see what effect his speech, and in particular, his remark that the process be 'accelerated', has on the formal outcome of this statutory process.

All this activity, whether the urban quarter or indeed the more nebulous prospect of 250,000 houses, encompasses the provision of housing, office and lab space, and public amenities. But what about infrastructure? Indeed, without sufficient water, electricity, roads, public transport and related facilities, none of this can happen: and for all these, we need money and collaboration across the sectors. I've written before that we live in one of the most economically privileged areas of the country, one where people come to work and thus want to live. But it's one where far from everyone is privileged. We need better public facilities and transport for all, to sustain the kind of communities in which all can feel welcome and can thrive.

Claire Daunton, County Councillor 07905 47339
Claire.daunton@cambridgeshire.gov.uk

Embracing AI for Enhanced Community Communication in The Wilbrahams

In the quiet and picturesque village of The Wilbrahams, where the charm of traditional living meets the possibilities of modern technology, a new wave of innovation has emerged: Artificial Intelligence (AI). As our community continues to grow, so does the need for effective communication, and AI is proving to be a valuable tool in connecting us like never before.

With AI at the helm, our village's communication infrastructure is undergoing a significant transformation. Gone are the days of relying solely on traditional methods, such as notices on bulletin boards or printed newsletters. Instead, AI is ushering in a new era of digital communication that is efficient, inclusive, and easily accessible for all residents.

One of the most noticeable changes is the emergence of virtual assistants designed to cater to the specific needs of our community. Whether it's seeking information about local events, reporting issues to authorities, or accessing essential services, AI-powered virtual assistants are available round the clock to provide instant support. These digital helpers act as a friendly guide, bridging the gap between residents and relevant information, thereby fostering a sense of unity among all members of The Wilbrahams.

Moreover, AI-driven chatbots have become invaluable in streamlining interactions between villagers and local government bodies. Residents can now voice their concerns, share feedback, and participate in surveys with ease. AI's natural language processing capabilities enable these chatbots to understand and respond accurately to queries, making the communication process more efficient and responsive.

Community forums and social media groups have also seen a boost with AI integration. AI algorithms help facilitate meaningful discussions by filtering out spam, detecting misinformation, and promoting constructive conversations. This ensures that our digital platforms remain safe, respectful, and enjoyable spaces for everyone to engage in open dialogue.

Beyond local interactions, AI has opened up avenues for The Wilbrahams to connect with the wider world. Through online platforms and digital tools, we can now share our unique culture, history, and traditions with global audiences. Whether it's promoting local businesses, inviting tourists to experience our hospitality, or collaborating with like-minded communities across the globe, AI-enabled communication has widened our horizons.

However, it is essential to remember that while AI plays a crucial role in enhancing communication, it cannot replace the essence of genuine human connections. Personal interactions, community gatherings, and face-to-face conversations continue to be the bedrock of our village's unity and togetherness.

AI should complement and enhance these aspects rather than replace them. As we embrace AI in our community, it is crucial to prioritize data security and privacy. Implementing robust measures to safeguard sensitive information is imperative to ensure that our residents feel safe and confident in engaging with AI-powered systems.

In conclusion, the integration of AI into our village's communication infrastructure is a step forward in creating a more interconnected and empowered community. By leveraging the strengths of AI, we can bridge gaps, foster understanding, and strengthen our bond as neighbours in The Wilbrahams. As we move forward into this exciting era of innovation, let us embrace AI as a valuable ally in our journey towards progress and unity.

WARNING This article was written by AI ChatCBT. It took about 30 seconds to write. The editors take no credit or responsibility for the views expressed.

List of Advertisers

Advertiser	Page
Andy's Test Centre Fulbourn	51
Carpenters Arms	54
Colour Fence Cambridge	20
Emma Gant	20
Fulbourn Cat Sitting	27
Handyman	36
Healthcare Homes	12
Healthcare Solutions	13
J & J Drake	33
Peter Fisher Carpets	28
PRE Heating Services	40
Rothwell's Carpet Cleaning	20
Secure container storage	52
Simon Lively	10
The Hole in the Wall	19
Tutor, Wings to Fly	20
Wilbraham Boiler Services	28
Good Technology	28
Ernest Doe	22
Woodland Funeral Services	33
SCR Recovery Transport & Scrap	27
Bottisham Sports Centre	60
Nindy Dhaliwal	10

Wilbrahams' Warbler Editors

Caroline Bird

22 Frog End, Great Wilbraham CB21 5JB

Tel: 01223 881876 / 07870-645942 Email carolinebird17@gmail.com

Martin A. Gienke

Iceni Cottage, 46 Church Street, Great Wilbraham, Cambridge CB21 5JQ;

Tel 01223 882426 email martin@gienke.co.uk

John Torode

7 High Street, Little Wilbraham, Cambridge CB21 5JY

Tel 01223 812059; 07886103132 : email johnboy_torode@hotmail.com

Printed by Burwell Community Print Centre

Bus Service 18 Tuesday & Friday	Lt. Wilbraham To Newmarket	Newmarket to Lt. Wilbraham
Little Wilbraham, Manor Close	09.30	14.30
Great Wilbraham, Church St.	09.35	14.25
Fulbourn, Six Bells	09.40	14.20
Fulbourn, Bakers Arms	09.45	14.15
Teversham, Ferndale	09.47	14.13
Teversham, Marshall's Close	09.50	14.10
Newmarket Road, Park & Ride	09.55	14.05
Newmarket Road, Park & Ride	10.00	14.00
Teversham, Marshall's Close	10.05	13.55
Teversham, Ferndale	10.08	13.52
Fulbourn, Bakers Arms	10.10	13.50
Fulbourn, Six Bells	10.15	13.45
Great Wilbraham, Church St.	10.20	13.40
Little Wilbraham, Manor Close	10.25	13.35
Six Mile Bottom, Tree Tops	10.30	13.30
Newmarket, Guineas Bus Station	10.45	13.15

The Wilbrahams - Cambridge (via Park and Ride)	Monday- Friday	Saturday
Six Mile Bottom, London Road	06.58	07.58
Little Wilbraham, Manor Close	07.04	08.04
Gt Wilbraham, Carpenters Arms	07.08	08.08
Cambridge Drummer Street D2	07.42	08.42
Cambridge Drummer Street D1	17.39	17.39
Gt Wilbraham, Carpenters Arms	18.13	18.13
Little Wilbraham, Manor Close	18.17	18.17
Six Mile Bottom, London Road	18.23	18.23

Disclaimer

While every care is taken in preparing the content of this magazine, the editors disclaim all warranties, expressed or implied, as to the accuracy of the information in any of the content. It also (to the extent permitted by law) shall not be liable for any losses or damages arising from the use of, or reliance on, the information in the form of articles, letters or adverts within the magazine. The adverts are provided for convenience only. We do not sponsor, endorse or otherwise approve of any information or statements appearing in the magazine. The editors are not responsible for the availability of, or the content located on or through, any advert.



