

<b>Bus Service 18 Tuesday &amp; Friday</b>	<b>Lt. Wilbraham To Newmarket</b>	<b>Newmarket to Lt. Wilbraham</b>
Little Wilbraham, Manor Close	<b>09.30</b>	<b>14.30</b>
Great Wilbraham, Church St.	<b>09.35</b>	<b>14.25</b>
Fulbourn, Six Bells	<b>09.40</b>	<b>14.20</b>
Fulbourn, Bakers Arms	<b>09.45</b>	<b>14.15</b>
Teversham, Ferndale	<b>09.47</b>	<b>14.13</b>
Teversham, Marshall's Close	<b>09.50</b>	<b>14.10</b>
Newmarket Road, Park & Ride	<b>09.55</b>	<b>14.05</b>
Newmarket Road, Park & Ride	<b>10.00</b>	<b>14.00</b>
Teversham, Marshall's Close	<b>10.05</b>	<b>13.55</b>
Teversham, Ferndale	<b>10.08</b>	<b>13.52</b>
Fulbourn, Bakers Arms	<b>10.10</b>	<b>13.50</b>
Fulbourn, Six Bells	<b>10.15</b>	<b>13.45</b>
Great Wilbraham, Church St.	<b>10.20</b>	<b>13.40</b>
Little Wilbraham, Manor Close	<b>10.25</b>	<b>13.35</b>
Six Mile Bottom, Tree Tops	<b>10.30</b>	<b>13.30</b>
Newmarket, Guineas Bus Station	<b>10.45</b>	<b>13.15</b>

<b>The Wilbrahams - Cambridge (via Park and Ride)</b>	<b>Monday- Friday</b>	<b>Saturday</b>
Six Mile Bottom, London Road	<b>06.58</b>	<b>07.58</b>
Little Wilbraham, Manor Close	<b>07.04</b>	<b>08.04</b>
Great Wilbraham, Carpenters Arms	<b>07.08</b>	<b>08.08</b>
Cambridge Drummer Street D2	<b>07.42</b>	<b>08.42</b>
Cambridge Drummer Street D1	<b>17.39</b>	<b>17.39</b>
Great Wilbraham, Carpenters Arms	<b>18.13</b>	<b>18.13</b>
Little Wilbraham, Manor Close	<b>18.17</b>	<b>18.17</b>
Six Mile Bottom, London Road	<b>18.23</b>	<b>18.23</b>

#### **Disclaimer**

While every care is taken in preparing the content of this magazine, the editors disclaim all warranties, expressed or implied, as to the accuracy of the information in any of the content. It also (to the extent permitted by law) shall not be liable for any losses or damages arising from the use of, or reliance on, the information in the form of articles, letters or adverts within the magazine. The adverts are provided for convenience only. We do not sponsor, endorse or otherwise approve of any information or statements appearing in the magazine. The editors are not responsible for the availability of, or the content located on or through, any advert.

Printed by Burwell Community Print Centre

<b>Contents</b>	<b>Page</b>
Public Service Contact Details	4
Editorial	5
Letters	6
Well-brahams	8
Leslie Fabb	9
Stephen Harmer	11
Escaping the Horrors	12
War in Europe	15
View from the Garden	17
Down to earth	17
Wilbrahams Causewayed Camp	19
Farmer Kiddy	21
Coronation Celebrations	22
Bottisham Medical Practice	24
Wilbrahams Collection	25
Memorial Hall	27
Social Club	30
Vegetables Flower and Produce show	38
Spud in a Bucket	40
Little Wilbraham and Six Mile Bottom PC	41
Gt Wilbraham PC	44
Claire Daunton	47
Choir	50
Untold Stories	52
Winter Wonder Walk 2022	53
Bell Ringing	55
Bridge Club	55
Johnson Bede Lane Trust	56
Velvateen Rabbit	57
Swifts	58
Photographic Group	59
Wilbrahams River Protection Society	59
Mobile Library	62
Advertisers	65

## Public Service Contact Details

Emergency	Police, Fire or Ambulance 999
Community Support Officer	PCSO Julie Hajredini 101 ext. 7113441
The Surgery, Bottisham Mon-Fri: 08:30 am to 6.00 pm	Enquiries/Appointments : 810030
Fulbourn Health Centre Mon-Fri: 08:30 am to 6.00 pm	Enquiries/Appointments : 880216
Out-of-hours / Urgent Care Cambridgeshire	NHS Direct 111
Anglican Church	Rev Alice Goodman 880337 Lay Minister: Steve Mashford, 882163
Baptist Church <a href="http://www.re-new.me.uk">www.re-new.me.uk</a> <a href="mailto:info@re-new.me.uk">info@re-new.me.uk</a>	Peter Wells, 812388, <a href="mailto:pandawells@cheerful.com">pandawells@cheerful.com</a> Rev Keith Morrison, 813055 Rev Alan Brand, 812558

### Great Wilbraham Parish Council

Chairman	Hilary Burton <a href="mailto:chairGW@wilbrahams.co.uk">chairGW@wilbrahams.co.uk</a>
Clerk	Samantha Chambers-Turner 07369 248998 <a href="mailto:clerkGW@wilbrahams.co.uk">clerkGW@wilbrahams.co.uk</a>

### Little Wilbraham & Six Mile Bottom Parish Council

Chairman	Dave Humphrey 07775 764 988 <a href="mailto:chairLW@wilbrahams.co.uk">chairLW@wilbrahams.co.uk</a>
Clerk	Hayley Livermore 07725080631 <a href="mailto:clerkLW@wilbrahams.co.uk">clerkLW@wilbrahams.co.uk</a>

County Councillor	Claire Daunton 07905473395 <a href="mailto:Claire.Daunton@cambridgeshire.gov.uk">Claire.Daunton@cambridgeshire.gov.uk</a>
District Councillors	Carla Hofman 01954713000 <a href="mailto:Cllr.hofman@scambs.gov.uk">Cllr.hofman@scambs.gov.uk</a> Graham Cone 07595361285 <a href="mailto:cllr.cone@scambs.gov.uk">cllr.cone@scambs.gov.uk</a> John Williams 01223 880940 <a href="mailto:john.williams@cambridgeshire.gov.uk">john.williams@cambridgeshire.gov.uk</a>
MP Lucy Frazer	<a href="mailto:lucy.frazer.mp@parliament.uk">lucy.frazer.mp@parliament.uk</a>

Photos by Chris Fell, Martin Gienke & contributors

## List of Advertisers

Advertiser	Page
Andy's Fulbourn Garage	60
ColourFence Cambridge	63
Ernest Doe	36
Fisher Carpets	31
Fulbourn Cat Sitting Company	29
Good Technology	26
J & J Drake	61
Healthcare Homes	64
M&I Healthcare Solutions	51
My Village Handyman	33
Pilates	29
PRE Heating Services	57
Rothwells	26
Secure Storage	61
The Hole in the Wall	29
Tutor	26
Wilbraham Boiler Services	31
Woodland Wishes	34

### Wilbrahams' Warbler Editors

Caroline Bird  
Email [Carolinebird17@gmail.com](mailto:Carolinebird17@gmail.com)  
Mobile 07870-645942  
Martin A. Gienke  
Iceni Cottage, 46 Church Street, Great Wilbraham, Cambridge CB21 5JQ;  
Tel 01223882426 : email [martin@gienke.co.uk](mailto:martin@gienke.co.uk)  
John Torode  
7 High Street, Little Wilbraham, Cambridge CB21 5JY  
Tel 01223812059; 07886103132 : email [johnboy\\_torode@hotmail.com](mailto:johnboy_torode@hotmail.com)

### Advertise in the Wilbrahams' Warbler

4 issues per year

Spring (March), Summer (June), August (September), Winter (December)

Over 500 copies distributed to

Great Wilbraham : Little Wilbraham : Six Mile Bottom

Rates per issue : Full page £43.00, ½ page £27.00, ¼ page £16.00



## A warm welcome awaits you at Home Close

At Home Close, we believe our **dedication to exceptional care** makes us stand out from the crowd.

Our **attentive and thoughtful staff** are committed to looking after your family like they would their own, catering to their every need and supporting them to enjoy later life to its fullest potential.

We offer the highest standards of care where dignity is respected, where talents and interests are encouraged. With a range of **residential, nursing and dementia care** on offer, Home Close is the ideal choice.

Home Close Care Home, Cow Lane, Fulbourn, Cambridgeshire, CB21 5HB

For a friendly chat with  
one of our advisors

Call 01206 646646

[www.healthcarehomes.co.uk](http://www.healthcarehomes.co.uk)



## Editorial

Welcome to the Spring edition of The Warbler. We have another packed issue for you to read at your leisure.

Since our last edition there have been some changes in our editorship, John Bramwell has decided to step down as an editor. He gave a great deal to the quality of the Warbler and his work effort and expertise is much appreciated. He will be sadly missed. He has written a letter explaining his reasons. I can only hope that we can carry on the good work he has done for the Warbler. I hope you find that the layout has not changed too much.

As a result of John leaving, we have been on the hunt for a new joint editor and I'm glad to say we have found someone. Caroline Bird has kindly offered to do the advertising and financial side of things. She is planning to write a short piece about herself in the coming issue.

One of the first Ukrainians to settle in the village has written an article for us. We have split the article into two parts, part one is in this issue with part two following in our next one. It makes harrowing reading and tells of how his family fled from Ukraine to settle in Great Wilbraham with the help of the Wilbraham's Refugee Support Group

The Village Show is fast approaching. If you wish to take part there is a pull out in the centre of this issue. There are over seventy categories (see centre pages for the full listing) So get your thinking caps on. As part of the show there's the return of the spud in a bucket competition. There's an article showing you what to do and where to get your spud from

There are letters and tributes to Leslie Fabb and Stephen Harmer who were both known and treasured throughout the villages

Following on from our previous edition when Nick Frankau was interviewed by John Tanburn, Nick managed to convince his wife, Eve Frankau, to be interviewed, She talks about having Multiple Sclerosis and its affects not only on her but also the rest of their family

We also have an account from the archives about Kazek Goryn shared by Tony Goryn. Kazek wrote about the horrors of war and how people are displaced from their homes fleeing to foreign countries as refugees.

Alex Shlakov is also talking history but in his case it is 4500 year old history suggesting that there was a settlement within the Wilbrahams back then.

We have reports from both Parish Councils as well as our County Councillor, Claire Daunton. The Parish councils talk about Feasts and coronations As always we would like you to send us any reports from clubs you have an interested in as well as letters and articles of interest and pictures

John Torode





## Mobile Library Schedule change

The mobile library run by Cambridgeshire Libraries is a fantastic service, especially for our villages. It calls at Great and Little Wilbraham and Six Mil Bottom and carries up to 3,000 items of stock including fiction, non-fiction, large print, books on CD & cassette and books for children of all ages.



You can request books/cassettes/CDs/DVDs. We have access to all the books in Cambridgeshire Libraries so you can also request books online to collect from the mobile Library on the next visit. Books are issued for **5 weeks**, and you can renew for up to three months. Any books borrowed from the Mobile Library can be returned to any other Cambridgeshire Library and you can return books from other libraries to us, so no need to worry about missing the due date. They can also be renewed and ordered online. Ask onboard for your 'PIN' to get you started.

Unfortunately, there are overdue charges for items borrowed from mobile libraries only apply after 15 weeks. When you have missed three visits.

Mobile Libraries are now welcoming readers onboard in family groups, with usual social distancing guidelines. They can also select items for you at the door if preferred.



All vehicles have a lift for wheelchair users or those who find stairs difficult.

On the bus route for our villages Rachel Levitt provides a friendly welcome and is happy to help with your selection and the other services which are available.

And there are a variety of other valuable services. Replacement hearing aid batteries, sell stamps and reading glasses are available. Your old used batteries can be collected for recycling too. Replacements for walking stick nubs of three sizes are a recent addition.

It's a very valuable service for villages and needs to be supported. From March the schedule will change for Six Mile Bottom. The mobile library visits on the fourth Thursday of every month: So the next visit is on 23th March. For more dates and times see page 32

Martin Gienke

## Dear Editors

A big thank you to the Well-Brahams committee for the coffee mornings they have put on in the hall for the village. My friends and I have enjoyed a wonderful selection of cakes to go with our coffee, and had great fun playing games and meeting with other people. It has been much appreciated and may it continue.

Bette Armstrong

Dear Editor,

Thank you to all Great Wilbraham residents who supported our Cantilena Concert 'O Magnum Mysterium' in St Nicholas Church before Christmas. The church was beautiful and welcoming, and in the company of our friendly audience we had a lovely evening of singing followed by wine and refreshments.



Thank you to all who gave generously to causes close to our hearts. We have made donations of £75 to our group supporting Ukrainian refugees in the Wilbrahams, £75 to Cambridge Emmaus, a charity that offers home, work and personal support to a community of formerly homeless people at Landbeach, and £50 to St Nicholas Church – in part to recompense them for use of a lovely kitchen and socialising area and winter heat!

The choir loved St Nicholas Church and the friendliness of our village and, I am sure will wish to return soon. If anyone wishes to join this small friendly choir – we are especially short of men! – please contact either of us.

Hilary Burton and Chris Fell  
hb384@cam.ac.uk  
[chris.fell@me.com](mailto:chris.fell@me.com)

Dear Editors

I would like to bring villagers up to date on the campaign for a zebra crossing outside the school. The June meeting of the parish council agreed to progress this, but there was a pause during the summer. However, the new parish council has taken up the issue, and plans to have meetings with the school, parents and other interested parties in the near future. Contact with Cambridgeshire County Council's Highways Department will be essential in looking at a positive solution to the issue.



With the return to school after the summer, the difficulties of crossing the road outside the school confirms that the problem not only remains but continues to grow with the increasing volumes of traffic and the size of the vehicles. Much as it may look like it, that traffic-calming narrow point on the road is not a pedestrian crossing. Traffic has priority. The result is confusion. Some drivers stop due to the ambiguity of the right of way to let children cross, but not all drivers do. Near misses between pedestrians and vehicles continue to happen. Hope to be able to give you further updates in the near future.



Andy Martin



## Well-brahams's Spring Update.

We have been having warm mornings throughout the winter. We have three more to go if you haven't been able to come yet

feel free to just pop in or spend longer with us. These have proved very successful with up to 40 villagers per session popping in for coffee, cakes and soup. The most popular activity has been playing games - board games; dominoes; crib and discovering new fun ones. Indoor curling has proved the active game of choice for children and our more mature attendees.



This spring we will have a volunteer working session in the orchard pruning and generally tidying up. We're planning on a Saturday hoping more people will be able to help. It's a fun morning and isn't physically arduous. Publicity with details will be out nearer the time.

We are planning two more sports activity days with chill time in the Easter holidays. Look out for information, posters/Facebook/Well-brahams website and the village website.

## Secure Self Storage

Simple, Safe and Secure Self-Storage for your Business or Home

Personalised entry with unique key fob

Extensive 24hr CCTV

Convenient vehicle access to all units for easy loading and unloading



Please call 07841 930065 or email [admin@camstorage.co.uk](mailto:admin@camstorage.co.uk)  
[www.camstorage.co.uk](http://www.camstorage.co.uk)



# J&J DRAKE



## Fully approved Electrical Contractor

All Work Certificated in Accordance with NICEIC

Free no obligation quotations

All aspects of electrical work undertaken such as re-wires, Electrical condition Reports, maintenance calls, New build Installations, Industrial and Commercial Installations

However small you may consider your job it will be treated with the same attention to detail as every one of our jobs.

## Your Local Electrician

Unit 24 Hall Barn Road Industrial Estate, Hall Barn Road, Isleham, Cambridgeshire, CB7 5RJ

Contact us on; 01638 781567 / [enquiries@jandidrake.co.uk](mailto:enquiries@jandidrake.co.uk)

limit future abstraction and slowly reduce the licenced volumes. This is being achieved through a long-term plan being developed by Water Resources East. This involves a water pipeline from Lincolnshire, water transfers into our region and the creation of a Fenland Reservoir to provide alternative sources of water. The WRPS has been involved in commenting on these proposals as well as trying to improve the situation of our local river in the face of increasing water demand as Cambridge expands.

This year will see a new noticeboard (funded by the Common Rights holders) near Hawk Mill Farm providing information on the society and the river including wildlife sightings. In January we have already seen foxes, muntjac, deer, fieldfares, linnets and various warblers along the river banks. As part of the ongoing effort to protect the river we are testing and deploying some monitoring equipment that will improve the ability of the EA to understand our river and its health.



If you would like to help protect the river and its wildlife, we are always keen to welcome new members and there is more information on our website – use the adjacent QR code or go to [thewrps.org](http://thewrps.org).

David Lomas




---



**ANDY'S Test Centre**

---

**A SERVICE YOU CAN TRUST**

---

**MOT Testing, Servicing & Auto Repairs**

Unit 3, Station Yard, Wilbraham Road  
Fulbourn, Cambridge CB21 5ET

**Tel: (01223) 880747**

We are also planning a nature activity event for young children, again look out for the usual publicity. We wish everyone a healthy spring and Easter.

## Remembering Leslie Fabb

Everyone knows that Leslie was an extraordinary man. There aren't many men in this world who are brave and resilient enough to wear shorts all year round!



Born with Cerebral Palsy, this condition added a range of challenges to his life, but he never complained. Instead, he set himself goals. A young, determined Leslie, set himself the difficult physical challenge of being able to walk when he reached five years old. At aged 5, Leslie achieved his goal of walking unaided. When young, he was shy and hid when visitors called around. But with age came confidence. Leslie enjoyed trips down to the Carpenters Arms with his brothers, Tony, and Derek. They would take their own music with them because the pub didn't have a jukebox. Following that,

Leslie's passion for Country music grew.

His sister, Carole, told me she used to worry about leaving Les on his own when she was talking to other people at the Country music dances, but usually, he'd strike up conversations (mainly with the ladies!) and have a fresh drink in his glass by the time Carole returned.

Each time Leslie met up with Country Music duo, Merv and Maria, being deliberately ironic, Maria would say, "Here comes Trouble!" and the funny nickname stuck.

Although Leslie might have not been able to help with physical chores around the home, he was in charge of tasks such as making sure the electric meter readings were done, bills were paid on time, and checking the fuel level in the heating oil tank.

One of their neighbours, Peter Ludman, would always call Leslie the "Garden Foreman", as he gave instructions and suggestions to Carole while she busied away outside.

Steve Drake felt privileged to have a lifelong friend in Leslie, and he looked up to him. Steve remembers, as a young boy, going round the Fabbs' and sitting on Leslie's knee. Steve said, "Leslie would talk to me about all sorts of things...we spoke the same language, and I could



understand him”, despite others sometimes finding Leslie’s speech difficult to decipher.

Leslie once took Steve on a day out - not far - only to the allotment, but this was a treat for Steve, where Leslie taught him where and how to set the vegetable seeds. In later years, Steve and Leslie would catch up over a drink in the lounge bar at the Carpenter’s Arms.

Since Les passed away, Carole has been flooded with cards and messages from friends, showing how loved and respected he was by so many people.

Rosie and Rob White said, “He was such a lovely man and a true gentleman. It was always such a pleasure chatting to him and having a chuckle”.

Dru and Tony Goryn said, “He was a remarkable man living with so many challenges”.

Maureen and Doug Leader said, “When he could walk, Leslie always loved to stroke Jemima, our dear donkey. She did not like men and always played up and was naughty...but with Leslie, she would let him get close and nuzzle him”.

Barry Bullen would always have a laugh and a joke with Leslie when he took him out in his taxi. Barry fondly remembers a time when they drove past a field full of pigs and Leslie lowered the window to shout, “Sausages” and, “bacon!”

Life was ticking along steadily for the Fabbs, when Covid-19 and Lockdown restrictions put an end to their beloved F. A. Double B. Country Music Club. This contributed to the poor health and well-being of Leslie and even more so to his younger brother Derek.

Derek’s passing came as a huge shock for the family. Leslie lost not only his brother, but his most cherished friend. He did not recover from such a loss.

Kidney stones made it uncomfortable for Leslie to sit upright, so, sadly, he became confined to his bed for 8 months. Yet he still didn’t complain about his situation; greeting visitors and asking them how they were; always thinking of others and enquiring about their health and happiness.

Sarah Fordham



## Photographic Group

Since the last Warbler Was published, we have met once in January for a little practical photography - we practised tabletop photography with various lighting setups for people to try.

We will be meeting again in February after the closing date for the Warbler, but before its distribution when we will turn the meeting room in the Hall into a Portrait Studio, so we are hopeful that a few budding David Baileys will come along to learn a bit more about studio photography.



Everyone is welcome at these sessions which run about once a month on Tuesday evenings in the Memorial Hall.

Later in the year I hope to get a friend to run a Nature photography evening and we will also run a Know Your Camera session when we will hope to persuade you to put your camera into Manual Mode to show you how to get more out of your camera.



I am always keen to include Phone Camera users, so don’t hold back if you don’t have a complicated DSLR camera - you will be just as welcome. As an example, for our studio evening, we will have both lighting which will be fired by the camera, and also lights which will work with phones.

Elsewhere in this edition of the Warbler, you will find the subjects for the Summer show, so get out and get snapping!

## The Wilbraham River Protection Society

Some of you will have noticed that our river ran dry again during much of the winter following the summer dry period. At a recent meeting with the Environment Agency they admitted that their modelling indicated that abstraction near the Wilbrahams for public water supply (PWS), from the chalk aquifer beneath us, has a big impact on our river. They estimate that abstraction reduces groundwater levels near the springs feeding the river by at least 3 metres. Chalk streams are naturally porous so the groundwater level is key to sustaining flow. This effect is partially but not completely offset by the 1992 augmentation scheme that pumps water from a borehole at Dungate Farm into the river near Temple Springs and the Fulbourn Nature Reserve. To reverse this abstraction effect completely would require reducing PWS by an astonishing 90% - something unlikely to happen. The good news is that there is increasing recognition of the damage done to chalk streams in the UK by over-abstraction leading to plans to



## Swifts Return

Well before the next issue of the Warbler – I confidently predict around the end of the first week of May swifts will return to our villages from Africa where they have spent the winter. But how many will we see and enjoy this year? Their numbers in the UK have declined by 58% since 1995.



Swifts are very loyal to their nest sites, often in the eaves of buildings or under small gaps in roof tiles. Sadly many of those sites disappear when buildings are replaced or renovated; re-roofing in particular often destroys the small openings upon which the swifts depend.

There are swifts in Little Wilbraham and Six Mile Bottom, but my own observations are mainly in Great Wilbraham. There are many nest sites in use in a single roof in High Street, and active nest boxes in Church Street and Angle End. My own box has yet to attract swifts.

Two or three pairs of swifts nest each year in small spaces under the eaves on the North side of the church. The Church already has a Bronze Award under the Wildlife Trusts' churchyard conservation award scheme and wants to do still more for wildlife. A nationally known expert has visited the church to advise – and the Church Council now plans to put up a good number of new nest boxes under the eaves, i.e. between the rafter ends. It may also be possible to put some boxes in the Tower, behind the wooden boarding in one of the openings high up in the Tower.

Making and fixing the eaves boxes is straightforward. To increase the chances of attracting more swifts the plan is to play recorded swift calls from tiny speakers placed near the boxes. This often works (it has not yet done so for me!) but requires some ingenuity to get power up the eaves.

If anyone would like to help – in a practical way or financially – that would be wonderful.

Swifts make almost no mess and do no damage to buildings. They make good neighbours and it is easy to share our homes with them. If you are at all interested and want to find out more about where to buy (or MAKE) and site a nest box on your home, please get in touch with me – 882371 or [thetooveys@gmail.com](mailto:thetooveys@gmail.com). I would be very glad to hear from anyone who has swifts nesting in any of our three villages.

Nick Toovey

## In Memoriam Stephen Harmer

Stephen passed away on the 4th of December 2022 at Home Close Care Home in Fulbourn.

After recovering from a stroke 8 years prior, Stephen had been cared for at 20 Angle End by Marilyn for all that time, until the rapid progression of his unfortunate dementia required Dad to take residence there since the summer of 2022.

We were delighted to have so many from the Wilbrahams come along to a thanksgiving celebration for Dad's life at Fulbourn United Reform Church and the Wilbraham's Memorial Hall on the 14th of January and we'd like to thank all those who were able to come. The sentiments of so many well-wishers were appreciated for a life well lived and some intrigue at aspects of his life that many didn't know about...

Dad was born in 1948 in Clapham, South London. It was there that he was heavily influenced by the Boys Brigade at the local Baptist Church and after becoming a Christian as the result of many positive influences at the church, (not least of all meeting Marilyn at the youth group)! He became a Christian and continued in varied aspects of Christian ministry his entire life. His witness was never on a soapbox in the street but in service to others, which had such a big impact on his friends and family that his parents and brother came to faith as a result. In fact, Marilyn was baptised alongside his mother and father after witnessing the change in Dad's life!

Dad was a humble soul, and he was very open to other people's personal faiths and beliefs, but he would have been delighted to see so many of his friends and family celebrating his life in the church with some very rousing Christian hymns that meant a lot to him.

He was a bright spark and straight out of grammar school, after becoming a wages clerk, others soon saw he had potential for something more significant and so he studied hard and became a quantity surveyor, developing a successful career, with assignments both in England and Cyprus. His career thrived, and he was promoted to management, eventually becoming the HR director for the government's property services agency in Cambridge at Brooklands Avenue, where a major aspect of his work was managing the maintenance of American air bases in the local vicinity. This led to Dad acquiring some staggering negotiation skills after working with American Airforce Commanders, and as a teenager I experienced his artful way of saying 'no' in some of the nicest possible ways...

Dad was lucky enough to take early retirement in his 50s. He enjoyed the occasional commission to interview bright young things for management in the civil service. I always imagined him enjoying the role of a dogged inquisitor to see if they could cut the mustard.... In the nicest possible way). But he was

drawn into counselling and spiritual direction and his love for people is what kept him busy. He had a very wide range of hobbies (too many to mention, although it's worth mentioning he could often be mistaken for a seal on the North Norfolk coast). Dad was extremely active and out and about in the village on a very regular basis (whether it was walking, cycling or using his much-loved moped), right up until his stroke at the age of 65.

As Reverend Nigel Uden said at the Funeral. 'His has been a life of depth and breadth, but it has not been without pleasure and fun'. Dad loved his family and took immense enjoyment at being a dad and granddad. We will miss him greatly but take great comfort knowing that Dad's faith got him through some very tough times and there must surely have been a 'light' that he was very familiar with, at the end of life's tunnel.

This memorial has been about Dad, but it would be remiss of me not to underline the eternal gratitude my brother and our families have for our Mum, Marilyn, who has been a truly incredible example of grace, service and love when the going gets tough. Dad is able to leave a legacy of peace and serenity right up to the end because of her care, patience and deep devotion.

James Harmer

## Escaping the horrors of war in Ukraine Part I

*We spoke to the first Ukrainian family being supported by the Wilbrahams Refugee Support (WRS) group. Whilst Olena, her son Lev and mother Nika managed to reach the UK last year, they have only very recently been joined by Andrei. Olena still finds it difficult to talk about what she experienced before leaving Ukraine - so we asked Andrei about what life is like in Kyiv now. This is part one of Alexie's story.*

*Tell us about your life before the invasion.*

Both Olena and I are from Donetsk. I studied management there and Olena trained as a lawyer. However, the 2014 Russian invasion [resulting in the annexation of Crimea] was our first war and we lost everything: our home, our jobs, our friends. We left everything and moved 700km to Kyiv to escape the Russian attack. We never returned because the local regime did not allow us to enter the Donetsk region.

We arrived in Kyiv with one suitcase, a car and enough savings to pay for two months of renting an apartment. Initially we lived in a hostel to save money while I tried to find a job. It was hard. Sometimes we didn't have enough money for food; but we slowly managed to rebuild a life in our new city, Kyiv. After many months, I got a job where I worked for eight years. Olena worked as a solicitor and in 2017 our eldest son, Lev, was born.

Lane Trust is a valuable asset beyond its' monetary funds as it strengthens our community across the year.

We currently have 6 members and would really like a Six Mile Bottom representative. Please do note the Trust does not cover Great Wilbraham, but we are in the process of applying to the Charity Commission to enable us to support projects in all 3 villages, specifically to support the school and other shared facilities. Currently our terms dictate that our awards/ grants are made to individuals rather than projects.

People can nominate others or themselves for support. In general, a grant awarded to any individual is £150. Where expenses are to be covered receipt of payment is required. Please refer to the JBL flyer posted on the Wilbrahams website, our current Trustees are Adel Helmy, Duncan Wells, Juliet Carter, Guy Mulley, Holly Tilbrook, Karen Ostefeld, and Alice Goodman. We are all happy to receive your questions or applications. Our email is [JohnsonBedeLane@gmail.com](mailto:JohnsonBedeLane@gmail.com) We process all applications and correspondence in confidence. The history was taken from <https://www.british-history.ac.uk/vch/cambs/vol10/p331>

Karen Ostefeld

## The Velveteen Rabbit



A Spinning Wheel Theatre production of this much loved Children's story The Velveteen Rabbit is coming to St Nicholas' Church, Great Wilbraham on Saturday 18th March at 3:00 pm. Entry is free and refreshments follow the show. All are welcome, from the very young to the very old.

For more information contact [jackiebeadsmoore@icloud.com](mailto:jackiebeadsmoore@icloud.com) or tel: 880889



**P.R.E. HEATING SERVICES**

Registered Heating and Plumbing Engineers



Oil and Gas Boiler Servicing, repairs and installation

Fully guaranteed : Free quotations

Contact Phil Evans on: 07500 800441 or 01638 721343 :

[preheatingservices@gmail.com](mailto:preheatingservices@gmail.com)

## Johnson Bede Lane Trust

Back in the 1500s a charity was set up by Richard Johnson to provide financial support to the poor of the Parish of Little Wilbraham and Six Mile Bottom. Richard Johnson was a parish rector who throughout his lifetime offered support to villagers by paying their taxes, giving them land, building alms houses and re-investing rent payments for the benefit of the village. In 1614 poor families were given bread at Easter, and Johnson's 'Town Money' was also used to pay for church repairs. The Johnson Trust supported 'the sick'. In addition to bread, the poor were given turf, clothing, calico and coal. As early as 1883 the Trust allocated funds to support education. In the 1900s an allocation was also made for Addenbrooke's Hospital.

Back in 1829, the then rector built 2 cottages as alms houses to the north of the church, these were known as the Bede Cottages. When these were later sold in or around 1981 the funds from the sale were combined with a separate 'Relief in Need' charity which had previously been established by another past rector, Erasmus Lane.

Today we have a combined charity, Johnson Bede Lane (JBL) Trust

The work of the Trust continues, very much in the way of the charities initially established in the 1500s and 1800s.

Today we do not give people bread or calico, but we do give gifts at Christmas to provide cheer for those facing difficult situations and financial hardship. We do not give coal, but we do give winter fuel grants to those needing to keep especially warm or people in the villages who might struggle to pay energy bills.

We also support those undertaking education, helping to fund books, travel and equipment. Over the past few years we have supplied uniforms, work boots, laptops and bus fares to enable young people in our villages to achieve educational and personal progress

achievements. We have awarded grants for medical equipment in the home and to cover expenses incurred to support health care. At Christmas children have received toys/ books/educational gifts, others have received biscuits, local honey and hyacinths to show that they are thought of and cared for. The Johnson Bede



After 8 years, we were a happy family and had rebuilt a life where we could live, work, rest and help other people in need. I played 5-a-side football and enjoyed fishing. Olena is a great mum – and loves spending time with Lev and our baby, Max (he was born later in UK). And Lev is obsessed with Lego! His room in Kyiv is virtually made of Lego. But on 24th February last year life stopped. And since then, there has been no winter, no spring, no summer, nothing. Nothing but fear, horror and tears.

*What happened on 24th February 2022?*

We were woken at 4:30 am when my mother-in-law phoned, saying "It's begun". She lived outside Kyiv and was desperate for us to join her in the safety of the countryside. Olena didn't believe her and told me to see what was happening outside. Up and down the road I saw people packing their cars, ready to escape if the missiles arrived.

Olena frantically packed a bag with the most necessary things, mostly Lev's, because no one knew what was happening or how long we would be gone. Lev woke up: he was scared and said he did not want to leave his room (or his beloved Lego). We went to Olena's parents and there was complete chaos everywhere. There were huge traffic jams on the roads, with queues several kilometers long at gas stations. Many were simply closed due to a lack of fuel. There was no food or water in the shops. People were just walking with suitcases in all directions. We stayed for many weeks as it was safer there. Relatives from Irpin, a neighbouring city, visited us with their young child: a rocket hit their house half an hour after they had decided to leave. It's very scary when it's so close; you understand that life comes and goes in a matter of minutes. Kyiv became more and more dangerous every day. Airplanes were flying very low above us, the windows in our house were trembling from explosions, even though rockets were landing 10km from us. Lev was terrified, like all of us.

We decided to leave Kyiv in the direction of west Ukraine. We loaded food supplies into the car and then drove off. But there was nowhere to go. Western Ukraine was calmer, but there was no lodging for nights available anywhere as everyone was fleeing the rocket attacks further east. And our journey was slow: a night-time curfew meant we could only drive during daylight hours and, even then, military checkpoints caused big traffic jams on the roads and there was no gas anywhere. The air raid alarm (siren) often sounded and we'd have to stop and look for shelter. We saw cities, warehouses and military bases burning after missile attacks.



Eventually, we reached relatives in western Ukraine and stayed there for three months. But after this, it also became dangerous when rockets began to fall all over Ukraine. Olena was eight months pregnant and we knew that it would be very dangerous to give birth there; all hospitals and government facilities were at gunpoint and many had been bombed. So we made one of the most difficult decisions in our life: Olena, her mother and Lev had to leave. As soon as we left, to travel to the UK, a rocket hit the house (photo above) we had been staying in, almost completely destroying it. We were just lucky.

Alexie Kulakova

[Editor's note Alexie continues his story and journey to Wilbraham in the Summer edition of the Warbler.]

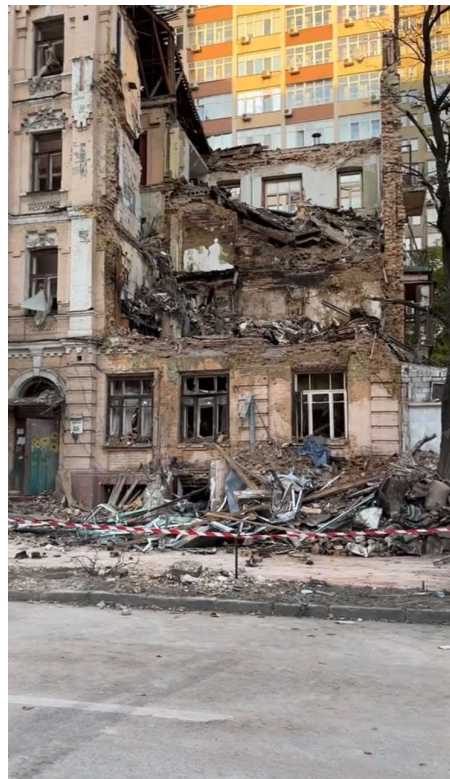
### From the Wilbraham's Refugee Support Group

#### Can you help?

Alexie's account of life in Ukraine following the Russian invasion last year, with its passing reference to the first in 2014, is both modest and understated. In common with so many others, the Kulakovs have suffered unimaginable disruption to their lives and the loss of so much of what we all take for granted. The 'Wilbrahams Refugee Support (WRS)' group has been providing assistance to this, our first refugee, family since they arrived in Great Wilbraham in November. We intend to help others and also to provide assistance to local households who volunteer as "host families" under the Homes for Ukraine scheme.

WRS has received many pledges of support from people who responded to our first appeal: both financial donations and practical offers of assistance. These have enabled us to set up the organisation not only to help refugees progress from staying with host families to living independently, but also to assist other residents who would happily act as hosts if only they had time to meet the refugees' needs - particularly in the first few weeks and months after their arrival in the UK.

If you think that you and those with whom you live could host a single refugee or even a couple or a family, please contact us. We can support



## Bell Ringing at St Nicholas'

Of our three churches only that in Great Wilbraham has a useable set of bells which vary in date from 1709 to 2008 – six in all.



Our ringers (male and female) come together from all three villages and elsewhere – our facilities are excellent. Most of us are relative newcomers to Ringing but we have a brilliant tutor, and we learn also from other experienced ringers who sometimes join us for our practices.

We are getting better! We used to say that if you could hear some good ringing

here, it had to be a visiting band of experienced people (our Tower is quite popular with visiting bands). But we may now surprise you. We are learning new routines, called "methods" so listen out for us, especially over the Coronation weekend!

We ring for two Sunday church services per month. We usually have just enough ringers available, but we would love to welcome new people to learn this special and ancient skill. Absolute beginners welcome – and it is less physically demanding than you might think. If you are even slightly tempted to try it, please come along on a Thursday from about 1930 – or email our Tower Captain Peter Sims - [ptrs28@googlemail.com](mailto:ptrs28@googlemail.com)

Nick Toovey

## Wilbrahams Bridge Club



Bridge clubs did not meet face-to-face during the pandemic and it has taken some time for them to get going again. We are a small club that is always looking for new members. Happily, we now have at least two tables at every session and once have even had four and a half tables. After the pandemic even well-established clubs were down to three tables but as time has moved along they have gradually increased in numbers and we are hoping to do the same.

We have been lucky to have some new players who have played bridge elsewhere to a high standard and who are very willing to give advice when it is asked for.

Please do come and join us if you want to play. We meet on the first and third Wednesdays in the month and you are welcome to come without a partner.

Di Raikes [raikswilb@btinternet.com](mailto:raikswilb@btinternet.com) Tel. 01223881065

On each day from 1st to 24th December, at least one decorated window could be visited by winter walkers in Great or Little Wilbraham and what a fantastic variety of festive ideas was put on display by local residents and businesses. Ideas both old and new lit up each display – it was amazing to see just how artistic some of

our neighbours really are! A magical winter scene with beautiful outside lighting attracted the most votes this year and deservedly won Ellie Evans a voucher from Shoegarden. Images of the complete artwork, as well as those of other winter windows, can be viewed on the village web page [www.wilbrahams.co.uk](http://www.wilbrahams.co.uk)



Popular also with voting walkers was another starry display in Little Wilbraham designed by Emily Lane on 2nd December (warm refreshments and baked treats also attracted visitors no doubt!) and very clever use of many little handprints helped to make up an impressive Christmas tree and snowman display on 6th December – a great piece of work from the Wilson family.

Prizes draw entries came largely from children. ‘Yule love this Carps’, ‘Arctic Blast’ and ‘Mulled Wine Party’ were among the inventive winter words and phrases made up from the letters collected by entrants. Congratulations to Sophie Crocombe, Harry Goodchild and Zoe Cumming who all won some goodies in the draw.

As always there are many people to thank, in particular all the window decorators for your efforts; it was clear that many had spent a lot of time on their displays, and it made for another excellent Wonder Walk this year. Thank you also to those who generously donated prizes or items for this year’s chosen charity, Winter Comfort Cambridge, who were delighted to receive our donations. Thank you also to all those who braved the exceptionally cold weather to view so many windows – we hope you’ll agree it was worth it!

As noted last year, the number of walkers has declined from the first couple of years, despite the event concept still being widely commended and there being no shortage of volunteers to display windows. So we will once again look at how to continue the event in 2023 in a revised format which makes the most of the great effort put in by all who remain keen to participate.

Caroline Bird and the PTFA. Email: [wilbrahamptfa@gmail.com](mailto:wilbrahamptfa@gmail.com)

you with information, links to suitable families, help with the application process and, for those receiving refugees, with your own support group - providing a range of practical assistance. Alternatively, if you cannot make that commitment but would like to help in some other way, please become either a volunteer or supporter of WRS. Please contact Tim Page, the WRS Secretary, at 18 Church Street or by email at [tim21page@gmail.com](mailto:tim21page@gmail.com).

Tim Page

## Twenty’s plenty

The campaign for a 20 mph limit in Great Wilbraham is gathering pace and in order to show residents’ support the Transport Working group (TWG) is asking people to put 20’s plenty signs in their front gardens. We’re not allowed to put them on the verges or other Highways’ land. We are running low on our stock, but new signs are in the pipeline. There are also wheely bin stickers and bumper stickers available. Please contact Martin Gienke ([martin@gienke.co.uk](mailto:martin@gienke.co.uk) 882426), Andy Martin ([Anderw.martin08@btinternet.com](mailto:Anderw.martin08@btinternet.com)) or other TWG members if you can help.



## War in Europe – the Story of Kazek Goryn

*Occasionally someone from the village reminds me of my father’s life story. His name was Kazek Goryn. It was printed in the Wilbraham Warbler in the 90s and is taken from his first submission in February 1992. Reading it now, about 100 years after his birth in Poland, we can feel the horror of history repeating itself.*

Tony

“My wife Sybil and I often admire the view around us, saying how lucky we are to live in such an ideal spot in Great Wilbraham. We both have so many different memories. Sybil has more local memories because she has lived in the same village, now slightly improved, where she was born. She attended the same school as our children and grandchildren. We have spent a fair amount of time bringing our different experiences into harmony, improving our standard of living by working hard and pulling our weight together to the best of our ability. We had nothing to lose and a lot to gain.

I have often been approached by people asking me how I came to be here and saying that they would be interested to hear my story. As I find it difficult to talk about it I will try to explain it by writing.

I was born in 1918 in Eastern Poland. Most of us older generations will remember that it was the time of the First World War. The boundary that was agreed upon



between Poland and the USSR ran approximately one mile from our house. But the devastation of properties and the people had not been put right until much later. In the meantime, I was growing up and I realised that my parents were worried about the situation and about what was going on around us. Every night hundreds of people were escaping from Russia to Poland - not much different from what is going on today, seventy years later. Movement of refugees displaced from their homes by violence, maladministration and corruption inevitably lead to uprising and civil strife, or whatever words people may use to describe the miseries of war. We see it every day all around us brought to our front room from all over the world.

Let us go back seventy years when we had no television, when I was still too young to know what was going on. We were in the position of getting first-hand information because part of our house was let to a senior military officer who was responsible for inspecting border guards and for dealing with the refugees that flocked from across the border.

He once brought a sample of bread the refugees had with them. It was made of crushed dried vegetation such as beetroot, peas and so on, very dry and hard. People had to eat it to survive. I also remember every harvest time when lorries would bring men, women and children by the truckful from labour camps to gather and stack the corn near the border guard barracks on the other side for five years in succession, but the corn was never threshed and was of no benefit for the people. Eventually, someone set fire to it. Because it was so near to our home across the border, we could see clearly that no one attempted to put the fire out.

We concluded that since nothing belonged to the people, they were not responsible or willing to do anything and that the communist regime was responsible for everything that happened there. Such experiences opened my eyes.

I could not go to school until I was ten because there was no school, all schools having been destroyed in the 1914-1918 war. I left school when I was fourteen and eventually got a job as an apprentice stone cutter in the local granite quarry, which should have lasted five years. After two years I decided to volunteer to do my two years of national service in the army. With that out of the way, I could proceed with my apprenticeship.

I was eighteen when I joined the special force designed to rebuild bridges, roads and whatever needed to be done to repair the devastated country after the war. There was also special classroom education by qualified professionals each in their own subject and plenty of homework for the evening. Just as my service period was about to end the war broke out in 1939. Unfortunately, we were invaded from both the West and the East: Hitler



Nick: We have been in this village since 1988. The boys went to the village school and Bottisham Village College. Tom or “Tommy” played rugby for Shelford. Toby played football and cricket for Wilbraham. Ned was less sporty but had a lot of friends here.

Eve: I brought them up while practising law. How did I do that?

*Was the multiple sclerosis (MS) getting difficult then?*

Yes.

*Was it that that stopped you practising as a solicitor?*

Yes.

*Do you miss that? Did you enjoy the law?*

Yes. It was interesting, and there were the people.

*One of the worst things about the MS must be some social isolation?*

I had my sons. They made all the difference

Nick: . It was when Toby, the youngest, was two that it got worse. It was only then that we learned that intermittent MS could turn into a continuous version and that the slow, steady decline had set in. That would be about 1993.

*How do other people react to your condition?*

Not well. They tend to distance themselves.

*Perhaps they do not know what to say.*

*What would you like them to do?*

Come and say hello, with your name. The best people are children. They want to know what I am doing in that chair. They are in pushchairs and they want to know why I am. They are interested.

Eve is looking for more carers. Our phone number is (01223 880256).

*Thank you, Eve, for changing your mind and sharing so much with us.*

*John Tanburn*



## Wilbrahams' Winter Wonder Walk 2022

The Wilbrahams' Winter Wonder Walk once again, and for a fourth consecutive year, provided some wonderful window displays for all to visit over the Advent period in December.



## UNTOLD STORIES 29 Eve Frankau

*When I met Nick Frankau (Franko) for the last edition, his wife Eve declined to take part. I am delighted that she later changed her mind and consented to share her story. Nick chipped in to help her occasionally.*

My mother was matron of a children's nursery, so I was brought up in that. I went to a grammar school.

*Did you enjoy that?*

Oh yes. It was a lovely school.

*From there you went to Cambridge.*

*What did you read?*

I read geography to start with, but changed to law. Nick: She realised that geography did not tell her the way around Cambridge.

*Did you qualify and practise as a solicitor?*

Yes.

*What kind of solicitor were you? Were you dealing with trusts and wills, or appearing in court?*

Property law. Conveyancing. Mostly commercial property.

*Why did you stop doing that? Did Nick have something to do with it?*

Nick: You went on doing law after we had children.

That's true.

*You mention children. Let's backtrack. How did you meet Nick?*

Nick: We met at a party and had an argument.

*Begin as you mean to go on! How many children did you have?*

Three sons, Tom Ned and Toby, and two grandchildren.



the dictator from one side and Stalin, another dictator, from the other. No one wanted a war and everyone suffered from it. No one benefited except the arms dealers and politicians. We had just one choice: follow the Geneva Convention and not surrender to the enemy. As we faced the overwhelming odds, we had no other choice but to enter a neutral country with all our arms."

## A View From The Garden

Many of us gardeners are still reeling from the shock results of the cold snap last December. After a scorching summer, many plants took the opportunity to refresh their leaves in a mild wet Autumn until a dramatic drop in temperatures over a few short days caused a sudden defoliation. Going from plus 16 degrees to minus 13 was just too much for some. Frost-scorched plants have appeared everywhere, and the victims include many evergreen species that I had considered hardy. Hebes, Phormium, pittosporum, and salvias, to name but a few, have been badly affected. In other species like choisya and lavenders it seems to be chance that some have avoided the worst and others look very poor. Certainly many of the more exotic shrubs originating in Australia and other sub-tropical regions (so-called half-hardy perennials) appear to have been 'knobbed' by the conditions. After the dry, hot conditions last summer, I was admiring this ability to cope with the extreme conditions.

Gardens often appear scruffy at this time of year unless you have a swathe of snowdrops or aconites, and the temptation is to tidy up and remove the bushes that appear dead. But I'm not so sure. It may be best to wait a few more weeks to see if any of them will recover when Spring arrives. Similarly, for the first time that I can remember, the vegetable garden also looks like a disaster zone. Many of the leeks have been affected by leek moth, despite my efforts with a pheromone trap and a single insecticidal spray. I suspect that many of them had already been affected by the time I had set out the young plants. The frost caused some carrots to split but the parsnips were unaffected. My much-valued sprouting broccoli plants are now a heap of shrivelled stems waiting to be buried in the runner bean trench, but the surprise was the way the frost had affected the Brussel sprouts and broad beans. So, it seems that many of us will have the opportunity rethink our gardening strategy for the coming year.

Nigel Start

## Down to Earth on the Farm

Unusually this year we have had some winter weather, and by that I mean cold weather. Although unwelcome due to the high cost of most energy sources we heat our houses with, this hopefully has had the useful effect of controlling bugs and diseases in our gardens and on the farm – I'll come back to this.

Another of the downsides of the frosty period is that our wild birds and animals can struggle for adequate food and water. The deer on the farm were happily foraging in the cover crops (green manure) up until December 10th at which point around 10 days of at least -10° night temperatures turned these from delicious green to unpalatable brown. On December 9th I had been testing a new roller crimping machine on the farm which is designed to manage the vegetative volume of the cover crops and terminate some species, thus requiring less herbicide to ultimately finish the job off before spring sowing. It was very interesting to see the amount of yellow pollen on the tractor bonnet when I washed it and the crimper down before the machine's return to the dealer. This was from the flowers in the cover crop and would have helped sustain our wild bees and other insects through some of the winter hunger gap, flowers are very rare in December. The 10 acres of wild bird feeding area (WBFA) I plant here has been less productive than usual this year. This was down to the dry period last April/May when it is sown. The mixed seed-bearing species struggled to grow as they usually would, and the areas became dominated by weed species instead. Whilst weeds do produce some seeds, they offer much less diversity of seed types so the supplementary feeding of mixed seeds we do has had to be increased. For those that will not have seen my WBFA an example of one of these can be seen on the North side of Lt Wilbraham crossroads where the triangular field corner similarly planted has supported a large flock of "Little Brown Jobs" all autumn. It's been great to see their happy murmurations. (photo David Lomas) Spring seeding has started here as I sowed some heritage wheat in the frost, done then as the firm ground held the tractor from sinking in. I have also lightly tilled an area which will be sown to Wildfarmed spring wheat, see <https://wildfarmed.co.uk>. Wildfarmed was started by Andy Cato who was one of the early 2000s music duo Groove Amada. His interesting journey from music to regenerative farming can be found on the website, link 'Farmers'. The field has been tilled to help control the remaining cover crop and overwintered weeds. The supply contract stipulates no "cides" (cide - denoting a person or substance that kills). Therefore insecticides, are not used here anyway, fungicides and herbicides are off limits. The only difference between this crop and organic is that I can use an amount of synthetic nitrogen if deemed necessary by plant sap test analysis. Hopefully, the frosty spells of weather will have helped reduce the burden of bugs and diseases as I'll not be able to dip into the spray store (crop medicine



Another of the downsides of the frosty period is that our wild birds and animals can struggle for adequate food and water. The deer on the farm were happily foraging in the cover crops (green manure) up until December 10th at which point around 10 days of at least -10° night temperatures turned these from delicious green to unpalatable brown. On December 9th I had been testing a new roller crimping machine on the farm which is designed to manage the vegetative volume of the cover crops and terminate some species, thus requiring less herbicide to ultimately finish the job off before spring sowing. It was very interesting to see the amount of yellow pollen on the tractor bonnet when I washed it and the crimper down before the machine's return to the dealer. This was from the flowers in the cover crop and would have helped sustain our wild bees and other insects through some of the winter hunger gap, flowers are very rare in December. The 10 acres of wild bird feeding area (WBFA) I plant here has been less productive than usual this year. This was down to the dry period last April/May when it is sown. The mixed seed-bearing species struggled to grow as they usually would, and the areas became dominated by weed species instead. Whilst weeds do produce some seeds, they offer much less diversity of seed types so the supplementary feeding of mixed seeds we do has had to be increased. For those that will not have seen my WBFA an example of one of these can be seen on the North side of Lt Wilbraham crossroads where the triangular field corner similarly planted has supported a large flock of "Little Brown Jobs" all autumn. It's been great to see their happy murmurations. (photo David Lomas) Spring seeding has started here as I sowed some heritage wheat in the frost, done then as the firm ground held the tractor from sinking in. I have also lightly tilled an area which will be sown to Wildfarmed spring wheat, see <https://wildfarmed.co.uk>. Wildfarmed was started by Andy Cato who was one of the early 2000s music duo Groove Amada. His interesting journey from music to regenerative farming can be found on the website, link 'Farmers'. The field has been tilled to help control the remaining cover crop and overwintered weeds. The supply contract stipulates no "cides" (cide - denoting a person or substance that kills). Therefore insecticides, are not used here anyway, fungicides and herbicides are off limits. The only difference between this crop and organic is that I can use an amount of synthetic nitrogen if deemed necessary by plant sap test analysis. Hopefully, the frosty spells of weather will have helped reduce the burden of bugs and diseases as I'll not be able to dip into the spray store (crop medicine



## Are You Paying Too Much For Your Medical Insurance?

### Independent And FREE Advice

- **Switch to an alternative scheme** – If you are currently insured, switching to a competitor can mean *substantially lower rates*
- **Pre-existing conditions covered** – It is often possible to include pre-existing medical conditions currently covered by your existing provider
- **Improve your coverage** – We can frequently improve your cover whilst also lowering the cost of your premium
- **Complexities of different schemes** – In many cases, people are over insured – we can ensure you are covered with a scheme that meets your individual needs and requirements
- **Full cover for cancer treatment** – Many policies do not cover cancer in full – we are able to advise on your current level of coverage



For further information, please call Simon Lively at  
M&L Healthcare Solutions -

**FREEPHONE 0800 145 5838 or 07710 993990**

Email: [simon.lively@mlhs.co.uk](mailto:simon.lively@mlhs.co.uk)

quoting ref: Wilbraham

M&L Healthcare Solutions Ltd is authorised and regulated by the Financial Conduct Authority. (FCA Reference number 943748)



Newmarket Road from Quay roundabout down into the city and to possible changes to the Park and Ride site.

<https://consultcambs.uk/engagementhq.com/gcp-newmarket-road-23>

The sun is shining today, blue sky. But it started cold and frosty so perhaps good weather for potholes...

Claire Daunton

[Claire.daunton@cambridgeshire.gov.uk](mailto:Claire.daunton@cambridgeshire.gov.uk) 07905 473395

## The Wilbrahams' Community Choir



Please come along if you fancy a sing. We continue to meet weekly during term times on Thursdays at 8 pm in the Memorial Hall and sing for an hour. There are no auditions so simply turn up and enjoy.

We have two performances in the near future. On Sunday, April 23rd at 4 pm we are

planning a short concert with tea and cake in the Wilbrahams' Memorial Hall at £5 per person.

On Coronation Bank Holiday Musical Monday, May 8th we are planning to sing on the recreation ground at the Memorial Hall and the Tofties will perform too. This is likely to be between 3 and 5 pm.

Please look out for updates about both of these events on the Wilbrahams' Community website at [wilbrahams.co.uk](http://wilbrahams.co.uk).

If you would like to join the choir or have any related questions please contact Tony Goryn on 07751 281341 or [tonygoryn@icloud.com](mailto:tonygoryn@icloud.com) or Gill Humphrey our Choir Director on 07710 236207 or [gillianhumphrey@icloud.com](mailto:gillianhumphrey@icloud.com).

Tony Goryn, acting chairman

## The Top 12%

In 2017 the Warbler won first place in the National Parish Magazine awards in the A5 category. Since then we have won various awards in the Cambs Community Awards scheme sponsored by the Cambridge Building Society. With Covid CBS has not continued their scheme. However, we keep entering the national awards and continue to be in the top percentiles. This year we were 53rd out of 450 entries in the A5 magazine category or in the top 12% nationwide. Thanks go to all our contributors, photographers and fellow editors for their excellent work.

Martin Gienke

cupboard) to sort out any problems. This will be the first year of a three-year rotation with Wildfarmed, assuming I can make it work. Its attraction is the contract pays a premium for regeneratively grown crops which is unusual. To support a regeneratively farmed supply chain and sample delicious Wildfarmed bread do visit the Cambridge M&S store where it can be found on the top shelf in the bakery area.



Other recent activities on the farm include the completion of 130 mts. of newly planted hedges and trimming of existing established ones. This is left until after Christmas to give the birds time to consume the berries and must be completed by March 1st, nesting season. Workshop tasks include annual services on tractors and other machinery. Off-farm activities include meetings and conferences covering topical agricultural subjects such as the latest Department of the Environment Food and Rural Affairs (DEFRA) environmental schemes as well as the more formal business meetings and committees that I sit on. Whilst a few people will still "zoom" into these meetings if it reduces otherwise considerable travelling, most now attend in person as face-to-face is not only more productive/creative but they have an essential social element to them too.

Although we can't say that winter is over just yet, I hope like me you are appreciating the fact that it's now light after 5 p.m., a sign that spring is approaching fast.

David White, Hawk Mill Farm.

## Wilbraham Causewayed Camp

Many of us know of the Anglo-Saxon remains in our area, but did you know there is a site that is 4,500 years old, just around the corner? If you walk up the Common Drove from Station Road, just as you get to the left-hand corner near the Common, on your right is now an empty field. But once it used to be a settlement or a seasonal gathering place. First discovered by aerial photography, it was excavated in 1975-6 by the University, but was abandoned due to the death of its lead excavator, Graham Clarke. As the site is now a Schedule Ancient Monument, no new excavation has been attempted, but a paper published in 2006 surveyed and assessed the findings that remained unpublished. Called 'Total Archaeology' and Model Landscapes, this work can be downloaded from the Proceeds of the Prehistoric Society 72,2006, pp.113-162. The paper reviews an attempt to bring many of the departments at the University to work together at an analysis of the contents of the first, tentative trenches that were dug in only two seasons at the





site. Archaeology, Botany, Geology, Quaternary Research and Aerial Photography departments were involved, and it was hoped that, with the support of The British Museum, a much more extensive excavation could be attempted. The approaches were pioneering for the time, with a 'cascade system' that allowed deposits to be sieved, processed, and analysed. Bones were well preserved throughout, mainly cattle, (one gnawed by a dog!) along with some pig, sheep, deer and wolf. Complete timbers and a worked Neolithic plank came from the peat along with Neolithic seeds in the ditches. Finds on the site stretched from the Palaeolithic through to Anglo-Saxon times, so there has been a lot of activity there for thousands of years. Situated on a gravel knoll and originally by a lake, the two concentric circles of ditches were part of a wide pattern of the earliest evidence of landscape construction. Other camps at Etton and Haddenham were excavated later, but Wilbraham was noted for the density of finds, showing concentrated use. The trenches produced 4240 flint artefacts and 2590 pottery sherds, some of it decorated. The site was chosen as it provided nearby good quality flint, access to watering and grazing for cattle and to travel routes via water to the Cam and beyond. These sites may be more common than we realise, but next time you walk down to the Common, what you thought was an empty field is perhaps the village as it was 4,500 years ago!

Alex Shlakhov

managed decline. With very limited budgets we need to be smarter about what we do, where and when. <https://www.cambridgeshire.gov.uk/residents/travel-roads-and-parking/roads-and-pathways/roadworks-and-faults>.

It really is important to remember as well that the County Council looks after not just our roads and footpaths, but also the vital services of adult and children's social care, education, waste sites and other aspects of our daily lives. Making the budget stretch is a very serious business and we need fairer funding for our growth. <https://www.cambridgeshire.gov.uk/news/council-sets-its-20234-budget-but-makes-a-cross-party-appeal-for-a-fairer-funding-deal-for-cambridgeshire>.

I'm staying with holes. Sometimes one wishes they would swallow one up. This time water holes. Stories in the press about developments in and around Cambridge are numerous: the continuing expansion of the medical campus, with buildings devoted to cutting-edge science and medical care; the expansion of the various science parks or campuses. We live close to a 'world city' with work of international significance going on. Cambridge's population has grown by 17% in the last census period. People coming to jobs here need somewhere to live. But a major limiting factor is the availability of water. Digging a hole to find water in this area suggests that there is already a shortage and that this will become even more pronounced. Local councils, working with the partnership, 'Water Resources East', continue to talk to central government about the need for planning and funding of water supply. There is a proposed location for a new reservoir in the Cambridgeshire Fens situated north of Chatteris near the villages of Doddington and Wimblington, but more needs to be done. Water is going to be a continuing and increasingly important theme in the wider debate about housing and other developments.

And on that theme, again some facts, this time concerning the airport site. Part of the site is being built on at the moment. The development on land north of Cherry Hinton, now called by the developer 'Springstead Village' will eventually (over a 10-year period) consist of 1200 dwellings. When Marshall's gradual move to Cranfield is complete in 2030, then there will be another period of development for 7,500 homes (NOT 12,000 as has been said) with other facilities. In fact the projected additional housing numbers for the Local Plan that covers the period to 2041, being worked on by the City and South Cambs District, are now lower than before: only 2,800 houses will be added to what is already in the pipeline and been agreed.

Cambridge East, the area on our doorstep, will begin to look very different. This expansion will only work with improved infrastructure, better public transport (the better bus services we all need) and more accessible ways of travel. So, have your say on that by taking part in the final round of the Eastern Access consultation which is seeking comments on the detailed proposals for improvements to



It is proving to be a bumper year for potholes, as I am reminded both by seeing and hearing of them, worrying about them and working to have them filled and then properly repaired.

I can understand the reactions – both in person and of course on social media!

I believe some facts will help.

First, the climate: this year we had a prolonged spell of very hot weather in summer, followed by a wet autumn, then a very cold early winter (some nights at -9 or -7 here). This is what happened.

Second, maintenance: the funding for maintenance over the last decade has not kept up either with a

regular need or with the change in climate seen even in other recent years. What County Highways are doing is both dealing with the ‘pandemic’ of holes and putting in place robust long-term planned maintenance. With huge inflationary pressures (18-20% in some materials) and shortages, we have to be smarter in the way we work and make better use of new technology. We also need to have a much clearer idea of the size of the problem, so digital road mapping, logging and assessing are crucial to what comes next. Using new materials and knowing in advance where problems are likely to occur, will help greatly.

On the holes themselves, what has been done? On Christmas Eve, not long before the carol service, I put out two emergency calls. Potholes were patched and made safe though time was short and other call-outs beckoned: they will need to be repaired properly in due course. The same happened on 27th December: emergency call out and holes filled. In early January, the surface of Temple End was repaired. Holes have been filled in all our three villages. There are still more holes to be filled in various places. They will be done. Extra crews are out with large machinery for some areas and small machines – dragon patchers - for the smaller areas. In some cases three-way lights or full road closures are needed to allow for safe working, and they need written permission, so a longer wait. Local highways officers make regular visits to check on roads, but they rely on all of us reporting potholes when we see them, or indeed reporting a range of highway faults online. Below is the link to do so. The site explains clearly how to report a fault and what constitutes an emergency. Please do report. It helps. You can always let me know as well, by email or phone. We do not want to go on with



## Farmer Kiddy

I thought I would introduce myself; my name is James Kiddy.

In September, we took over the farming of Wilbraham Farms for the Hyde-Smith family having farmed Wilbraham Hall for the last 9 years alongside looking after the Stewardship ground at The Temple for the Wright family.

We are a farming family based in Balsham, which began with an acre strip owned by my grandfather in 1920, bringing us now to myself as the third generation who farms 3,400 acres at Yole Farm alongside my parents, as well as my son, Sam, who joined us this autumn.

We have a small flock of New Zealand Romney ewes, and a small herd of Pedigree Red Poll cows as well as the addition of store lambs which are brought down from a friend's Hill farm in Northumberland every autumn. They graze on the stubble turnips grown on the Wilbraham Farms, which helps with the ground fertility and soil structure.

We are great believers in conservation at the Yole and with this in mind, hedges are biannually trimmed during the winter months to allow birds to feast on the berries! Wild bird seed mixes are grown on various areas of the farms for winter feed for the small birds too. We have also incorporated grass margins to help the hares live in a safe habitat, and a grey partridge bird count takes place a twice year.

Our farm's cropping includes the following: Milling wheat for flour production, hard and feed wheats for biscuits and animal feed, malting Spring barley for beer and whisky production, feed barley for animal feed, peas for human consumption, beans for protein or human consumption, oats for biscuits, breakfast cereals and milk and sugar beet for sugar.

What have we been up to recently you may ask?

After a busy winter due to the weather causing some real issues together with the hot dry summer, going into the Autumn we were fortunate enough to have some of the best seed beds we could have hoped for. Drilling progressed well and the Autumn sown crops look well too.

November then came and we contended with rain, so much that we were not able to complete our Autumn spraying programme. We struggled to lift sugar beet due to it being so wet and on top of that struggled to plough and drill wheat behind the beet.

There is still quite a lot of winter ploughing to complete ready for the spring crops due to the very hard frosts we've been experiencing, as well as the several weeks of snow! The sharp frosts also killed off a lot of the winter turnip feed for the sheep, meaning that we have now run out of feed to graze the sheep on and so are having to feed them grain and silage.

By the time you read this article hopefully we will have made a start on the Spring drilling and the first application of fertiliser will have been applied.

Spring is just around the corner and the bulbs and buds on the trees will be starting to sprout, calving and lambing will commence too and put a smile on all of our faces!

James Kiddy



## Coronation Celebrations in the Wilbrahams

On May 6th King Charles III will be crowned in Westminster. This will be a time of great national celebration and pageantry and events will be staged in communities around all four nations to mark the beginning of a new era.

In the Wilbrahams we will mark this place in history with a series of events – celebrating our new King, rejoicing in the strength of our communities, building our commitment to

neighbours and meeting with friends old and new. Our villages will record this weekend as a moment in history and one that our children will remember for the rest of their lives.

The Parish Councils, Memorial Hall Committee and Church are planning a series of events. Each event will be available to all villagers.

Outlines include:

**Saturday 6th May**, evening: Little Wilbraham- Beacon Lighting.

LW&SMB Parish Council will be once again lighting the Beacon. The beacon will be lit and there will be refreshments, entertainment and fireworks on the Church green.

**Sunday 7th May, 9.30.** There will be a service at St Nicholas Church Great Wilbraham called Come and Join.

**Sunday 7th May**, afternoon: Great Wilbraham. The GW Parish Council is encouraging neighbours to get together and hold street parties in the afternoon. These can be held in large gardens or on shared patches of land - we are not envisaging street closures! We hope that all events will include something special for the children and that residents can visit various parties during the afternoon. There may also be some element of competition (e.g., best decorations). For streets without suitable patches of land, St Nicholas Church has offered use of the churchyard, or even the Church itself if the weather is wet! The Parish Council will help to

of the team of volunteers who will have the responsibility for setting up, maintaining and moving the signs, please contact the TWG at [hgvs.wilbraham@gmail.com](mailto:hgvs.wilbraham@gmail.com).

A page has been created on the website (under Councils->Great Wilbraham Parish Council->Parish Projects->Speed Monitoring) where we plan to share information from the speed awareness devices.

### Reduction in the Speed Limit

The Council is now seeking to reduce the speed limit within the village.

The argument for this is simple: the roads and pavements are too narrow, particularly north of the Mill Road/High Street 'triangle', there are too many cars parked on the main through route and the quantity and nature of the traffic has increased to the point where 30mph is just too fast. We know from the TWG surveys that the majority of residents agree.

In common with many other rural villages, we will apply for a reduction of the speed limit to 20mph. It is noticeable how many of us have already taken to driving at that lower speed, but the main benefit will be realised when commercial vehicles, including HGVs, are required to do so.

We will be required to demonstrate support for the proposed reduction from village residents. We will be circulating a survey sometime in the next few weeks. When we do so, please respond, whether you are for or against a slower speed limit.

### Contact us

We are always pleased to hear from residents – especially if you have ideas about how to improve things in our village. You can pick up our details on the Wilbrahams website, email us via our Clerk Sam Chambers Turner at [clerkGW@wilbrahams.co.uk](mailto:clerkGW@wilbrahams.co.uk), or just catch us as we walk round the village.

## Holes

### Claire Dauntton - Cambridgeshire County Councillor

'There I was / A-digging this hole / A hole in the ground / So big and sort of round it was / There was I . . . This Bernard Cribbins song from the 1960s is about a dispute between a workman digging a hole and Fred, a bossy character wearing a bowler hat who turns up and starts to tell him what to do. No prizes for guessing why the song has been buzzing away in my head in recent weeks; and I've spent some time thinking of who might play the role of Fred!

The difference between the holes in the song and 'our' holes is that one is deliberate and planned (hold that thought) and ours are not.



neighbouring houses, and the dead and dying elms at the bottom of Toft Way.

### **Highways Improvements**

The creation of 40mph buffer zones on Mill Road and Station Road will begin soon, with installation of ‘village gates’ on each of the 3 entry and exit roads. This is part of the successful 2022 Local Highways Improvement (LHI) application.

We are delighted that the village pub is open again. However, The Carpenters Arms’ success has created a problem, with some customers parking on the road outside the pub and on the bend into Church Street. This is highly dangerous, as traffic driving towards Little Wilbraham is forced into the oncoming lane on a blind bend. On occasions, vehicles - particularly HGVs and buses - have been unable to negotiate the corner, causing traffic to back up into both the High Street and Church Street. The Council’s Highways, Transport and Cycleways Committee (HTCC) was set up to look at matters such as this. Discussions with senior members of the Chestnut Group’s management team about ways to deal with this issue have resulted in more signs being put up, to encourage customers to park in the pub car park. Information about parking has also been improved on their website, and in emails sent to customers confirming restaurant bookings.

The best solution would be the installation of double yellow lines on both sides of the road outside the pub and around the corner into Church Street. This was therefore the subject of an application to the County Council, under their 2023 ‘Local Highways Improvement’ scheme. The Council is grateful for the work done by members of the Transport Working Group (TWG) in seeking residents’ opinions and collecting information. We now hope that the County Council looks favourably on this application which, if successful, would see the lines being installed next year.

### **Speed monitoring devices**

The village has received a grant from a local company to pay for the purchase of 3 new speed awareness or ‘mobile vehicle-activated signs’ (MVAS). This is the result of an approach made by the TWG last year and forms part of the response to the ever-increasing number of vehicles using Great Wilbraham as a through-route. The signs are expected to be delivered shortly and will be used to remind drivers of how fast they are going. Observations made with the existing sign confirms that MVAS are very effective in slowing traffic. Training, coordinated by the TWG, will be provided in the village by the manufacturer; if you wish to become one

coordinate and hopes to offer small grants and possibly an element of competition.

If you would like to host or help with a street party in your neighbourhood, please contact Chris Page or Hilary Burton. All ideas and offers of assistance will be gratefully received – this will not happen without you!

**Monday 8th May:** Great Wilbraham. The ‘Big Help Out.’ Following ideas coming from Buckingham Palace the Monday Bank Holiday is promoted as a day for volunteering. The Parish Council hopes that people will be involved – either individually by offering to help friends and neighbours or as a group. We are currently deciding on a suitable project that we can do together - possibly a big clear out gardening or cleaning task – any ideas please let us know.

Monday 8th May: Great Wilbraham Memorial Hall. Coronation Concert 3 pm (refreshments available from 2 pm). The Memorial Hall and Recreation Ground Trustees supported by the Parish Councils will host a concert on the Recreation Ground for all residents of The Wilbrahams and Six Mile Bottom. The Tofties and the Community Choir will entertain us and there will be refreshments throughout the afternoon.

St Nicholas Church. Throughout the weekend the Church will be decorated with flowers and artwork. The Churchyard will be available by request for Street Party celebrations on Sunday afternoon.

None of these events will happen without the involvement, help and ideas of many village residents. Whether you are new to the village or one of the old hands, please contact us if you would like to be involved. You will be very welcome.

We are currently shaping our plans – please follow us for more information on the village website <https://www.wilbrahams.co.uk> or on Facebook – and via notices through your door!

Great Wilbraham Parish Council

Chris Page ([gwcllr.page@wilbrahams.co.uk](mailto:gwcllr.page@wilbrahams.co.uk))

Hilary Burton ([gwcllr.burton@wilbrahams.co.uk](mailto:gwcllr.burton@wilbrahams.co.uk)).

Little Wilbraham Parish Council

David Humphrey ([d.humphrey@microfocus.com](mailto:d.humphrey@microfocus.com))

Memorial Hall Committee

Emma Adams ([mail@emma-adams.co.uk](mailto:mail@emma-adams.co.uk))

St Nicholas Church

Lorna Carr ([l.carr879@btinternet.com](mailto:l.carr879@btinternet.com))

## News from Bottisham Medical Practice Patients' Participation Group

*"NAAFI Break"*

*ALL veterans are welcome to come along and meet like-minded veterans.*

*10 till 11 am at Anglesey Abbey Cafe. We meet on the first Wednesday of each month. Next date to meet is 1 March 2023. Come along, for a good old chin wag, meet new faces and feel connected within your local community.*

*Gary looks forward to welcoming you. He will be wearing a grey Help for Heroes T-Shirt.*

**The Pod:** This has been installed into the waiting room and is now hard-wired into the computer system and so will record results directly onto the patient's medical records. Issues with the results will flag up and triage will be arranged. The instructions should be easy to follow, but reception staff will advise a patient how to use it.

**Dispensary news:** The dispensary staff have altered how they process prescriptions since August. An audit has been completed to review the outcome of this change. Prior to August 14% of prescriptions were not ready within 5 working days of request. Now 99.8% of scripts are ready by the target 5 days. Those that are not ready are due to medication availability rather than anything we can change. Thank you for working with us during this period of change and hopefully our patients are now reaping the benefits of this work.

However, remember that for repeat prescriptions there is still a **5 working** day turn around so this does not include Saturdays and Sundays, which are non-working days. Please do not try and collect sooner.

**Staff:** A very experienced GP has joined the Practice following the retirement of Dr Stanton. Dr Shelley will be working Tuesdays to Fridays. Jo Graham has been appointed as operations manager for the practice. She replaces Helen our previous assistant to the practice manager.

**Physiotherapy available at the Bottisham Medical Practice:** We now have 2 physios available to see patients. You can book an appointment directly with Alex or Dominic for joint pains, backache and mobility problems without consulting with a GP first. Physios are able to arrange investigations and organise onward referrals where required.

**Appointments:** A gentle reminder that appointment slots are for 10 minutes per patient. If you feel you have more than one problem, you may request a double appointment. Please refrain from discussing medical problems of family members within your own appointment if the appointment is not booked for this reason, one appointment is required per patient. The British Medical Association

Together with Little Wilbraham Parish Council, we are changing our email provider, reviewing our website content, structure and delivery, and looking at how we can make use of the national Public Service IT infrastructure that is available to councils. We will also provide information on each of the Parish Councillors including photographs and contact details on our website.

We are preparing to trial an app called "Notifi", to see whether a smartphone-based utility could help the Council communicate with residents. We hope to report on the results of the trial in a few months' time.

We plan to create a business listing page on our website. If you live in Great Wilbraham and run a business that provides products or services, please contact us (James, Sam, Jens) with the following information:

Your business name

A brief description of the business

Contact details such as email, website

We will then create a listing for you for free on the Wilbrahams website.

We plan on refreshing the information every 6 months. The aim is to create a local marketplace so people can reach out to local businesses.

Please note that the intention is to create a business listing page; this will not constitute an endorsement of any of the businesses by the Council.

GW Parish Council Communications group contact details:

James [Gwellr.harmer@wilbrahams.co.uk](mailto:Gwellr.harmer@wilbrahams.co.uk)

Sam [Gwellr.dhaliwal@wilbrahams.co.uk](mailto:Gwellr.dhaliwal@wilbrahams.co.uk)

Jens [gwellr.kolind@wilbrahams.co.uk](mailto:gwellr.kolind@wilbrahams.co.uk)

**Trees and Biodiversity**

The Council has responsibility for various parcels of land around the village and is keen to look after these properly, in a way that enhances biodiversity and provides environmental benefits. As part of this, we are delighted to have appointed Nigel Start as our Tree Warden, with a range of responsibilities including keeping an eye on trees within the parish boundaries and working with our Parish Clerk to arrange any works that need to be done.

We have recently carried out maintenance work on trees in the Community Orchard that were having an impact on our fruit trees. We have also been working with the County Highways team to determine how best to manage the trees in Frog End, which are having an impact on the highway and

# Great Wilbraham Parish Council

## Our new Councillor, and training for our role

We welcome Jens Kolind as a Parish Councillor. Jens has lived in the village since 2019 and has strong links to the local area, with his wife's family settling in Duxford and subsequently Little Wilbraham. He was previously a Scout Leader and hopes to bring that expertise to the Council's engagement of the younger side of Great Wilbraham about important topics such as the Parish Plan.

All the councillors have undertaken a variety of courses over the past few weeks, including Code of Conduct training, Chairman training, Planning Application training and Councillor training.

## Farmers Markets

The Council plans to be present at the Farmers' Market as often as possible. Please come and have a chat about any issues that interest you and get an update on our work. The Markets begin again on 11<sup>th</sup> March. We look forward to seeing you there, in the sunshine!

## The Annual Parish Meeting (APM)

This year, the Annual Parish Meeting will take place on 30<sup>th</sup> March, starting at 7pm. Please join us for what will be an interactive evening, enabling everyone to find out what is going on in the village, ask questions and contribute ideas. We'd like as many people as possible, young and old, to attend and to express their opinions and concerns, whether about social needs, youth engagement, travel, housing, the environment or anything else. Our discussions, fuelled by some light refreshments, will provide a basis for developing our Parish Plan and programme for next year. Please put the date in your diaries.

## Coronation Weekend

The Parish Council is working with Little Wilbraham PC, the Memorial Hall and the Church on celebrations across the Wilbrahams to make this a memorable weekend. Please check out the details in our separate feature and get involved (See separate article for details).

## Communications

In reviewing how we communicate; the Council is looking at how improvements to our IT infrastructure might make us more efficient and provide opportunities to make sharing information with parishioners easier.

recommendation is for 25 patient appointments per day, but our doctors exceed this daily.

**What helps the GP?** It can be really helpful to have your own thermometer, blood pressure machine and oxygen saturation probe as if you are unwell a more rapid assessment can be provided, and you can monitor your improvement or deterioration on advice from the GP.

**Weekend and Evening Appointments:** These can be booked through our Practice for routine appointments, though they are only available at other local surgeries. Please see website <https://www.cambsgpnetwork.nhs.uk/gp-enhanced-access>.

**Walking:** There is a Wicken Fen Wellbeing Walk on Fridays 10-11 am. This is a regular, easy paced, sociable walk. They meet in the Visitor Centre at Wicken Fen on Friday morning ready for a 10 am start. The walk will be around 2 miles in length at a relaxed pace, taking approximately an hour. The Anglesey Abbey Health Walks are every Thursday leaving promptly at 10.00. The assembly point is behind the garden centre, by the bike shelter. The walks are fairly brisk, and last about an hour. The distance is about 3 miles.

**The Patient Participation Group:** We are looking for new members to join the committee. All patients of this Practice are eligible. Please contact our chairman as below to find out more information and how you can be involved.

**Regular Meetings:** The next meeting is Wednesday, March 22nd, 2023 at 1.30 pm. If you wish to join our Zoom meeting, please email our chairman at [s.j.gilson@btinternet.com](mailto:s.j.gilson@btinternet.com) who will send you a meeting invite.

**Annual General Meeting:** April 26th, 2023, at 1 pm on Zoom when we hope Dr Shackleton will be free to speak. If you wish to join in please email our chairman as above for an invitation.

*Bottisham Medical Practice Patients Participation Group*

## The Wilbrahams' Collection 2023

### A Call for Local Artists

Now that the chances of being locked down again are fading we are looking at another Wilbrahams Collection where we bring together some of the talented artists who live in and around the "Wilbrahams".

Last held in the Memorial Hall in 2020, a mix of eleven local artists displayed some fantastic examples of their work. Funds raised go to maintaining the hall so look out for more information.





If you missed the 2020 Collection here is the website with the artists who participated.

<https://thewilbrahamscolle.wixsite.com/thewc>

If you are interested in showcasing your work or participating in any way, then just drop us a line and we will get back to you.

[thewilbrahamscollection@gmail.com](mailto:thewilbrahamscollection@gmail.com)

The Wilbrahams Collection Team

**GOOD  
TECHNOLOGY**

355 Newmarket Road  
Cambridge CB5 8JG  
Tel: 01223 315076  
[sales@good-technology.co.uk](mailto:sales@good-technology.co.uk)  
[www.good-technology.co.uk](http://www.good-technology.co.uk)

**MULTI FUNCTION PRINTERS / COPIERS / SCANNERS  
FOR BUSINESS Tel: 01223 315076**

**Tutor**



Experienced tutor:  
Fully qualified former primary school  
teacher and home educator based in  
Little Wilbraham

Expertise in:

Primary

Key Stage 3: Maths, English,

History & Geography

Study skills & revision techniques

For information and to arrange a free  
meeting/consultation contact:

Anne-Marie McCubbin BA(Hons) PGCE  
email:

[info@wingstoflyeducation.co.uk](mailto:info@wingstoflyeducation.co.uk)

tel: 01223 811939

**Rothwell's  
Carpet Cleaning**

**Carpet Cleaning &  
Stone Floor, Upholstery, Rugs**

*A few points that make us stand out,*

Rothwell's has been in business since  
1993

We're an honest local family firm.  
Our large truck mounted machines  
mean more cleaning & drying power  
for the best results possible.

Members of both the NCCA and TACCA.

We will move the furniture.  
100% satisfaction or it's FREE.

*Call Oliver and Max Campbell for expert  
help today.*

**01223 832 928**

**[www.Rothwells.biz](http://www.Rothwells.biz)**

revived in 2019. A simple get-together on the recreation ground at a date on or around Midsummer (June 21st).

For the last 'Feast' it was a 'bring and share' food event. Drinks were provided and lots of games. As this mix was so successful, we will probably do the same again in 2023. This will also be the day we officially open the Multi-Use Games Court so some new games will be on the cards.

This year June 21st falls on a Saturday so once we fix the day, we will let you know, but it will either be Saturday the 21st or Sunday the 22nd June.

Again, if you would like to help on the day let our Clerk know.

### **Multi-Use Games Court - Little Wilbraham**

Now that the weather is changing for the better it's time to dust off the tennis racquet, put some air into the basketball or start talking to some netball enthusiasts.

The court is available to book for local residents at no cost so make sure you take advantage of this fabulous facility.

<https://www.wilbrahams.co.uk/information/multi-use-games-court/>

### **Other Parish Council news**

The parish council met on the 3rd January. Traffic officers from Cambridgeshire County council highways attended this meeting to discuss accidents that have happened both on the A1303 and the Little Wilbraham Road between the A1303 and Primrose Farm Road. The parish council will be working with them to promote road safety around our villages and there will be a week-long campaign sometime this year.

The parish council submitted a response to the planning application for the Six Oaks renewable energy park to both East Cambs District council and South Cambs District council. They also met with representatives from Ridge energy to discuss their plans. Of most discussion is the route that the cabling will take; this has not been decided and will not be until if and when the site gets planning permission. The PC will be working with Ridge to ensure that disruption to the villages is kept to a minimum.

The highway gate in Six Mile Bottom which was replaced and then shortly after destroyed by a car accident will be replaced again as soon as the weather improves.

### **Contact**

If you would like further information about any of the articles or would like to help out on any of the village initiatives, please contact the Parish Clerk. We would love to hear from you.

[clerklw@wilbrahams.co.uk](mailto:clerklw@wilbrahams.co.uk)

Albert') and is a dwarf variety growing to a height of 2.5 - 3 metres tall and 3 to 3 metres wide. It is a relatively slow-growing tree at about 30 cm per year so should be fully grown by 2033.

We have also planted another donated tree on the Church Green as a 'living memory' for a village resident. This will be great partner for 'Fat Albert' and will grow into a beautiful goblet-shaped lime (*Tilia Europaea Pallida*) in a few years.

Bulb 'bombing' continued again last year, and another 1000 bulbs were planted. This makes a total of over 4000 bulbs that have been planted so look out for a growing mass of colour in the spring.

And for the last addition, we will be planting another oak (*Quercus robur*) on the Recreation ground near the Multiuse Games Court. The idea is for a shady tree to sit under while keeping an eye on future generations playing on the court. The tree is another generous donation from the Cambridge District Council as part of their 'Free Tree' initiative.

### **A Coronation Celebration - May 6th 2023**

If you remember back to June 2022 we celebrated the Queens Platinum Jubilee with a Beacon, BBQ and Beer get together on the Church Green Little Wilbraham. With the passing of Queen Elizabeth, a new monarch will be crowned on May 6th 2023 in Westminster Abbey.

To start a weekend of celebration we will again be holding an evening event on the St John's Church Green on the 6th of May for the three villages, so reserve this in your calendar.

At this stage we are looking at some food, some drink, a beacon and some fireworks and possibly something for the children, but final details will be published closer to the date.

### **Application for Funds to Purchase Speed Signs**

The Parish Council has applied for funds from the Local Highways Initiative for two-speed displays also known as Mobile Vehicle Activated Signs (MVAS). As we have two villages separated by a few miles, we are seeking funds so we can help traffic calming in and around the villages while at the same time collecting information as part of the Parish Council's development of a traffic calming strategy for the parish. We are looking for some volunteers to help manage these devices so if you are interested or think you can help in any way, please contact the Parish Clerk.

### **The Feast**

Another date to set in your Calendar, 'The Feast' is back. As with a lot of recurring events, 'The Feast' was a casualty of the pandemic. Last held in 2019, 'The Feast' brings back a traditional village event that faded in 1915 and was

## **Wilbrahams' Memorial Hall**

Angle End, Gt Wilbraham  
[www.hall.gtwilbraham.net](http://www.hall.gtwilbraham.net)

We have all been through a very chilly winter, with eye-watering fuel bills to meet. We hope you have been using the hall – for one of the many interest groups and classes, or indeed for the popular 'Warm Hub mornings' run by The Wellbrahams. With the air source heat pump, the hall has been a warm and welcoming environment. If you would like to find out more about what is going on at the hall, why not look at our Calendar and Village Group page on our new website? For instance, new to the hall (and proving popular), are the Pilates classes run by Emma Gant (07812 766864 to book in). They take place at 9.30 am on Tuesdays and 6 pm on Wednesdays. A new term will start in mid-April - a great local opportunity to get fit and supple. As the hall is so popular, please think ahead: book any important events well in advance, and we will try and accommodate you.

### **Website**

Our new website has had lots of visits. We hope you like it. You can now sign up for news/event postings. Please visit [www.wilbrahamhall.co.uk](http://www.wilbrahamhall.co.uk), scroll to the bottom and fill in your email address. Please also send us news of items (fundraisers/group info etc.) that you would like posted, so this can reach the community.

### **Play Area**

Many thanks to everyone who responded to the recent Play Area Survey. 77 families completed it, and we were able to use the scores to feedback on our £4500 grant from FCC Communities Foundation. This really helps us prove community support and gives us a good basis from which to apply for grants in the future. The written feedback is also vital, and we will be looking at the suggestions that you have made.



### **Finances**

The new hall has been up and running for almost 7 years, and this last year we spent almost £10,000 of our reserve funds painting it. This is our community's asset, and it is important to maintain it well and keep it looking good over the years to come. On the other hand, we are keen to keep the rental rates affordable for all who use it. After the set back of the Pandemic, we have assessed our

income and have calculated we need to raise about £6,000-£7,000 per year over and above the rental income to break even and set aside something for repairs and maintenance. Over the last year, the Farmer's Markets raised ~£3600 and the Whist Drives organised by Shirley Morley donated another ~£1000. We are planning some more fundraising through the year to make up the total, but if you have any events or ideas that you would like to organise to raise funds for the hall, it would be much appreciated and will help to keep rental rates affordable.

## Events

Coronation of King Charles, weekend of 6th – 8th May 2023. – please see separate article from the Parish Councils (page 22). Wilbrahams' Memorial Hall will be hosting a concert on Monday 8th May, from 3 pm with music from the Tofties and the Community Choir on the Recreation Ground. There will be free teas/snacks and cakes and the Social Club bar will be open from 2 pm. Residents of Great & Little Wilbraham and Six Mile Bottom are all welcome.

The monthly Farmers' Markets are starting again on March 11th and will run on the 2nd Saturday of the month through to December from 9.30-11.30 am. Over the last year, lots of other local community markets have started up. We have been lucky that we started the market during lockdown, have built momentum, and have over 70 stalls on our list. We also have a loyal local customer base and are attracting visitors too. It is a great place to meet up with friends, shop locally and support small producers and crafts people, whilst also supporting the hall financially. So please keep supporting this - we have a reputation as a really friendly and vibrant market that we need to keep up! The Produce Stall will be run by the hall and various village charities throughout the year. A huge thanks should go to all those who bake and donate such wonderful produce, the stall is a vital part of the income raised. If you are involved in a village charity and would like to run the produce stall for the benefit of your charity this year, then please get in touch.

If you would like to book the hall or have any practical queries, please contact Shirley Morley (Booking Secretary)  
[booking.wilbrahamsmemorialhall@gmail.com](mailto:booking.wilbrahamsmemorialhall@gmail.com) If you have any comments or suggestions for things you would like to see at the hall, please contact me:  
[mail@emma-adams.co.uk](mailto:mail@emma-adams.co.uk)

Emma Adams, Chair of the Memorial Hall Committee

## Front Cover

The photo on the front cover is of a painting by Daniel Drury who lives in Dullingham. He never lived in the Wilbrahams, but had a cousin who lived in Great Wilbraham all his life so was often here. During one of his visits he sketched the painting and has just recently finished it.  
The back cover is a lovely local sunset by Chris Fell (Can you spot the yacht)

In mid-March, put a third of the compost in the bottom of the bucket, place the potato on top with the green shoots facing upwards, and then cover it with compost to half-fill the bucket. It's very important that you must keep the bucket away from frost at all times. As the green shoots come through, gradually fill the bucket with more compost, and keep it watered. When the bucket is full, stick four canes around the edge and loop some string around them; this will stop the potato foliage falling all over the place. Keep on watering the bucket, and if you have some, give your potato a couple of feeds of tomato fertilizer. And that's it unless you have muntjac deer close by; they are very partial to that soft green foliage.



Please have a go, and if you have children, get them to join in. You could even have a family competition; growing a potato in a bucket is fun even if the children fall out with their parents. Finally, do not use the lack of compost as an excuse; bring your bucket to me at 52 High Street, and I will send you down the garden to dig your own. Then, I'll see you at the weigh-in, and shall grit my teeth as I hand over the trophy. [And remember, if you don't win the cup, you will still have your own delicious early new potatoes for lunch.]

## Little Wilbraham and Six Mile Bottom Parish Council 'Fat Albert' is Planted



For those of you who walk the 'Wilbrahams Loop' through the Great Wilbrahams Common and past the Church Green, Little Wilbraham you may have noticed the addition of a new fir tree. Now known as 'Fat Albert' the tree was recently planted by the Parish Council.

Generously funded by the Little Wilbrahams Common Rights holders, we intend to use the tree as a village feature at Christmas and other festive occasions. The lights have been bought so we are looking forward to an inaugural 'switch on' on our May 6th Coronation celebration.

For those avid gardeners out there, the tree is a Colorado Blue Spruce (*Picea pungens* 'Fat



Please submit your photos electronically by midnight on Wednesday 12th, July (3 days before the Show) to: [vfpphotos@gmail.com](mailto:vfpphotos@gmail.com) so that the photos can be prepared for the external Judge to view and also for display on the large screen at the Show.

The Under 12's Classes 75-79 will be circulated by Great Wilbraham Primary School to their pupils after Easter and will also be listed in the paper Schedule in June. The seeds for Class 82 will be distributed to the pupils at the school in mid-April. (Seeds are available from Rosie White for children aged under 12 who live in the Wilbrahams or Six Mile Bottom but do not attend the school and who wish to enter the competition).

**HELP REQUIRED!** As was mentioned in the Autumn edition of the Warbler we are now going for a team approach to run the Show. Many thanks to those team members who have volunteered already but if you would like to help/be involved or have any other ideas for the Show please let me know. The aim is to meet around mid-March to discuss plans for the running of this year's Show. Date and time to be arranged.

**SOS!** We desperately need some new signs made for advertising the date and time of the Show which are placed at each entrance of Great Wilbraham so if you could help with this, we would be thrilled to hear from you!

For any other queries or information regarding the Show please contact me, Rosie White (details above).

In the meantime, happy gardening, planting, growing, flower-arranging, preserving, baking, crafting and photographing – we look forward to seeing you at the Hall with all your entries on Saturday, 15th July!

## SPUD IN A BUCKET

Much to my surprise, and to the greater surprise of my family, I won the 'Spud in a bucket' competition last year and have the Richard Wright Cup proudly on display. But I was made to promise to tell how I did it so, reluctant though I am to reveal my secret, here's the recipe.

First buy your 'official' potato from Rosie White or Trish Davis, and a bucket too if you don't have one. Together they will cost you all of £1.20 which is cheap for three months of entertainment, especially if you have children. Place the potato in the light on a windowsill to 'chit' until the middle of March.

Drill some holes in the bottom of the bucket for drainage. You are going to need soil or compost in which to grow the potato: you can go posh with bought compost, but I used garden compost. Soil is OK too although heavy to carry to the weigh-in. [My secret: I added a handful of blood, fish and bone to my garden compost, but don't tell.]

FULLY TRAINED, INSURED  
AND DBS CHECKED  
CAT SITTERS




In-home cat sitting based  
on your cat's individual needs, giving  
your feline companion safety, comfort and  
familiarity in their own surroundings.

[www.thefulbourncatsittingcompany.co.uk](http://www.thefulbourncatsittingcompany.co.uk)  
  @thefulbourncatsittingcompany  
[info@thefulbourncatsittingcompany.co.uk](mailto:info@thefulbourncatsittingcompany.co.uk)

## Emma's Pilates

Classes re-start on 11<sup>th</sup> and  
12<sup>th</sup> April for 6 weeks  
Memorial Hall, Great  
Wilbraham

New Saturday classes starting  
15<sup>th</sup> April  
Sports Hall, Fulbourn Centre

£10 drop in  
£50 for the full course paid in  
advance

[Emmagant8@gmail.com](mailto:Emmagant8@gmail.com)  
07812766864



## Gastro Quality Food In a Beautiful Setting

We are not just a pub with good food and drinks. We cater for all occasions including business meetings.

We now have beautifully decorated, comfortable, cosy guest bedrooms ready to make a fabulous night to remember with hearty breakfast cooked fresh to order.

Celebrate Mothers day With Us For Details Please Talk To Us.  
[www.holeinthewalldining.co.uk](http://www.holeinthewalldining.co.uk) [info@holeinthewalldining.co.uk](mailto:info@holeinthewalldining.co.uk)

Tel- 01223848616

## The Wilbrahams' Social Club

The Social Club is still a great place to spend an evening despite opening hours being restricted and at times unpredictable, owing to the lack of bar volunteers. Wednesday and Thursday evenings are well attended by table tennis, bridge club and choir members, and John regularly opens on Friday evenings from 6.30, Cheryl after home football games on Saturdays and often Alex on Saturday evenings. However, they can't do this every week! For the Six Nations



Rugby we plan to open for at least the England games on March 11th at 4.45 pm and March 18th at 5 pm. Watch

out for notices. The cricket season will be with us soon and our team are now in the Senior League Division 1. Let's hope the cricket afternoons will be as busy as last year and with the same beautiful weather. The cricketers and their many supporters can once again sit around the ground with a drink or two watching excellent cricket. and, of course, we will serve delicious cricket teas. The first home game is on Saturday May 6th we look forward to seeing you.



The Coffee Mornings are also a great opportunity to get together for a chat, to catch up with friends and taste the delicious cakes. Cheryl and Dru have taken a short break but will be raring to go again in March.

### Dates for your diary:

#### Coffee Mornings

Saturday March 18th 10.30 am

Saturday April 15th 10.30 am

Saturday May 20th 10.30 am

#### Current opening times:

Wednesdays 7 pm

Thursdays 8 pm

Fridays 6.30 pm

Saturdays If Football is at home from 3.30 pm, otherwise 6ish



the David Waters Memorial Cup (only the plug plants provided will be considered for this class).



\*\*The potato tubers are available now (1 per person and 20p for entry fee) and also a supply of 14 litre buckets (£1 each).

Please collect from either

Trish Davis at 13, Toft Lane, Great Wilbraham. Tel 01223 880854; mobile 07739415918; email [trishdavis@hotmail.com](mailto:trishdavis@hotmail.com) or

Rosie White at 13, High Street, Great Wilbraham. Tel 01223 881293; mobile 07757982934; email [rosiewhite77@hotmail.com](mailto:rosiewhite77@hotmail.com)

\*\*The plug plants will be available in early April (1 per person and 20p for entry fee).

When they are ready for collection there will be a notice in the window of Great Wilbraham Stores and on the Wilbrahams' website/Facebook page or please contact Rosie/Trish as above.

Please let us know if you need potatoes/plug plants delivered to you.

\*\*Don't forget, you are allowed 2 entries per person for all the other classes. Show rules apply and are as listed.

**PHOTOGRAPHY SECTION** – In order for you to have more time to take your photos, the classes have been set earlier than usual by Andrew Evans (previous multi-winner of this Section) and who will therefore not be entering his photos this year.....so, you may be in with a chance of winning the Cup! Please see his guidelines for each of the Class subjects below:

Class 70: "A Wheel or Wheels" e.g. a car, a waterwheel, a bike.

Class 71: "The Seasons" - something that captures the essence of one of the four seasons.

Class 72: "History" or "Vintage" e.g. a historical building, a re-enactment or a photograph of something retro/vintage.

Class 73: "Food" - images of ingredients, produce, fancy dinner.

Class 74: "A Reflection" e.g. a tree reflected in a canal or something sat on a mirror.

## The Wilbrahams and Six Mile Bottom Vegetable, Flower and Produce Show 2023

The date for this year's Show is SATURDAY 15th JULY and will be held in the Memorial Hall, Great Wilbraham.

Hopefully, there will still be lots of produce and perennials to enter this year as there have been many sad tales of woe from local gardeners due to the destruction of their hardiest of plants and winter crops in the December's "big freeze".... so disheartening after all the effort of planting and growing. However, it is now great to see signs of Spring with the bulbs shooting up and the first daffodils coming into bloom. It is amazing how resilient Nature is!



PLEASE NOTE: We are making a few changes to the timings of the Show this year. The times for receiving Entries at the Hall will be 09.00 -11.00 (not the usual 11.30) and the opening time for the Show in the afternoon will be 14.30 (instead of 15.00). Prize giving will be at 15.45 followed by the Auction of donated exhibits at 16.00 and then the Raffle. This will hopefully give younger families the chance to get home in time for tea and also to help us get the Hall cleared up before the start of the evening whist drive.

In order for you to plan your entries for the Show in advance, we are, as usual, publishing a list of the Classes in this Spring edition of the Warbler. A more comprehensive paper copy of the Schedule and entry forms will be delivered to you in early June with the Summer edition of the Warbler. Have a good look through and see what you could do. . . you never know – you might be awarded a cup or two – there are 12 to be won.

Just a few things to mention:

The popular "SPUD IN THE BUCKET" competition is running again (Class 22). For those of you who are not familiar with this, you are provided with a potato tuber to be planted in a 14litre/3-gallon bucket and then bring the whole bucket intact to 13, High Street, Great Wilbraham by Wednesday 12th July where the bucket will be emptied, and the potatoes weighed. The heaviest crop of potatoes produced from one tuber will be the winner of The Richard Wright Cup.

Please see David Richer's article on his success story of winning the Spud in the Bucket Competition last year!

We are also running the "PLUG-PLANT COMPETITION"(Class 41). The idea is that you nurture a plug-plant which is provided and then enter it into the Show. This year it will be a begonia, and the winner of the 'best' plant will be awarded

If Cricket is at home from 1 pm, otherwise Gish You can check the Community Facebook page for any changes. As always, we would welcome new bar staff and new committee members to bring ideas, enthusiasm and help with the routine management of the club. We look forward to seeing you soon.

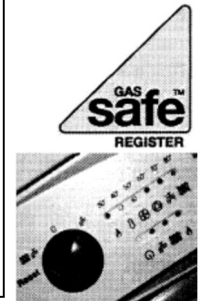
The Social Club Committee

### Wilbraham Boiler Services

Plumbing and Heating  
Gas and Oil Servicing and Breakdown  
Boiler Replacements – Landlord Certificates  
General Plumber and Heating  
30 years experience – No jobs too Small

**Mark Taylor**

**Call Now : 01223 812024 or 07906 691726**



## PETER FISHER

### CARPETS - WOODS - VINYLs

A wide range of floorings supplied and fitted.  
Please call for a free estimate and select in your home.

Tel: (Bottisham) **01223 811321**  
Mobile: **07879 494 685**

Great service for  
**30** years



## NOTICE BOARD

### DATES FOR SPRING 2023

Monday 3<sup>rd</sup> April – Friday 14<sup>th</sup> April – Easter holidays  
 Monday 17<sup>th</sup> April – School opens  
 Monday 1<sup>st</sup> May – Bank Holiday  
 Saturday – Monday 6 – 8 May  
 Coronation activities  
 Thursday 25<sup>th</sup> May – School closes  
 Friday 26<sup>th</sup> May – INSET  
 Monday 29<sup>th</sup> May – Friday 2<sup>nd</sup> June – half term

### Mobile Library Timetable

The mobile library schedule is every 4<sup>th</sup> Thursday :-

23 March, 27 April, 25 May

#### Six Mile Bottom,

Delaware Close, 09.35-10.00.

#### Little Wilbraham

Bus stop on High Street, 4.10-4.25

#### Great Wilbraham

Opposite the playground, 4.30-5.00.

### Wilbrahams Memorial Hall

Regular monthly Farmers' Markets are held on the second Saturday of the month from 9.30-11.30 am

Next Market Saturday 11 March

### BIN COLLECTIONS

#### Black bins

Monday 6 March  
 Monday 20 March  
 Monday 3 April  
 Tuesday 18 April  
 Tuesday 2 May  
 Monday 15 May  
 Monday 29 May

#### Blue /Green bins

Monday 13 March  
 Monday 27 March  
 Wednesday 12 April  
 Monday 24 April  
 Monday 8 May  
 Monday 22 May

### Deadline for the Summer Issue

**Friday 12th May 2023**

Email contributions or adverts to;

**[martin@gienke.net](mailto:martin@gienke.net)**

**[johnboy\\_torode@hotmail.com](mailto:johnboy_torode@hotmail.com)**

Hand-written or typed contributions can be handed in or posted to the editors.

## Community Group Contact Details

Great Wilbraham Common Rights

Steve Bartlett 881096  
[stephen.bartlett@mindworks.ltd.uk](mailto:stephen.bartlett@mindworks.ltd.uk)

Great Wilbraham Guild of Change Ringers

Peter Sims  
[ptrs28@googlemail.com](mailto:ptrs28@googlemail.com)

Great Wilbraham Primary School  
 GW Primary School PTFA

Office: 880408  
 Emily Oliver  
[emilystar\\_uk@yahoo.com](mailto:emilystar_uk@yahoo.com)  
 Chris Gurney

Oil Syndicate, Great Wilbraham

[webadmin@oil-club.co.uk](mailto:webadmin@oil-club.co.uk)

Over 60's

Carol Whitehouse  
[Carolwhitehouse4@gmail.com](mailto:Carolwhitehouse4@gmail.com)

Transport Woking Group

Tim Page 881738

Volunteer Group  
 The Well-brahams

David Richer 880547  
[hgvs.wilbrahams@gmail.com](mailto:hgvs.wilbrahams@gmail.com)  
 Pat Simpson pas49@cam.ac.uk  
[www.thewell-rahams.weebly.com](http://www.thewell-rahams.weebly.com)  
[well.brahams@gmail.com](mailto:well.brahams@gmail.com)

Weenie Warblers Mother & Toddler Group  
 Wilbrahams' Bridge Club

Sarah Fordham, 880698  
 Di Raikes, 881065  
[raikswilb@btinternet.com](mailto:raikswilb@btinternet.com)

Wilbrahams' Community Choir

Tony Goryn 07751281341  
[tonygoryn@icloud.com](mailto:tonygoryn@icloud.com)  
 Gill Humphrey 811436

Wilbraham' Gardening Club

Jackie Beadsmoore, 880889  
[jackiebeadsmoore@icloud.com](mailto:jackiebeadsmoore@icloud.com)

Wilbrahams' Memorial Hall

Shirley Morley, 880723  
[booking.wilbrahamsmemorialhall@gmail.com](mailto:booking.wilbrahamsmemorialhall@gmail.com)

Wilbrahams' Scrabble

Julia Cornwell, 881751  
[juliacornwell@gmail.com](mailto:juliacornwell@gmail.com)

Wilbrahams' Sports Club

Roddy Tippen 880728

### LW&SMB Parish Council

Next meeting date

**14 March**

**2 May**

### GW Parish Council

Next meeting dates

16th March

The annual Parish meeting is the 30th March

***But did you know you can also buy clothing, footwear, and gifts of all kinds***



ernest/DOE



- DIY repairs and odd jobs
- Painting & Decorating
- Tiling, Flooring & Patios
- Gardening, Landscaping, Fencing & Decking
- Kitchen & Bathroom installation
- Brickwork, Dry Walling and Small Builds
- Carpentry and Plumbing
- Window and Gutter cleaning
- Jet wash and Patio cleaning
- Rubbish clearance and Tip runs
- Carpet cleaning and Wood Floor staining
- New doors or locks
- TV and Audio Installations
- Security and Garden lighting
- **No job is too Small or too Big!**

Free no obligation quotes and advice provided  
Your very local Handyman from Great Wilbraham



07500876376 or 01223 881700

Email: [info@myvillagehandyman.com](mailto:info@myvillagehandyman.com) | [www.myvillagehandyman.com](http://www.myvillagehandyman.com)

The Hall will be open for receiving entries on **Saturday 15<sup>th</sup> July** from 9.00 am to 11.00 am. No exhibits will be accepted after 11.00 am and all exhibitors **MUST** leave the Hall by 11.15 am. **NOTE – EARLIER TIMES!**

**Exhibitor's entrance fee: 20p per item (adults) & 10p per item (Under-16s)**

### **Vegetables**

1. 5 pods of broad beans
2. 5 pods of peas or mangetout
3. A bunch of 5 radishes (one variety)
4. 1 lettuce, root intact (any variety)
5. 3 potatoes (same variety)
6. 5 salad onions with tops on
7. 1 cucumber (any variety)
8. 3 carrots, tops trimmed
9. 5 French or dwarf beans
10. 3 bulbs of garlic
11. 3 beetroot, tops trimmed
12. 2 courgettes (4-8"/10-20cm)
13. 4 tomatoes with stalk (same type)
14. 5 shallots
15. 5 runner beans
16. 3 onions, tops trimmed and tied
17. The heaviest marrow!
18. 1 cabbage with 2-3"/5-7.5cm stem
19. Tray, trug or basket of mixed vegetables, at least 5 different varieties
20. 3 varieties of herbs (3 stems of each)
21. Exhibit of any vegetable not included in the schedule
22. 'Spud in a Bucket' Competition (see *Warbler for details*)

### **Fruit**

23. 7 raspberries
24. 5 strings of blackcurrants
25. 5 strings of redcurrants
26. 7 gooseberries
27. 3 sticks of rhubarb
28. Exhibit of any fruit not included in the schedule
29. Longest stick of rhubarb

### **Flowers**

30. A specimen rose (Rose Bowl Award)
31. 5 stems of garden flowers – each different
32. 3 stems of roses, large flowered
33. 5 stems of sweet peas, single colour or mixed
34. 3 stems of cluster-flowered roses
35. 3 stems of flowering shrub (mixed or the same)
36. 3 stems of herbaceous perennial (mixed or the same)
37. 3 stems of foliage plant (mixed or the same)
38. 1 dahlia bloom (any variety, any size)
39. A rose – chosen for scent
40. 3 stems of dahlias (mixed or the same, any size)
41. 'Plug Plant' Competition (see *Warbler for details*) (David Waters Memorial Cup)

\* *Classes 42-45: See note in 'Rules' section*

42. A flowering pot plant
43. A foliage pot plant
44. Cactus/cacti or succulent(s) in any container

45. Single outdoor plant in a pot

### **Flower Exhibits (Arrangements)**

\* *See note in 'Rules' section*

46. "The Crown Jewels" an exhibit of flowers and foliage (accessories allowed)
47. A miniature arrangement (max overall size 4"/10cm)

48. A "butterfly/bee friendly" arrangement of flowers and foliage in a jug/pitcher (any size)
49. A floral exhibit in a fruit or vegetable
50. A petite arrangement (overall max size 9"/23cm)

### **Produce**

\* *See note in 'Rules' section*

51. 6 hen or 6 bantam eggs
52. 1 jar of jam or jelly (any variety)
53. 1 jar of marmalade (any variety)
54. 1 jar of savoury preserve
55. 1 loaf of bread or 4 bread rolls (any type)
56. 4 King Charles III Coronation Cup Cakes
57. 4 chocolate brownies
58. 4 cookies
59. Victoria sandwich
60. Recipe to follow
61. Recipe to follow

### **Arts and Handicrafts**

\* *See note in 'Rules' section*

62. A drawing or painting (any medium)
63. An item of patchwork or quilting
64. Any sewn/stitched item
65. An item of knitting
66. An item of crochet, lace, knotwork or beadwork
67. An item of tapestry, cross stitch or needlepoint
68. An item of hard handicraft (e.g. woodwork, pottery, metalwork)
69. Any other craft item not included in the schedule

### **Photography**

\* *See note in 'Rules' section and guidelines in attached article*

70. "A Wheel or Wheels"
71. "The Seasons"
72. "History" or "Vintage"

73. "Food"

74. "A Reflection"

### **Children's Under 12's section**

Classes 75 (Under 5's) to 79 to follow in printed schedule.

80. A picture using dried/pressed flowers and leaves
81. A Lego/Knex/Mobilo model
82. Grow a plant from seed (provided by Rosie White)
83. Bake and decorate 3 Cup Cakes "Fit for a King"

### **RULES**

Number of entries in each class limited to two per exhibitor (except Classes 22 and 41 which are limited to one per exhibitor).

If there is only one entry in a class, the prize will be left to the judges' discretion. The judges may withhold awards if, in their opinion, exhibits do not reach reasonable standards.

Please read and interpret the meaning of the schedule to avoid disappointment or disqualification. The judges' decision is final.

### **Notes:**

All exhibitors are on trust that their entries are **MADE BY THEMSELVES OR GROWN IN THEIR OWN GARDEN IN THE WILBRAHAMS OR SIX MILE BOTTOM, except classes 42-50.**

Classes 42-45 must have been owned by the Exhibitor for at least 8 weeks.

Classes 55-61 are to be exhibited on a white paper plate and covered with transparent film or a polythene bag.

Classes 62-69 must be Exhibitor's own work and not previously shown.

Classes 70-74 to be sent electronically by email to [yfpphotos@gmail.com](mailto:yfpphotos@gmail.com) – deadline midnight Wednesday 12<sup>th</sup> (3 days before the Show) – to be displayed at the Show on screen.